



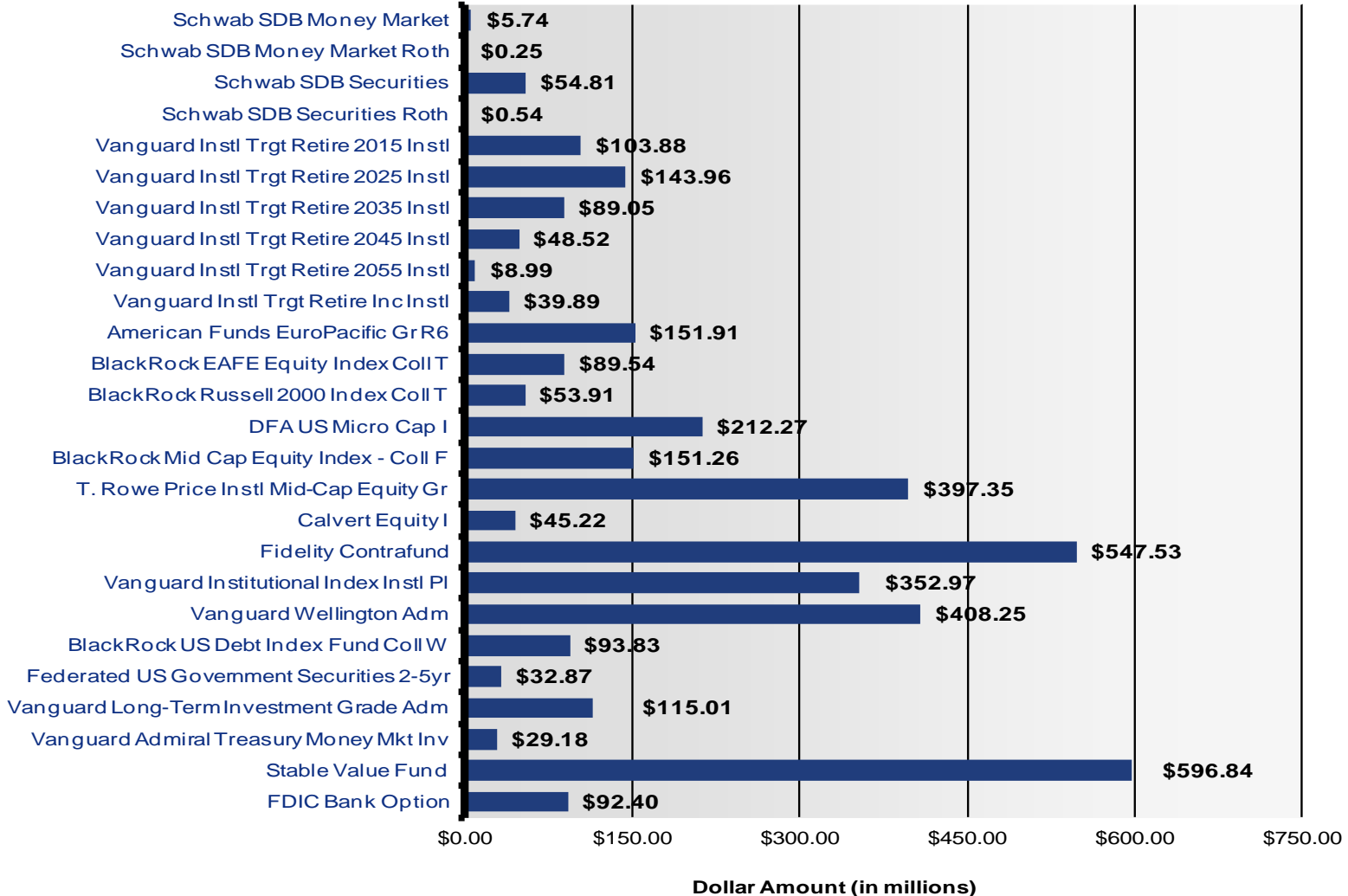
Quarterly Plan Review

For the Period From July 1, 2015 to September 30, 2015

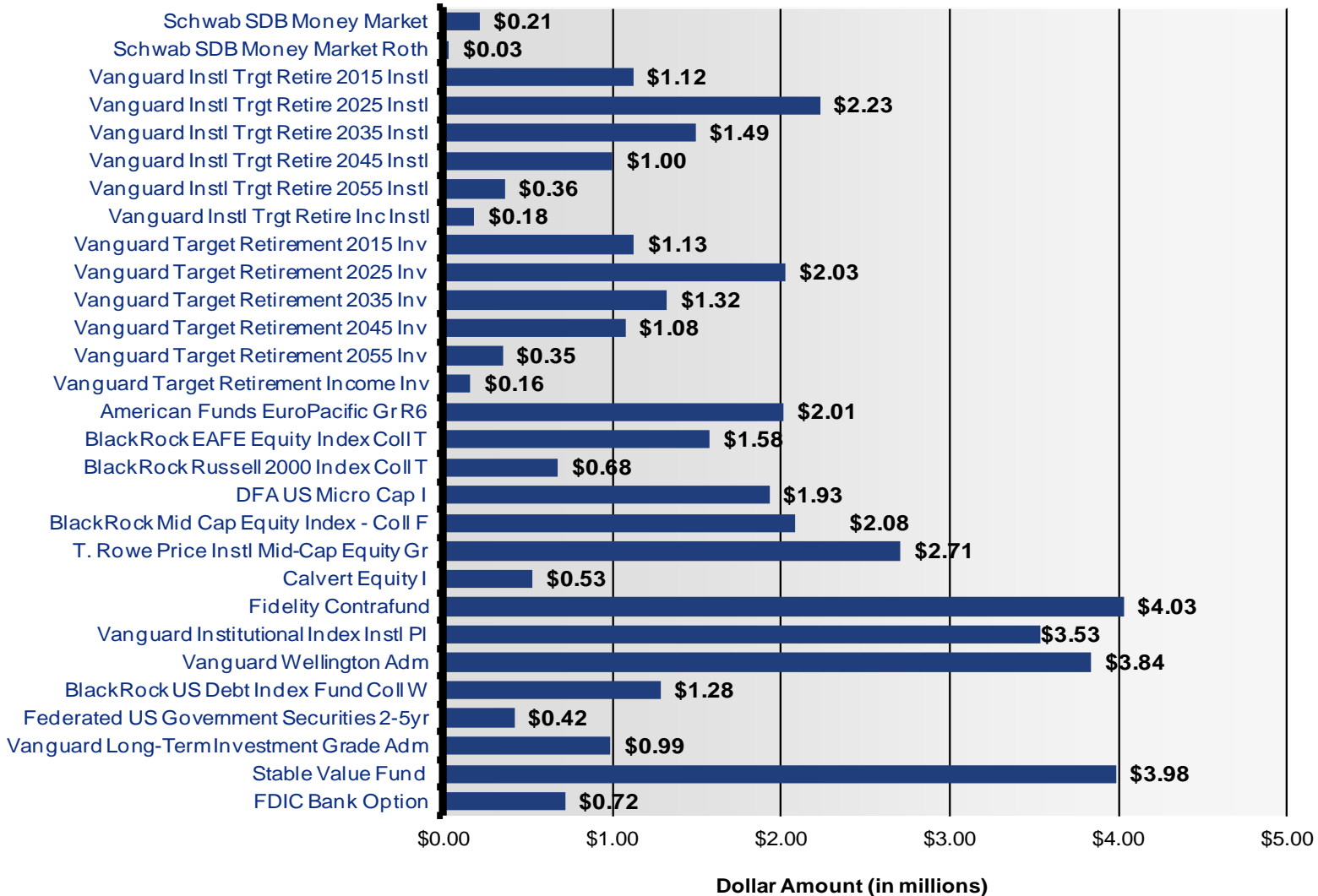
WDC Assets – All Participants

Asset Class/Fund Name	9/30/2015		
	Amount	Pct	Accts
Self-Directed			
Schw ab SDB Money Market	5,742,133	0.1%	574
Schw ab SDB Money Market Roth	248,061	0.0%	33
Schw ab SDB Securities	54,809,655	1.4%	664
Schw ab SDB Securities Roth	538,123	0.0%	34
	61,337,972	1.6%	
Fund of Funds			
Vanguard Instl Trgt Retire 2015 Instl	103,877,819	2.7%	2,917
Vanguard Instl Trgt Retire 2025 Instl	143,959,344	3.7%	5,877
Vanguard Instl Trgt Retire 2035 Instl	89,046,715	2.3%	5,615
Vanguard Instl Trgt Retire 2045 Instl	48,516,282	1.3%	4,988
Vanguard Instl Trgt Retire 2055 Instl	8,991,295	0.2%	1,891
Vanguard Instl Trgt Retire Inc Instl	39,888,554	1.0%	1,254
	434,280,009	11.2%	
International			
American Funds EuroPacific Gr R6	151,909,600	3.9%	19,888
BlackRock EAFE Equity Index Coll T	89,543,571	2.3%	14,418
	241,453,171	6.2%	
Small-Cap			
BlackRock Russell 2000 Index Coll T	53,910,715	1.4%	5,013
DFA US Micro Cap I	212,265,800	5.5%	22,376
	266,176,515	6.9%	
Mid-Cap			
BlackRock Mid Cap Equity Index - Coll F	151,259,006	3.9%	16,379
T. Rowe Price Instl Mid-Cap Equity Gr	397,346,494	10.3%	18,074
	548,605,500	14.2%	
Large-Cap			
Calvert Equity I	45,217,933	1.2%	3,191
Fidelity Contrafund	547,528,435	14.2%	25,853
Vanguard Institutional Index Instl Pl	352,965,872	9.1%	22,508
Vanguard Wellington Adm	408,254,403	10.6%	21,213
	1,353,966,643	35.0%	
Bond			
BlackRock US Debt Index Fund Coll W	93,825,903	2.4%	12,028
Federated US Government Securities 2-5yr	32,872,788	0.9%	6,476
Vanguard Long-Term Investment Grade Adm	115,008,283	3.0%	11,333
	241,706,974	6.3%	
Money Market			
Vanguard Admiral Treasury Money Mkt Inv	29,176,847	0.8%	7,230
	29,176,847	0.8%	
Fixed			
Stable Value Fund	596,844,401	15.4%	20,503
FDIC Bank Option	92,399,636	2.4%	4,687
	689,244,037	17.8%	
	3,865,947,668	100.0%	

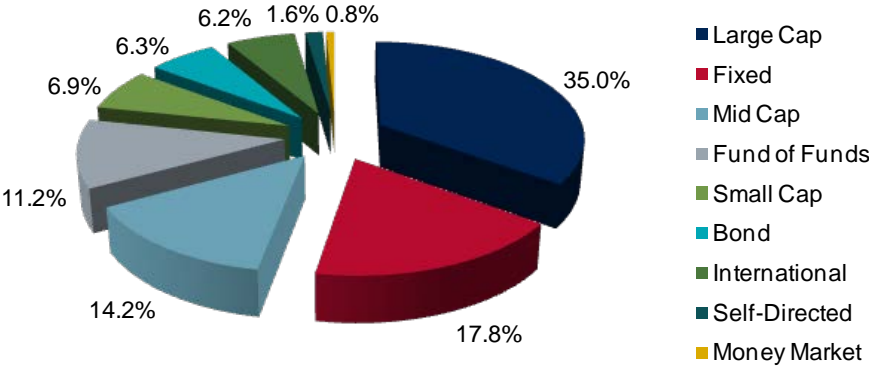
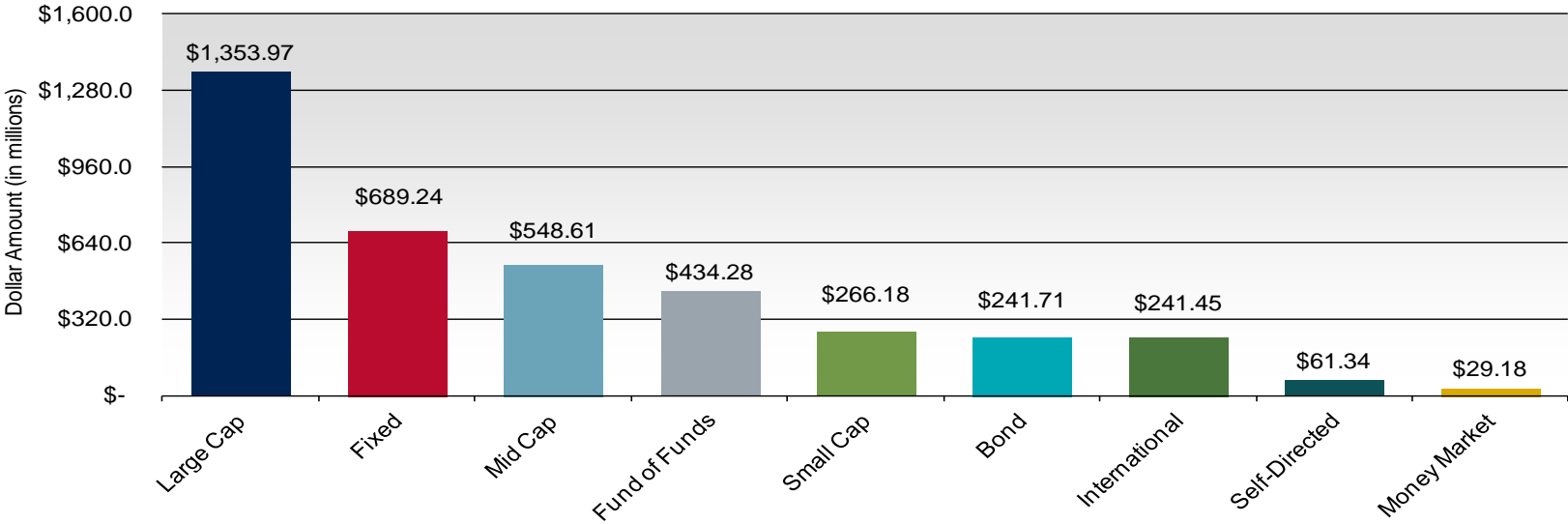
WDC Assets – All Participants



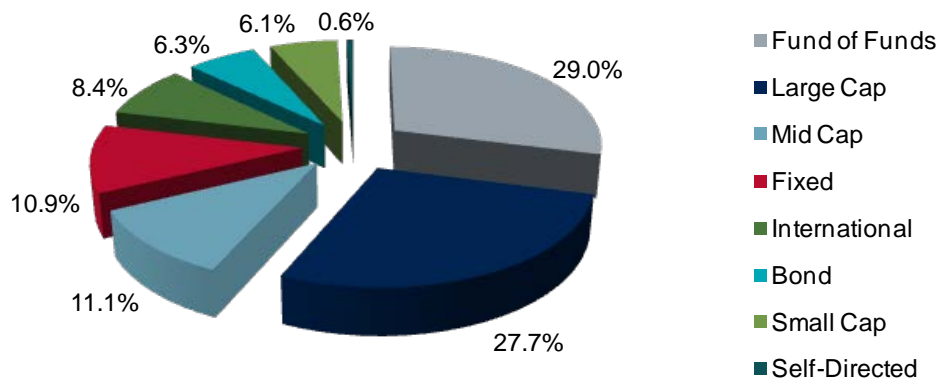
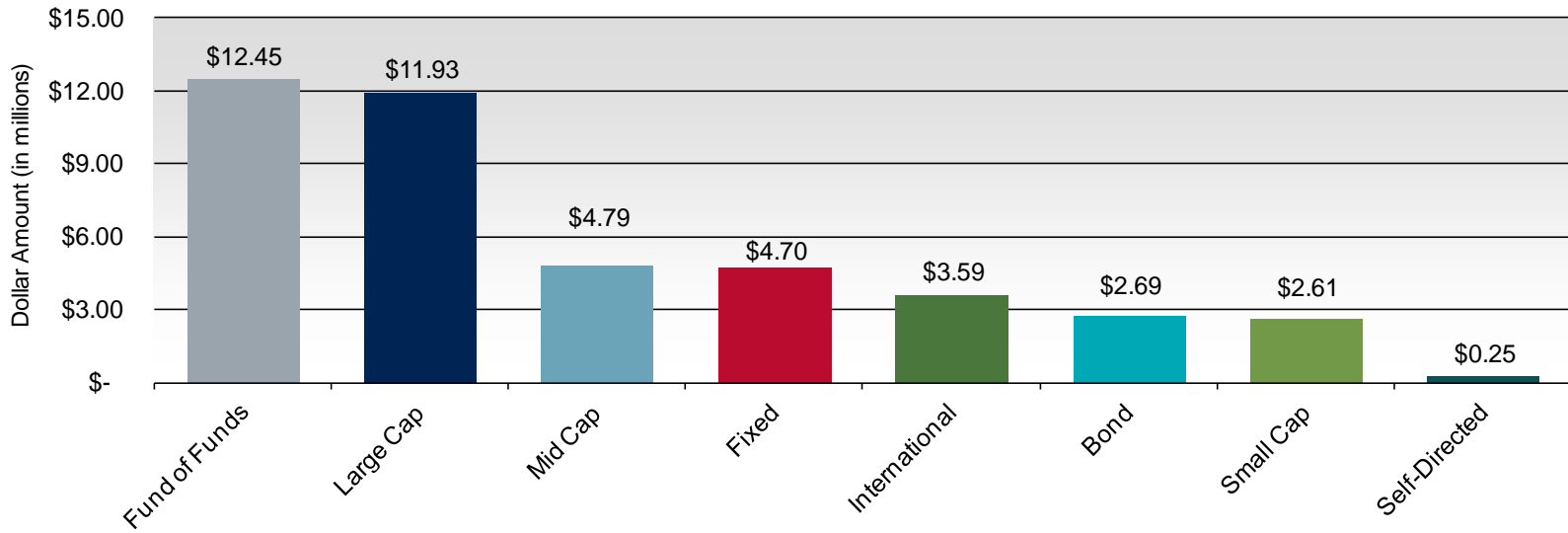
Contributions – All WDC Participants



Assets by Asset Class – All Participants



Contributions by Asset Class – All Participants



Assets – State Participants

Asset Class/Fund Name	9/30/2015		
	Amount	Pct	Accts
Self-Directed			
Schw ab SDB Money Market	4,099,348	0.2%	399
Schw ab SDB Money Market Roth	234,810	0.0%	23
Schw ab SDB Securities	41,102,593	1.5%	458
Schw ab SDB Securities Roth	483,789	0.0%	23
	45,920,539	1.7%	
Fund of Funds			
Vanguard Instl Trgt Retire 2015 Instl	68,204,786	2.6%	1,807
Vanguard Instl Trgt Retire 2025 Instl	87,533,809	3.3%	3,464
Vanguard Instl Trgt Retire 2035 Instl	49,426,800	1.9%	3,194
Vanguard Instl Trgt Retire 2045 Instl	29,779,356	1.1%	3,063
Vanguard Instl Trgt Retire 2055 Instl	6,259,568	0.2%	1,217
Vanguard Instl Trgt Retire Inc Instl	28,394,441	1.1%	749
	269,598,759	10.2%	
International			
American Funds EuroPacific Gr R6	103,075,608	3.9%	11,348
BlackRock EAFE Equity Index Coll T	57,208,773	2.2%	8,154
	160,284,381	6.0%	
Small-Cap			
BlackRock Russell 2000 Index Coll T	36,552,153	1.4%	3,004
DFA US Micro Cap I	144,403,177	5.4%	12,771
	180,955,330	6.8%	
Mid-Cap			
BlackRock Mid Cap Equity Index - Coll F	100,063,366	3.8%	9,260
T. Rowe Price Instl Mid-Cap Equity Gr	273,088,183	10.3%	10,941
	373,151,549	14.1%	
Large-Cap			
Calvert Equity I	33,282,389	1.3%	2,089
Fidelity Contrafund	382,928,808	14.4%	15,328
Vanguard Institutional Index Instl Pl	252,454,980	9.5%	13,264
Vanguard Wellington Adm	277,148,059	10.4%	12,350
	945,814,237	35.6%	
Bond			
BlackRock US Debt Index Fund Coll W	57,483,100	2.2%	6,595
Federated US Government Securities 2-5yr	23,747,342	0.9%	3,879
Vanguard Long-Term Investment Grade Adm	84,779,802	3.2%	7,181
	166,010,245	6.3%	
Money Market			
Vanguard Admiral Treasury Money Mkt Inv	21,725,033	0.8%	4,599
	21,725,033	0.8%	
Fixed			
Stable Value Fund	422,605,154	15.9%	12,147
FDIC Bank Option	68,081,803	2.6%	2,902
	490,686,958	18.5%	
	2,654,147,032	100.0%	

Assets – Local Participants

Asset Class/Fund Name	9/30/2015		
	Amount	Pct	Accts
Self-Directed			
Schw ab SDB Money Market	1,642,785	0.1%	175
Schw ab SDB Money Market Roth	13,252	0.0%	10
Schw ab SDB Securities	13,707,062	1.1%	206
Schw ab SDB Securities Roth	54,334	0.0%	11
	15,417,433	1.3%	
Fund of Funds			
Vanguard Instl Trgt Retire 2015 Instl	35,673,034	2.9%	1,110
Vanguard Instl Trgt Retire 2025 Instl	56,425,535	4.7%	2,413
Vanguard Instl Trgt Retire 2035 Instl	39,619,915	3.3%	2,421
Vanguard Instl Trgt Retire 2045 Instl	18,736,926	1.5%	1,925
Vanguard Instl Trgt Retire 2055 Instl	2,731,727	0.2%	674
Vanguard Instl Trgt Retire Inc Instl	11,494,113	0.9%	505
	164,681,249	13.6%	
International			
American Funds EuroPacific Gr R6	48,833,992	4.0%	8,540
BlackRock EA FE Equity Index Coll T	32,334,798	2.7%	6,264
	81,168,790	6.7%	
Small-Cap			
BlackRock Russell 2000 Index Coll T	17,358,563	1.4%	2,009
DFA US Micro Cap I	67,862,622	5.6%	9,605
	85,221,185	7.0%	
Mid-Cap			
BlackRock Mid Cap Equity Index - Coll F	51,195,640	4.2%	7,119
T. Row e Price Instl Mid-Cap Equity Gr	124,258,311	10.3%	7,133
	175,453,950	14.5%	
Large-Cap			
Calvert Equity I	11,935,544	1.0%	1,102
Fidelity Contrafund	164,599,627	13.6%	10,525
Vanguard Institutional Index Instl Pl	100,510,891	8.3%	9,244
Vanguard Wellington Adm	131,106,344	10.8%	8,863
	408,152,406	33.7%	
Bond			
BlackRock US Debt Index Fund Coll W	36,342,803	3.0%	5,433
Federated US Government Securities 2-5yr	9,125,446	0.8%	2,597
Vanguard Long-Term Investment Grade Adm	30,228,481	2.5%	4,152
	75,696,730	6.2%	
Money Market			
Vanguard Admiral Treasury Money Mkt Inv	7,451,813	0.6%	2,631
	7,451,813	0.6%	
Fixed			
Stable Value Fund	174,239,247	14.4%	8,356
FDIC Bank Option	24,317,833	2.0%	1,785
	198,557,080	16.4%	
	1,211,800,636	100.0%	

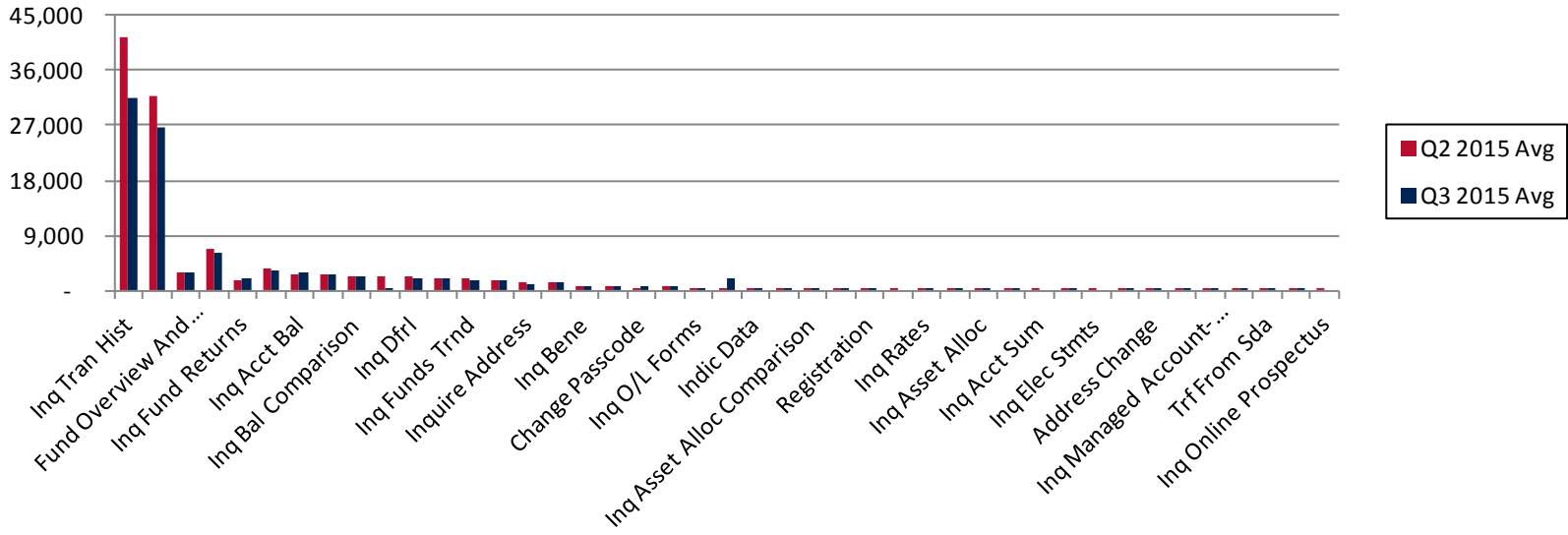
WDC Participation Statistics

	State	Local	Total
Participants 7/1/2015	34,243	23,256	57,499
New Enrollments 7/01/2015 - 9/30/2015	615	393	1,008
Withdrawals			
Service Separation			
<i>Full</i>	184	115	299
<i>Partial</i>	240	121	361
Periodic Payments	1,430	644	2,074
Hardship			
<i>Full</i>	0	0	0
<i>Partial</i>	27	9	36
DeMinimis			
<i>Full</i>	0	1	1
<i>Partial</i>	0	0	0
Final Withdrawals			
<i>Rollovers out of the WDC</i>	1	9	10
<i>Final Withdrawals</i>	98	65	163
Participants 9/30/2015	34,601	23,449	58,050

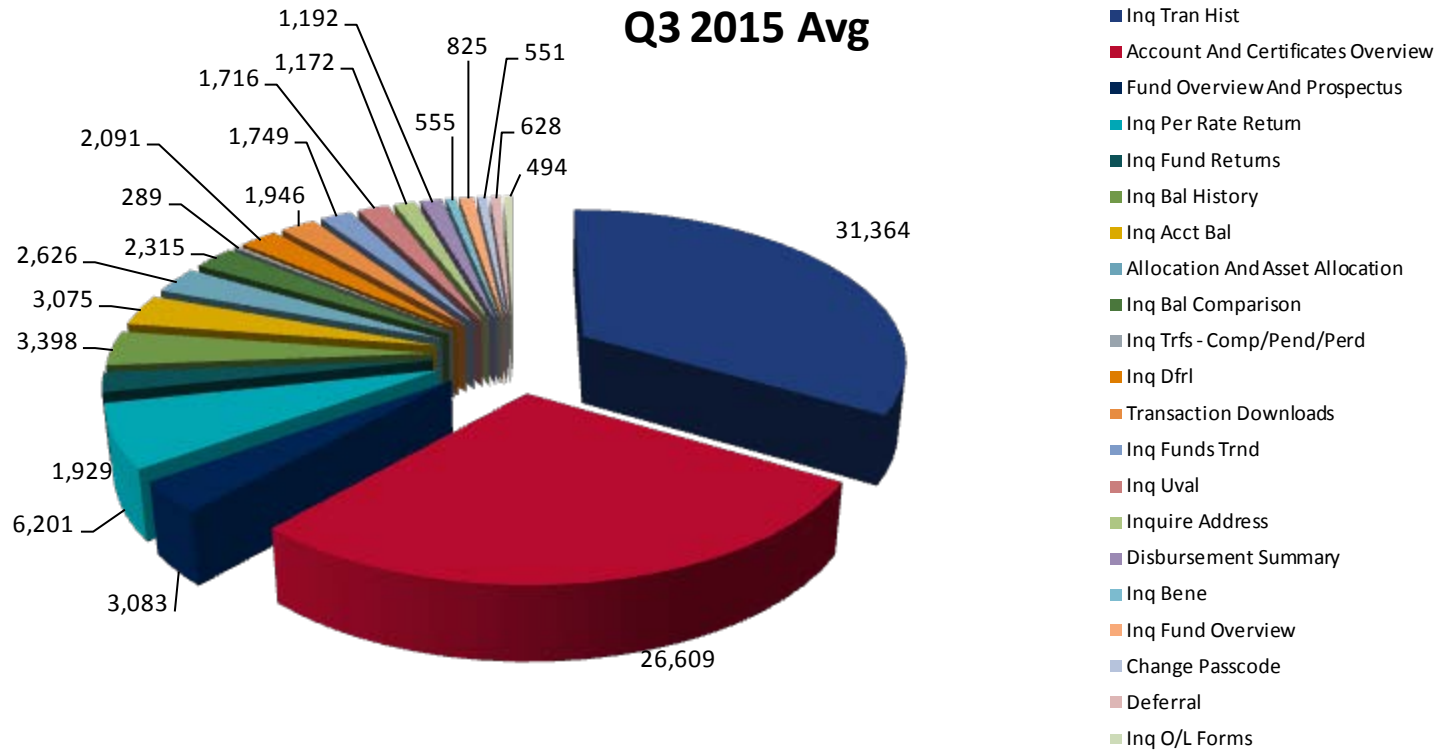
Web Activity

Category	Plan Totals			
	4/2/2015 to 7/1/2015		7/1/2015 to 9/30/2015	
	Avg	Pct	Avg	Pct
Inq Tran Hist	41,511	35.8%	31,364	31.6%
Account And Certificates Overview	31,686	27.3%	26,609	26.8%
Fund Overview And Prospectus	2,955	2.5%	3,083	3.1%
Inq Per Rate Return	6,738	5.8%	6,201	6.3%
Inq Fund Returns	1,820	1.6%	1,929	1.9%
Inq Bal History	3,451	3.0%	3,398	3.4%
Inq Acct Bal	2,737	2.4%	3,075	3.1%
Allocation And Asset Allocation	2,500	2.2%	2,626	2.6%
Inq Bal Comparison	2,349	2.0%	2,315	2.3%
Inq Trfs - Comp/Pend/Perd	2,384	2.1%	289	0.3%
Inq Dfrl	2,434	2.1%	2,091	2.1%
Transaction Downloads	1,927	1.7%	1,946	2.0%
Inq Funds Trnd	1,842	1.6%	1,749	1.8%
Inq Uval	1,807	1.6%	1,716	1.7%
Inquire Address	1,247	1.1%	1,172	1.2%
Disbursement Summary	1,367	1.2%	1,192	1.2%
Inq Bene	679	0.6%	555	0.6%
Inq Fund Overview	826	0.7%	825	0.8%
Change Passcode	511	0.4%	551	0.6%
Deferral	637	0.5%	628	0.6%
Inq O/L Forms	514	0.4%	494	0.5%
Email Address	441	0.4%	2,147	2.2%
Indic Data	405	0.3%	467	0.5%
Fund To Fund Trf	407	0.4%	452	0.5%
Inq Asset Alloc Comparison	297	0.3%	257	0.3%
Inq Fund Prospectus	285	0.2%	258	0.3%
Registration	317	0.3%	298	0.3%
Inq Stmt On Demand	200	0.2%	-	0.0%
Inq Rates	237	0.2%	229	0.2%
Allocation	242	0.2%	245	0.2%
Inq Asset Alloc	169	0.1%	173	0.2%
Elec Filing Cabinet	410	0.4%	340	0.3%
Inq Acct Sum	115	0.1%	-	0.0%
Beneficiaries	132	0.1%	102	0.1%
Inq Elec Stmt	55	0.0%	-	0.0%
Rebalancer	103	0.1%	95	0.1%
Address Change	124	0.1%	95	0.1%
Order Passcode	67	0.1%	70	0.1%
Inq Managed Account-Ibbotson	138	0.1%	100	0.1%
Trf To Sda	20	0.0%	20	0.0%
Trf From Sda	10	0.0%	11	0.0%
Inq Alloc	1	0.0%	2	0.0%
Inq Online Prospectus	1	0.0%	-	0.0%
GRAND TOTAL	116,098	100.0%	99,169	100.0%
Avg Distinct Visitors Per Month	8,029		7,914	
Avg Number of Successful Logins Per Month	58,566		51,162	
Average # of Logins per Visitor	7.3		6.5	

Web Activity - Continued



Web Activity - Continued



KeyTalk (IVR) Activity

Category	Plan Totals			
	4/2/2015 to 7/1/2015		7/1/2015 to 9/30/2015	
	Avg	Pct	Avg	Pct
Change Passcode	725	77.1%	672	77.1%
Inq Acct Bal	146	15.5%	137	15.7%
Deferral	60	6.4%	41	4.7%
Inq Tran Hist	3	0.3%	5	0.6%
Inq Alloc	3	0.3%	4	0.5%
Inq Uval	-	0.0%	6	0.7%
Req Stmt	1	0.1%	2	0.2%
Allocation	1	0.1%	1	0.1%
Fund To Fund Trf	1	0.1%	3	0.3%
Inq Rates	-	0.0%	1	0.1%
GRAND TOTAL	940	100.0%	872	100.0%

Avg Unique Callers Per Month

1,326

1,246

Avg Total Calls Per Month

2,494

2,322

Avg Rolled to Customer Service Per Month

1,315

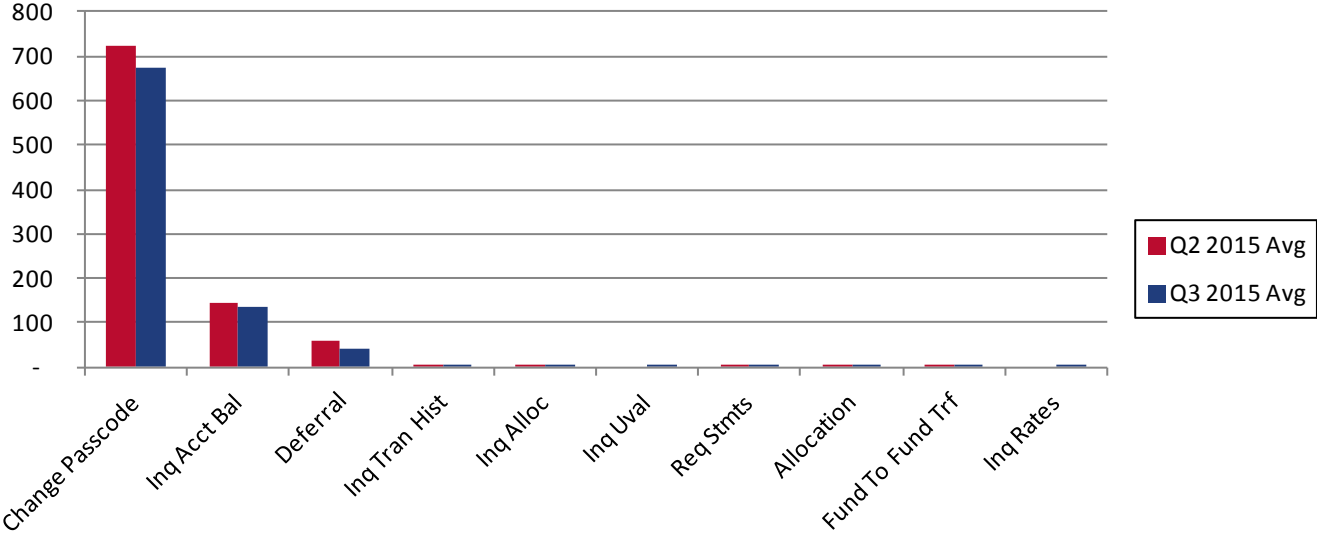
1,261

Pct Transferred to CSR

52.7%

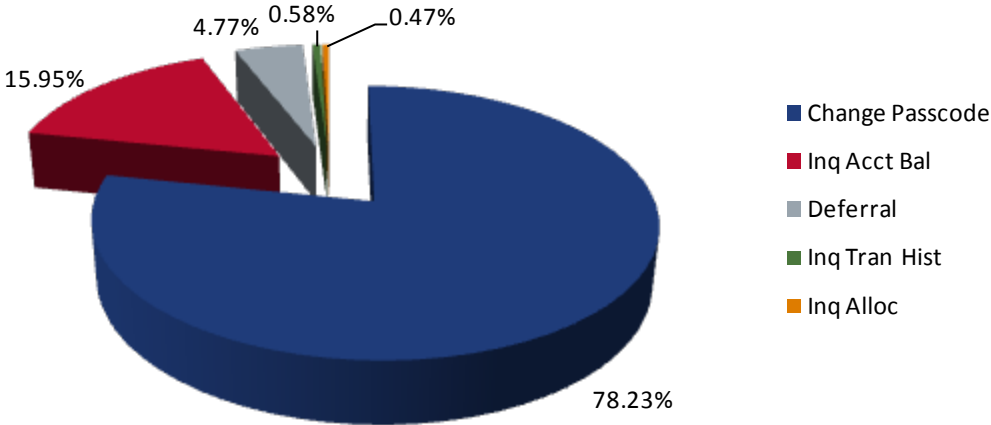
54.3%

KeyTalk (IVR) Activity - Continued



KeyTalk (IVR) Activity - Continued

Q3 2015 Usage



Call Center and VRU Statistics

Wisconsin	Jan	Feb	Mar	Apr	May	Jun	Jul	Aug	Sep	1st Qtr	2nd Qtr	3rd Qtr	YTD
Total Calls Offered	2,303	1,838	1,793	2,066	1,548	1,647	1,816	1,642	1,530	5,934	5,261	4,988	16,183
Total Calls Answered	2,274	1,808	1,768	2,027	1,537	1,629	1,802	1,599	1,516	5,850	5,193	4,917	15,960
Total Calls Abandoned	29	30	25	39	11	18	14	43	14	84	68	71	223
CS Average Speed of Answer	0:40	0:45	0:52	0:44	0:30	0:22	0:18	0:53	0:11	0:45	0:33	0:26	0:42
CS Average Abandon Time	3:24	3:28	3:26	1:47	1:49	0:57	0:24	3:40	0:41	3:25	1:32	2:32	3:26
CS Average Talk Time	6:22	5:58	6:17	6:06	6:34	6:23	6:33	6:24	6:01	6:13	6:19	6:49	6:11
Calls answered w/in 90 sec	1,951	1,576	1,476	1,684	1,359	1,513	1,707	1,347	1,465	5,003	4,556	4,519	14,078
CS % of Calls Aban incl EIVR	0.67%	0.77%	0.70%	0.95%	0.35%	0.58%	0.41%	1.34%	0.48%	0.71%	0.65%	0.74%	0.70%
Service Level w/in 90 sec incl IVR	93%	94%	92%	92%	94%	96%	97%	92%	98%	93%	94%	96%	94%

Disclosures

Core securities, when offered, are offered through GWFS Equities, Inc. and/or other broker dealers.

GWFS Equities, Inc., Member FINRA/SIPC, is a wholly owned subsidiary of Great-West Life & Annuity Insurance Company. Empower Retirement refers to the products and services offered in the retirement markets by Great-West Life & Annuity Insurance Company (GWL&A), Corporate Headquarters: Greenwood Village, CO; Great-West Life & Annuity Insurance Company of New York, Home Office: White Plains, NY; and their subsidiaries and affiliates. The trademarks, logos, service marks, and design elements used are owned by their respective owners and are used by permission.



EMPOWER™