



STATE OF WISCONSIN
Department of Employee Trust Funds
David A. Stella
SECRETARY

801 W Badger Road
PO Box 7931
Madison WI 53707-7931
1-877-533-5020 (toll free)
Fax (608) 267-4549
<http://etf.wi.gov>

CORRESPONDENCE MEMORANDUM

DATE: November 5, 2009
TO: Teachers Retirement Board
Wisconsin Retirement Board
FROM: Diane Poole, Director
Disability Programs Bureau
SUBJECT: July – September 2009 Quarterly Disability Annuity Statistics

This memo is for informational purposes only. No Board action is required.

Attached is the Wisconsin Retirement System (WRS) *Disability Benefit Annuity Statistical Report* for July through September 2009. The report provides quarterly data on: number of annuities started, options selected, gender, determination, age, and disability type.

TRENDS

The trends, when compared to the same quarter over the past five years, are as follows:

- The number of new disability annuities is lower. The Teachers Retirement Board (TR) had 10 under its jurisdiction, compared to an average of 20; the Wisconsin Retirement Board (WR) had 34 under its jurisdiction, compared to an average of 44.
- The most-selected annuity options under TR and WR jurisdiction were “100% Continued to Named Survivor (Joint Survivor) with 180 Payments Guaranteed.”
- For TR and WR Board, females continue to be the predominant user of the § 40.63 Disability Retirement Annuity benefit.
- The majority of applications are approved; a very small number are denied.
- The predominant age group for TR Board related annuities this quarter was 61-65, compared to 51-55 in the previous five years. The predominant age group for WR Board annuities remains 51-55.

Reviewed and approved by Tom Korpady, Division of Insurance Services.

Signature Date

Board	Mtg Date	Item #
WR	12/03/09	4A
TR	12/03/09	4A

- The prevalent disability types for TR Board annuities for this quarter in the last five years are: cancer, multiple medical problems and mental illness/neurology. For WR Board annuities, the prevalent disability types are: orthopedic, cancer and multiple medical problems.

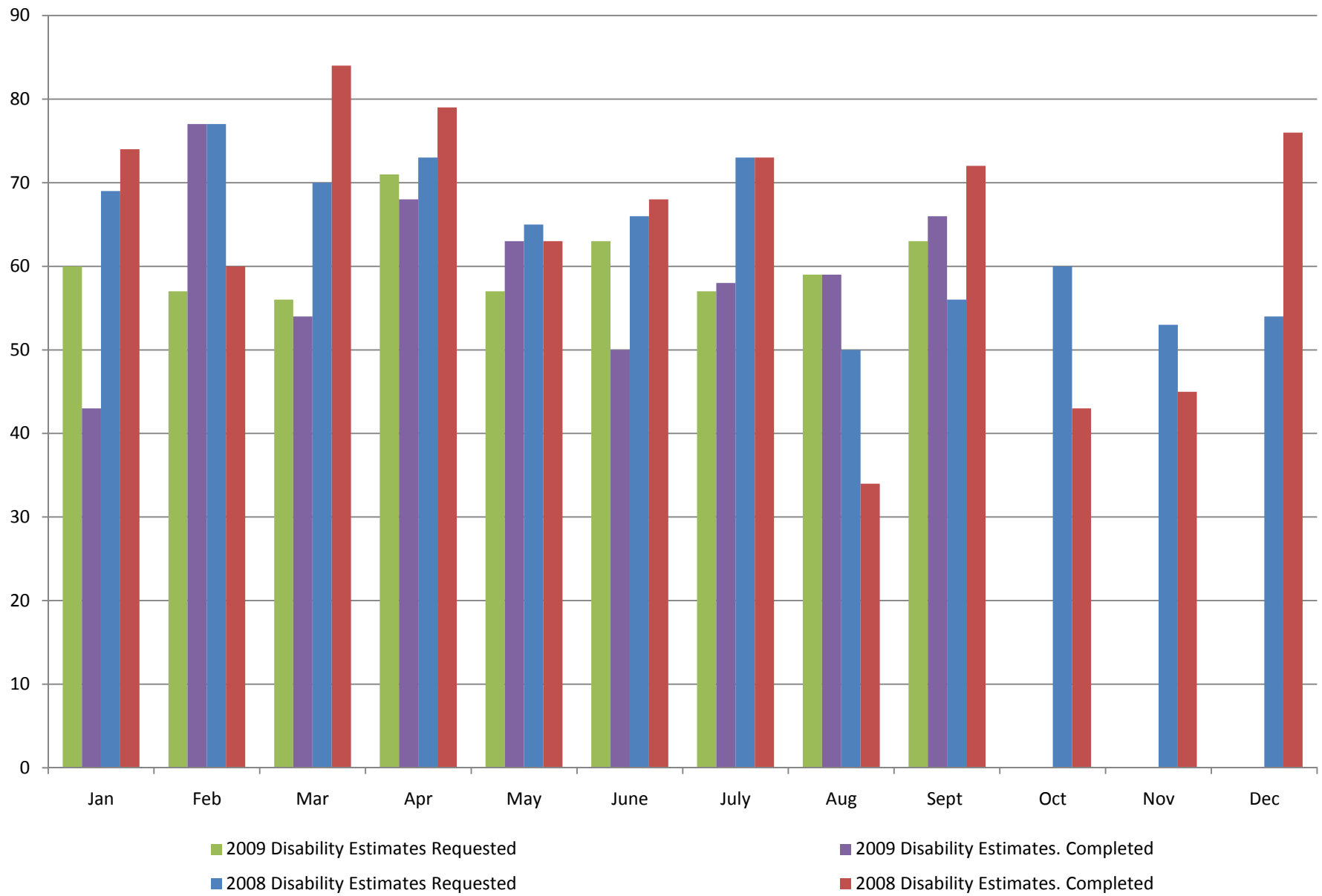
PRIORITIES

The top priority for the Disability Programs Bureau is to approve disability benefits as quickly as possible so individuals are not without income. Approving a disability benefit requires extensive follow-up with the applicant, employer, and health care providers. An application can take up to one year to process because of this inherent dependency on outside sources to provide documentation. The second priority is to maintain existing disability accounts. This requires obtaining the necessary medical and income information, which again requires extensive communication with outside sources.

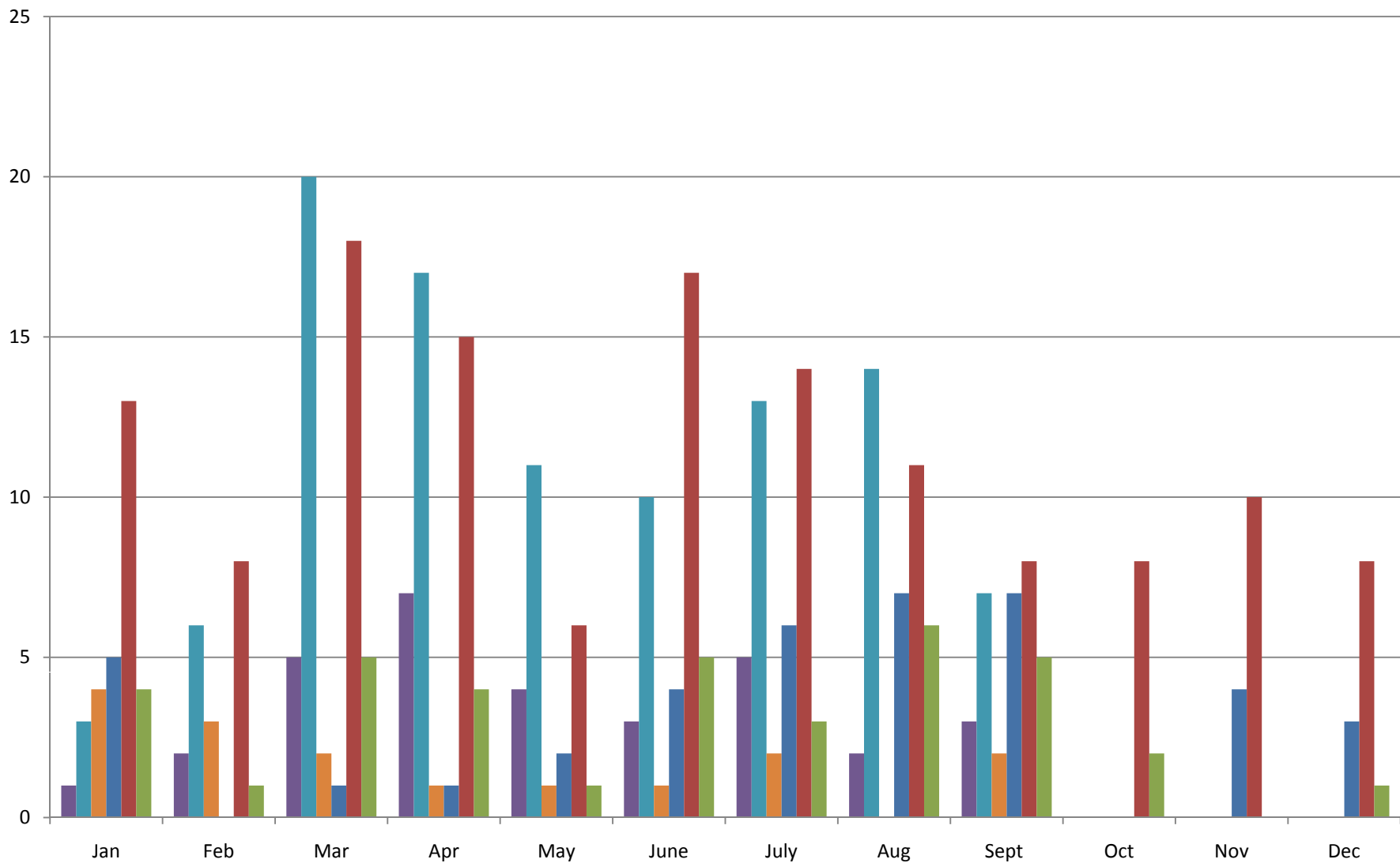
We would appreciate any feedback that you may offer for improving this report. Staff will be available at the meeting to answer questions. You may also contact Diane Poole at (608) 266-5387 (e-mail diane.poole@etf.state.wi.us) with comments or questions.

Attachment: Disability Benefit Annuity Statistical Report

2009 v. 2008 Disability Estimates Requested & Completed



Disability Annuities Started 2009 v. 2008



■ 2009 Teachers Retirement Board § 40.63

■ 2009 Wisconsin Retirement Board § 40.63

■ 2009 § 40.65 Duty Disability

■ 2008 Teachers Retirement Board § 40.63

■ 2008 Wisconsin Retirement Board § 40.63

■ 2008 § 40.65 Duty Disability

**STATE OF WISCONSIN
DEPARTMENT OF EMPLOYEE TRUST FUNDS**

**WISCONSIN RETIREMENT SYSTEM (WRS)
DISABILITY BENEFIT ANNUITY STATISTICAL REPORT
JULY - SEPTEMBER 2009**

This report provides a summary of disability information for the Board's review. Department staff have reviewed and made the following recommendations on initial disability applications submitted by participants. Staff review individual participant applications on an ongoing basis to determine if disability benefits can continue. If you have questions or would like additional information regarding disability benefits, please contact Diane Poole at (608) 266-5387 or diane.poole@etf.state.wi.us.

The following key describes the type of disability determinations made by ETF staff:

Approved – Disability applications that meet the service, medical and employer criteria required under Wis. Stat. § 40.63 (1) and (4), are approved and processed for benefit payments.

Cancelled – Disability applications that are incomplete within one year after the Department receives the disability application are cancelled. Applications are considered incomplete if the Department has not received the required medical certification and/or employer statement.

Deemed Approved – Disability applications are deemed approved if the applicant meets the service requirement and the Department receives a valid disability application and one *Medical Report* certifying the applicant's disability prior to the applicant's death. The employer is also required to submit an Employer Statement.

Denial – Disability applications are denied if the applicant does not meet all of the statutory requirements (service, medical and employer statement).

Denial Rescinded: Approved – Disability applications that were initially denied because the applicant did not meet the statutory requirements. The denial has since been overturned and the application approved due to receipt of additional information or as determined by the appropriate Board.

Termed – Disability applications that were initially approved and benefit payments made may be terminated if the Department receives information from a physician certifying that the individual no longer meets the medical definition for a disability or the individual does not comply with requests for medical or financial information.

Termed Rescinded: Approved – Disability applications that were initially approved, but the annual medical recertification was completed indicating that the individual was no longer disabled or the individual did not comply with medical or financial requests. The termination may be rescinded upon receipt of a certifying medical report, financial information, or based on an appeal determination.

Withdrawn/Void/Invalid – Disability applications are withdrawn at the request of the applicant. This occurs most often when an applicant returns to active employment and no longer meets the statutory requirements for a disability benefit.

§ 40.63 Waiver – Disability application is submitted and there is a Long-Term Disability Insurance (LTDI) election form that waives all rights to benefits under Wisconsin statutes § 40.63 for a WRS disability retirement benefit.

WRS DISABILITY BENEFITS				
	July	August	Sept	Total
Disability Estimates Requested	57	59	63	179
Disability Estimates Completed	58	59	66	183
Disability Annuities Started (on payroll)				
Teachers Retirement Board § 40.63	5	2	3	10
Wisconsin Retirement Board § 40.63	13	14	7	34
§ 40.65 Duty Disability (WR Board)	2	0	2	4
Total Annuities Started	20	16	12	48

**STATE OF WISCONSIN
DEPARTMENT OF EMPLOYEE TRUST FUNDS**

**WISCONSIN RETIREMENT SYSTEM (WRS)
DISABILITY BENEFIT ANNUITY STATISTICAL REPORT
JULY - SEPTEMBER 2009**

TEACHERS BOARD DISABILITY ANNUITIES STARTED BY OPTION SELECTED				
Option	July	August	Sept	Total
100% Continued to Named Survivor (Joint Survivor) with 180 Payments Guaranteed	0	2	1	3
Life Annuity with 60 Payments Guaranteed For Annuitant's Life Only	0	0	0	0
Life Annuity with 180 Payments Guaranteed	3	0	0	3
75% Continued to Named Survivor (Joint Survivor)	1	0	1	2
100% Continued to Named Survivor (Joint Survivor)	1	0	0	1
75% Continued to Annuitant or Named Survivor (Joint Survivor) Upon Death of Either	0	0	1	1
TOTAL	5	2	3	10

TEACHERS BOARD DISABILITY ANNUITIES STARTED BY GENDER					
§ 40.63 Disability Benefits by Gender	% Pop.*	July	August	Sept	% of Total
Females	68%	4	2	1	70%
Males	32%	1	0	2	30%
TOTAL	100%	5	2	3	100%

*Active and inactive Teacher's Retirement Board population as of 12/31/08 for 2009

TEACHERS BOARD DISABILITY STATISTICS FOR APPLICATIONS SUBMITTED

TEACHERS BOARD DISABILITY APPLICATIONS SUBMITTED BY DETERMINATION				
Type of Determination	July	August	Sept	Total
Approved	6	3	4	13
Cancelled	0	0	0	0
Deemed Approved	0	0	0	0
Denial	0	0	1	1
Denial Rescinded: Approved	0	0	0	0
Termed	0	0	0	0
Termed Rescinded: Approved	0	0	0	0
Void/Withdrawn/Invalid	0	0	0	0
§ 40.63 Waiver	0	0	0	0
TOTAL	6	3	5	14

TEACHERS BOARD DISABILITY APPLICATIONS SUBMITTED BY AGE				
§ 40.63 Disability Benefits by Age	July	August	Sept	Total
20-25	0	0	0	0
26-30	0	0	0	0
31-35	0	0	0	0
36-40	0	0	0	0
41-45	1	0	0	1
46-50	0	1	1	2
51-55	0	1	1	2
56-60	3	0	0	3
61-65	2	1	3	6
TOTAL	6	3	5	14

**STATE OF WISCONSIN
DEPARTMENT OF EMPLOYEE TRUST FUNDS**

**WISCONSIN RETIREMENT SYSTEM (WRS)
DISABILITY BENEFIT ANNUITY STATISTICAL REPORT
JULY - SEPTEMBER 2009**

TEACHERS BOARD DISABILITY APPLICATIONS SUBMITTED BY DISABILITY TYPE				
Disability Type	July	August	Sept	Total
Brain Injury	0	0	0	0
Cancer	3	2	1	6
Cardiovascular	0	0	0	0
Chronic Fatigue	0	0	0	0
Diabetes	0	0	0	0
Eye Disorders	0	0	0	0
Gastro/Intestinal	0	0	0	0
Mental Illness	1	1	0	2
Multiple Medical Problems	0	0	2	2
Multiple Sclerosis	0	0	0	0
Muscle/Tissue	0	0	0	0
Nephrology	0	0	0	0
Neurology	2	0	1	3
Orthopedic	0	0	1	1
Other	0	0	0	0
Reflex Sympathetic Dystrophy (RSD)	0	0	0	0
Respiratory	0	0	0	0
Unknown	0	0	0	0
TOTAL	6	3	5	14

**STATE OF WISCONSIN
DEPARTMENT OF EMPLOYEE TRUST FUNDS**

**WISCONSIN RETIREMENT SYSTEM (WRS)
DISABILITY BENEFIT ANNUITY STATISTICAL REPORT
JULY - SEPTEMBER 2009**

WI RETIREMENT BOARD DISABILITY ANNUITIES STARTED BY OPTION SELECTED				
Option	July	August	Sept	Total
100% Continued to Named Survivor (Joint Survivor) with 180 Payments Guaranteed	4	6	4	14
Life Annuity with 60 Payments Guaranteed For Annuitant's Life Only	0	0	1	1
Life Annuity with 180 Payments Guaranteed	4	1	1	6
75% Continued to Named Survivor (Joint Survivor)	3	3	0	6
100% Continued to Named Survivor (Joint Survivor)	2	1	0	3
75% Continued to Annuitant or Named Survivor (Joint Survivor) Upon Death of Either	0	3	0	3
	0	0	1	1
TOTAL	13	14	7	34

WI RETIREMENT BOARD DISABILITY ANNUITIES STARTED BY GENDER					
§ 40.63 Disability Benefits by Gender	% Pop.*	July	August	Sept	% of Total
Females	62%	9	6	4	56%
Males	38%	4	8	3	44%
TOTAL	100%	13	14	7	100%

* Active and inactive WR population as of 12/31/2008 for 2009

WI RETIREMENT BOARD DISABILITY STATISTICS FOR APPLICATIONS SUBMITTED

WI RETIREMENT BOARD DISABILITY APPLICATIONS SUBMITTED BY DETERMINATION				
Type of Determination	July	August	Sept	Total
Approved	13	4	8	25
Cancelled	0	0	1	1
Deemed Approved	0	1	0	1
Denial	0	0	0	0
Denial Rescinded: Approved	0	0	0	0
Other	0	0	0	0
Termed	0	0	0	0
Term. Rescinded: Approved	0	0	0	0
Void/Withdrawn/Invalid	0	0	0	0
§ 40.63 Waiver	0	0	0	0
TOTAL	13	5	9	27

WI RETIREMENT BOARD DISABILITY APPLICATIONS SUBMITTED BY AGE				
§ 40.63 Disability Benefits by Age	July	August	Sept	Total
20-25	0	0	0	0
26-30	0	0	0	0
31-35	0	0	0	0
36-40	0	0	0	0
41-45	0	0	0	0
46-50	3	1	3	7
51-55	7	4	5	16
56-60	2	0	1	3
61-65	1	0	0	1
TOTAL	13	5	9	27

**STATE OF WISCONSIN
DEPARTMENT OF EMPLOYEE TRUST FUNDS**

**WISCONSIN RETIREMENT SYSTEM (WRS)
DISABILITY BENEFIT ANNUITY STATISTICAL REPORT
JULY - SEPTEMBER 2009**

WI RETIREMENT BOARD DISABILITY DETERMINATIONS				
Disability Type	July	August	Sept	Total
Brain Injury	0	0	0	0
Cancer	1	1	1	3
Cardiovascular	2	0	0	2
Chemical Dependency	0	0	0	0
Diabetes	0	0	0	0
Eye Disorders	0	0	0	0
Gastro/Intestinal	1	0	0	1
Hearing Disorders	0	0	0	0
Mental Illness	0	1	0	1
Multiple Medical Problems	3	2	1	6
Multiple Sclerosis	0	0	0	0
Muscle/Tissue	0	0	0	0
Nephrology	0	0	0	0
Neurology	1	1	2	4
Orthopedic	5	0	5	10
Other	0	0	0	0
Reflex Sympathetic Dystrophy (RSD)	0	0	0	0
Respiratory	0	0	0	0
Unknown	0	0	0	0
TOTAL	13	5	9	27