

Office of Enterprise Initiatives (OEI) TIM Project Status

**ETF Board Meeting
December 2013**



*Bob Martin, Director, Office of
Enterprise Initiatives (OEI)*

OEI and TIM Project Terminology

- **OEI** – Office of Enterprise Initiatives
- **PMO** – Project Management Office
- **TIM** – Transformation Integration and Modernization initiative “umbrella”
- **BI** – Business Intelligence/Reporting (New)

Project Governance Review

- Governance is one key to successful projects
 - Coordination
 - Communication
 - Fast, reliable decision making
 - Multiple stakeholders represented
- Key Core Team **dedicated** to their project roles
- Separation of duties (e.g. Contract Admin.)
- Similar to what we do for smaller projects

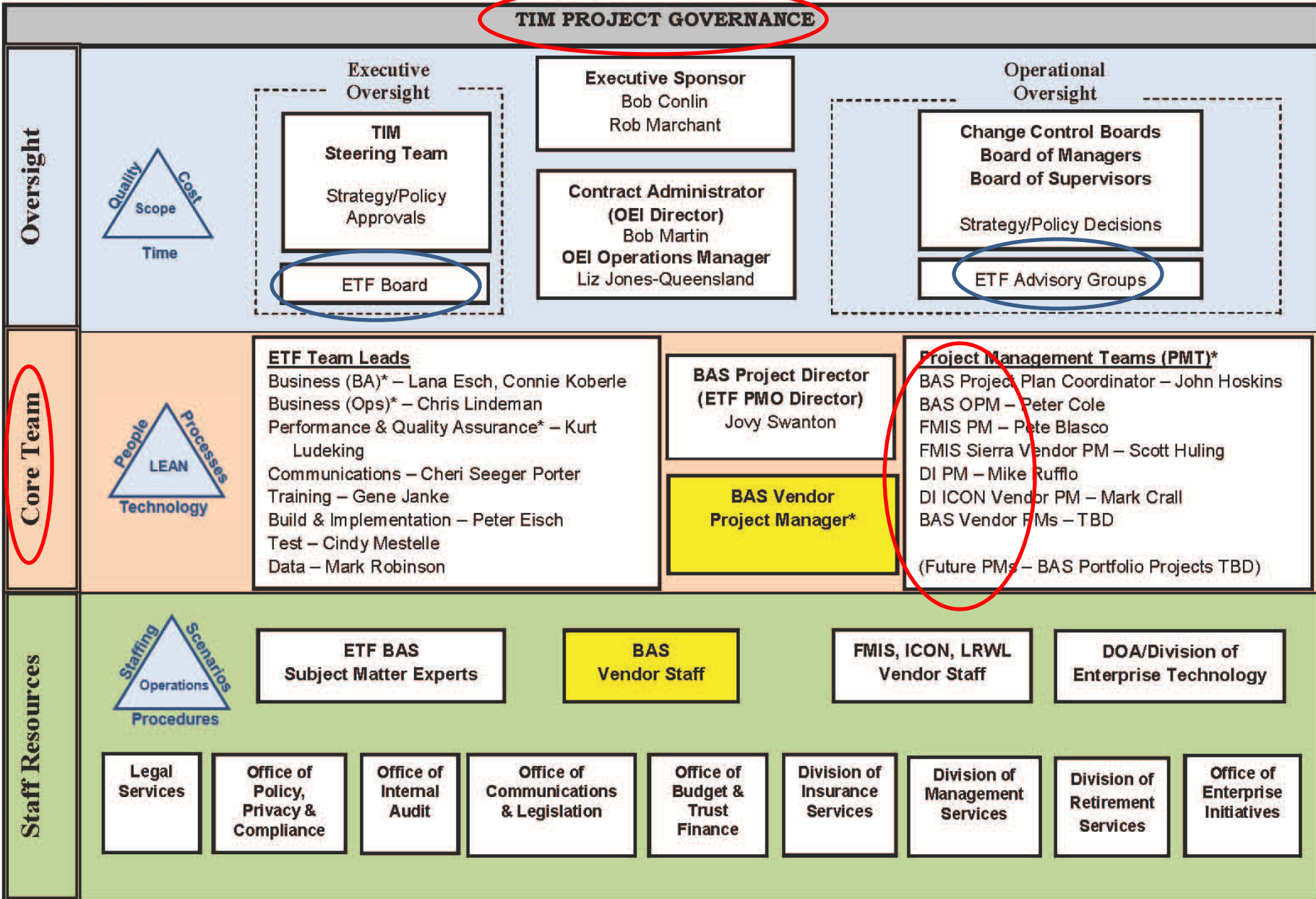


TIM Governance Scope

Transformation, Integration and Modernization

- **FMIS** – Financial Management Information System
- **DI** - Data Integrity Project
- **BAS** – Benefits Administration System
- **BI** – Business Intelligence
- Testing, training, communicating, etc.





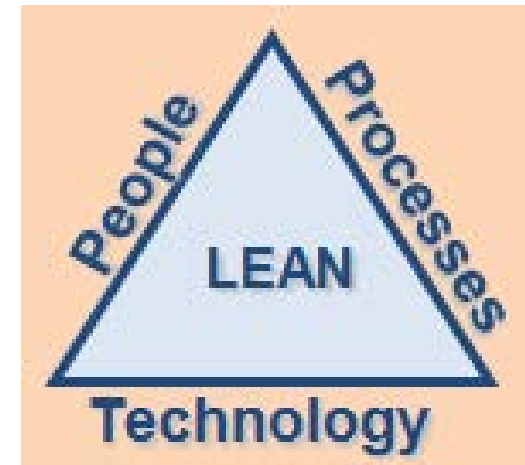
* = Staff assigned to PMO

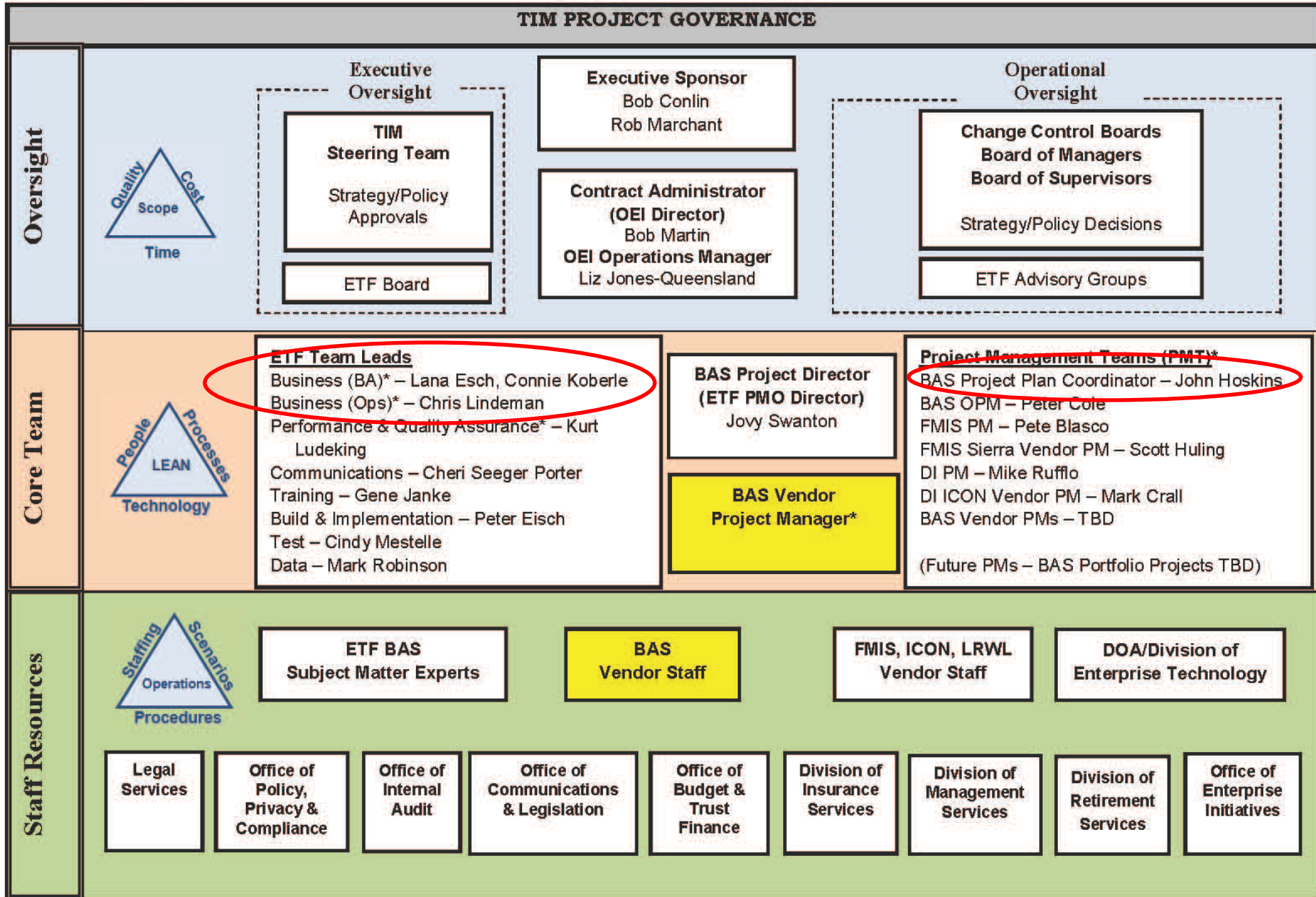
CORE Team Review



- Core Team

- Project Management
- Project Management Team (PMT) coordination
- Team Leads
 - Business Operations
 - Business Analysis
 - Support
 - Communications
 - Training
 - IT Related Teams





* = Staff assigned to PMO

Project Plan Coordinator

- John Hoskins
 - New to ETF from DOT
- Role
 - Coordinate and orchestrate timing on all concurrent projects and team lead work efforts, as necessary
 - Ensure vendor(s) are included in all phases
 - Back-up to Jovy – BAS Project Director

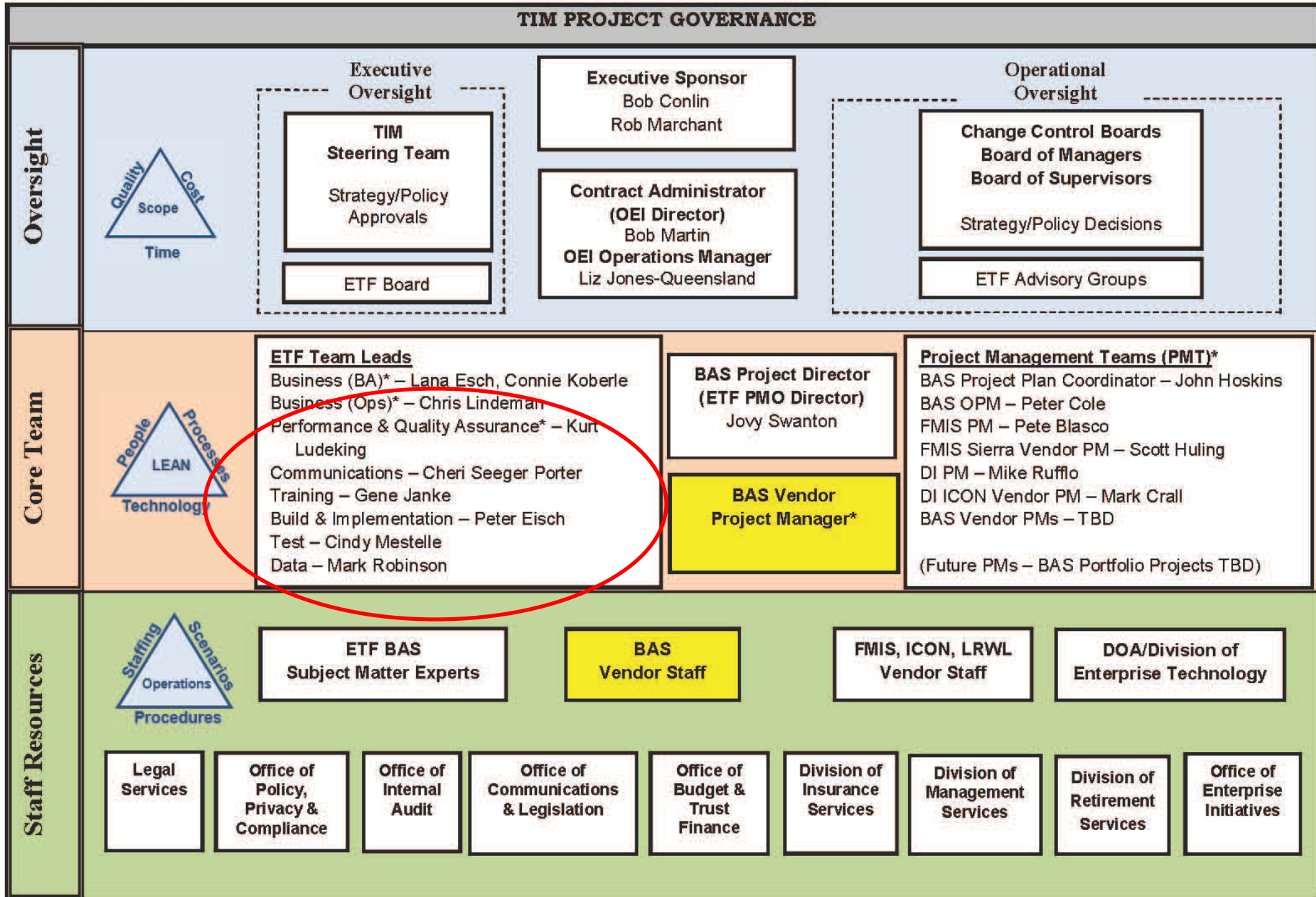


Team Leads

- Business Operations – Chris Lindeman
 - Operations coordination
 - What and Who
 - Track issues/risks



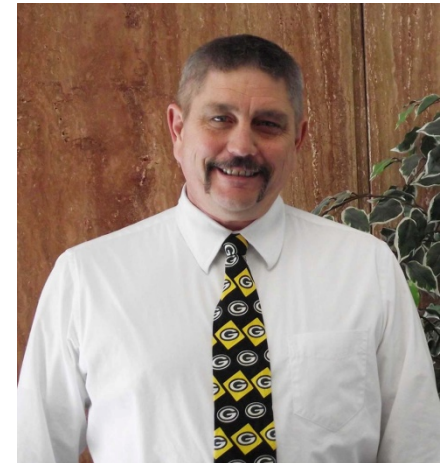
- Business Analysis – Lana Esch/Connie Koberle
 - Detailed process, information and data knowledge
 - How and Why



* = Staff assigned to PMO

Team Leads

- Performance and Quality Assurance – Kurt Ludeking
 - Support (technical) – now and going forward
 - Project Team(s)
 - Department users
 - Employers, Members, TPA's, other users
 - Quality Assurance
 - Vendor,
 - TIM projects



Team Leads

- Communications – Cheri Seeger Porter
 - Internal
 - External
 - Documentation
 - System (technical)
 - MOU's, if needed
 - User (ETF, member, TPA, etc.)
 - Project (plans, requirements, timelines, etc.)
 - Forms
 - Written, electronic



Team Leads

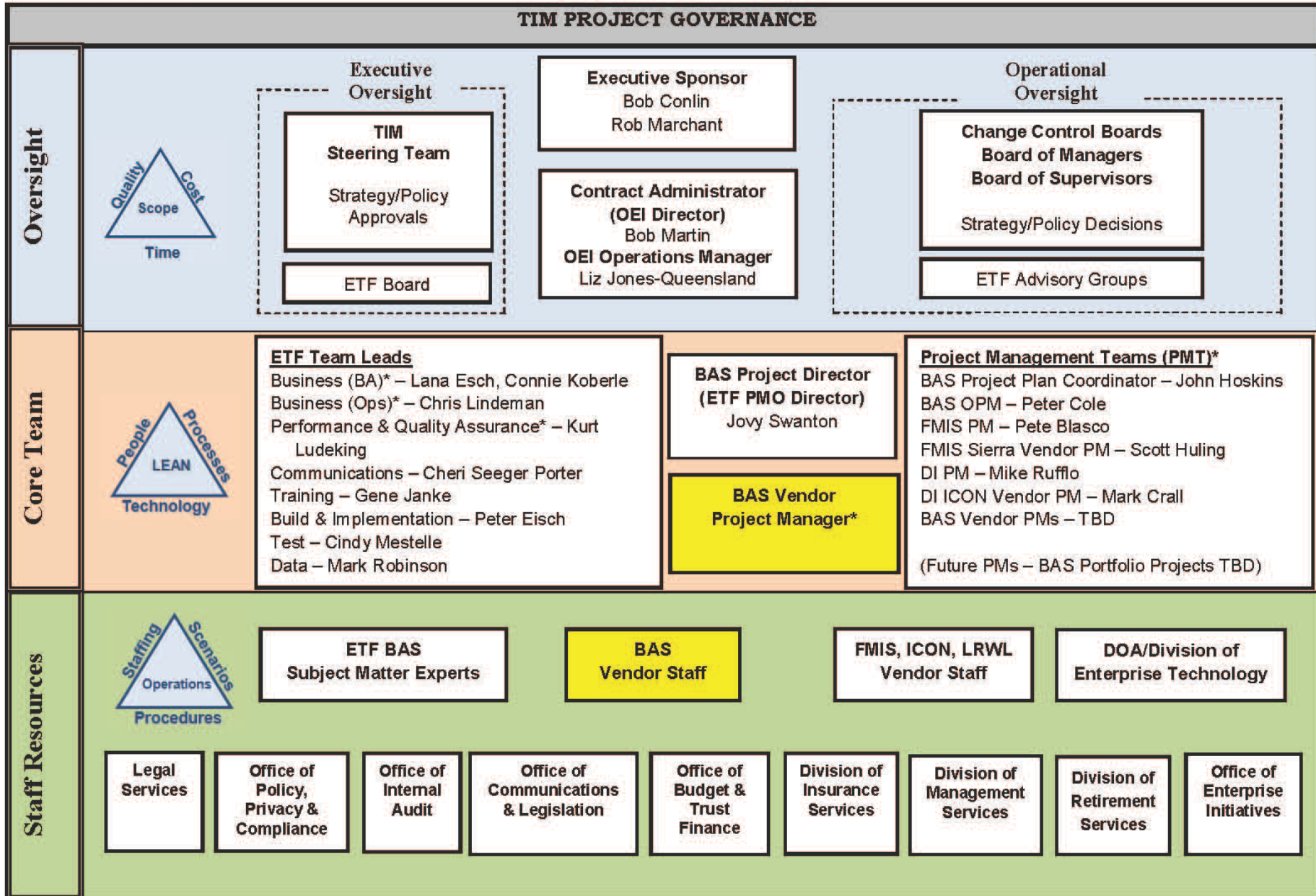
- Training – Gene Janke
 - ETF Staff
 - Employers/TPA's
 - Members
 - Soft skills (e.g. change management)
 - Computer based training
 - Face-to-face/Train the trainer



Team Leads

- IT Related Teams
 - Build and Implementation – Peter Eisch
 - Puts the pieces together
 - Testing – Cindy Mestelle
 - Ensures quality testing is done and done right
 - Data – Mark Robinson
 - Cleansing
 - Transformation
 - Migration





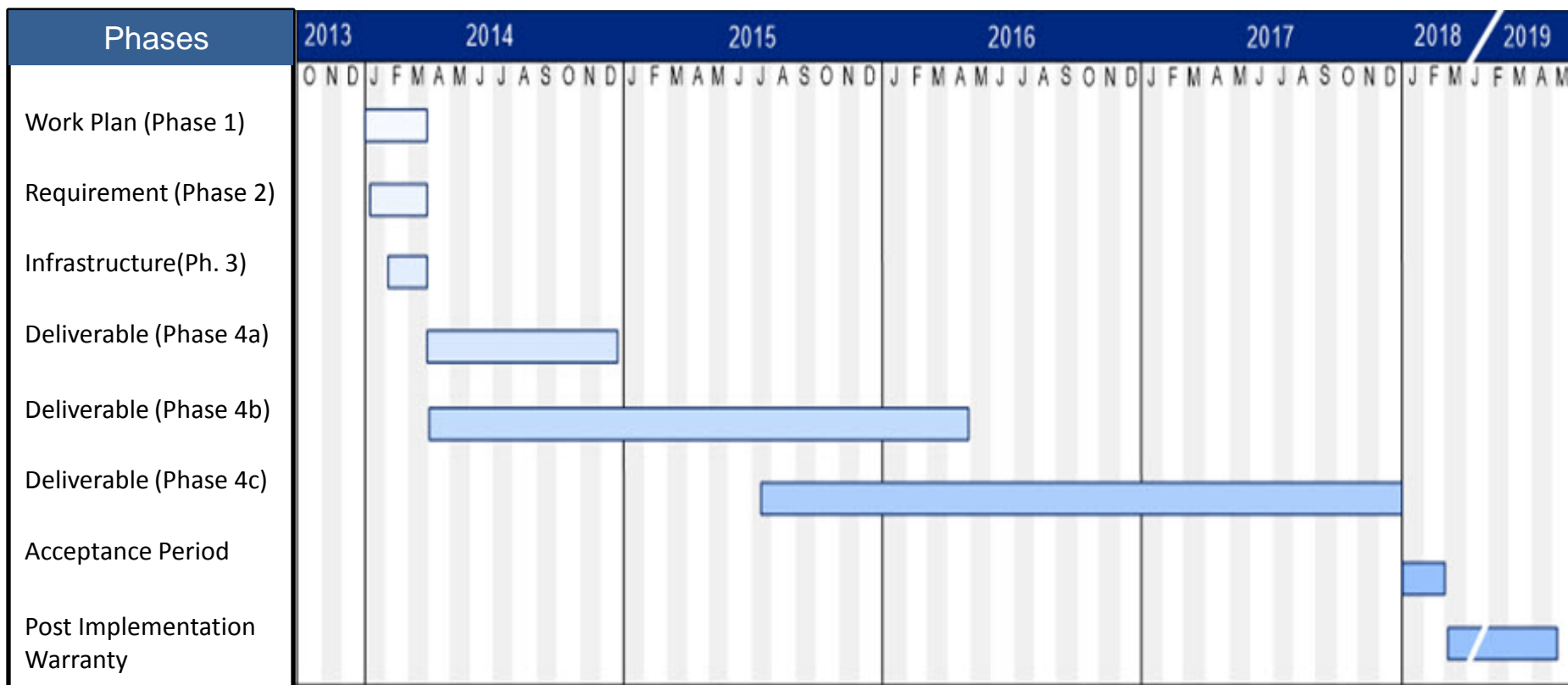
* = Staff assigned to PMO

Optimistic High-level Timeline – 2014

- January 2014
 - Finalize vendor contract
 - Teambuilding
 - Project team space build-out/moves
 - Vendor on site
- February 2014
 - Begin detailed design
- December 2014
 - First deliverable



Hypothetical Project Phasing



Potential risks to be aware of...

- Loss of key staff
- Legislative changes
 - Self-Insurance or other major health plan changes
- DET/DOA application hosting and technology infrastructure support
- Mitigation Strategies
 - Minimize changes to existing (legacy) applications during 3+ year implementation
 - Gain strong commitment from project team for 3+ years and recognize that commitment

TIM Project Status

Questions?



Contact: Bob.Martin@etf.wi.gov