



Group Insurance Board

February 19, 2014

Robert J Marchant

Deputy Secretary

Bob Martin

Director, Office of Enterprise Initiatives



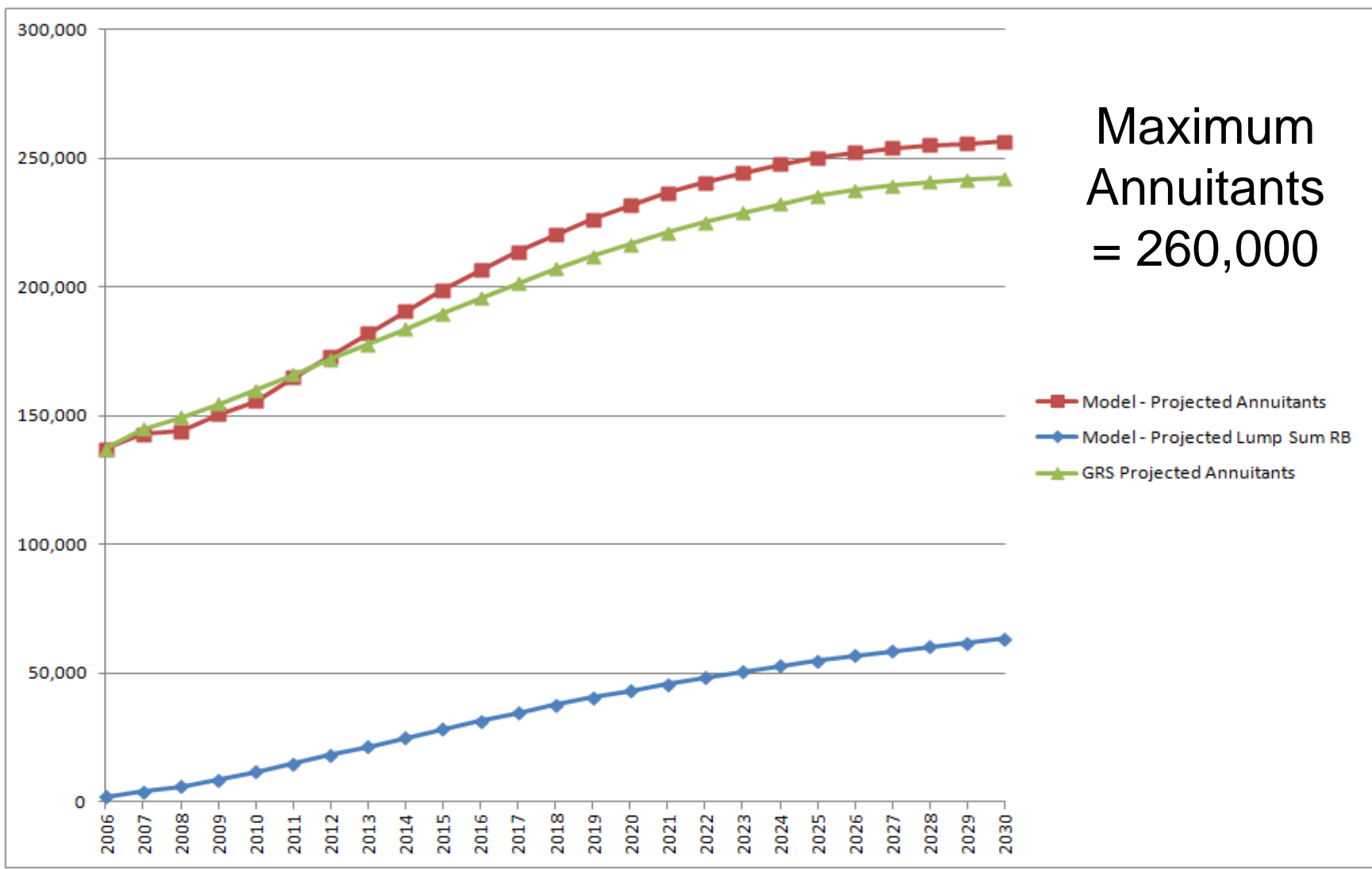
ETF Vision Statement

To become a leader among large public employee benefit systems by offering best practice customer services to our members

ETF Strategic Priorities and Goals

Provide WRS members with secure online access to their account, including the ability to securely update information online

Volume - Projected Population





Firefox

etfnet.wi https://web.etfnet.wi/

ETF WF Status Search

Imaging/Workflow System

Wed Oct 12 08:41:48 CDT 2011

Work Flow Status Search

Social Security Number:

Find: call Next Previous Highlight all Match case

Last Name: First Name: Last Name: First Name:

DOB: Gender: DOB: Gender:

Member Summary

Member Name	SSN	DOB	DOD	Gender	Party ID	Partner Name	SSN	DOB	DOD	Gender	Party ID	Source	Term Date

Find: call Next Previous Highlight all Match case

us information

Benefit Status

Wed Oct 12 08:33:57 CDT 2011

Google

ds

PROD Payroll 1



“Apple is a very disciplined company, and we have great processes. But that's not what it's about. Process makes you more efficient”

-- Steve Jobs



Transformation, Integration and Modernization (TIM) Overview

**Bob Martin - Director, Office of Enterprise Initiatives
Department of Employee Trust Funds**

Conceptual Department View



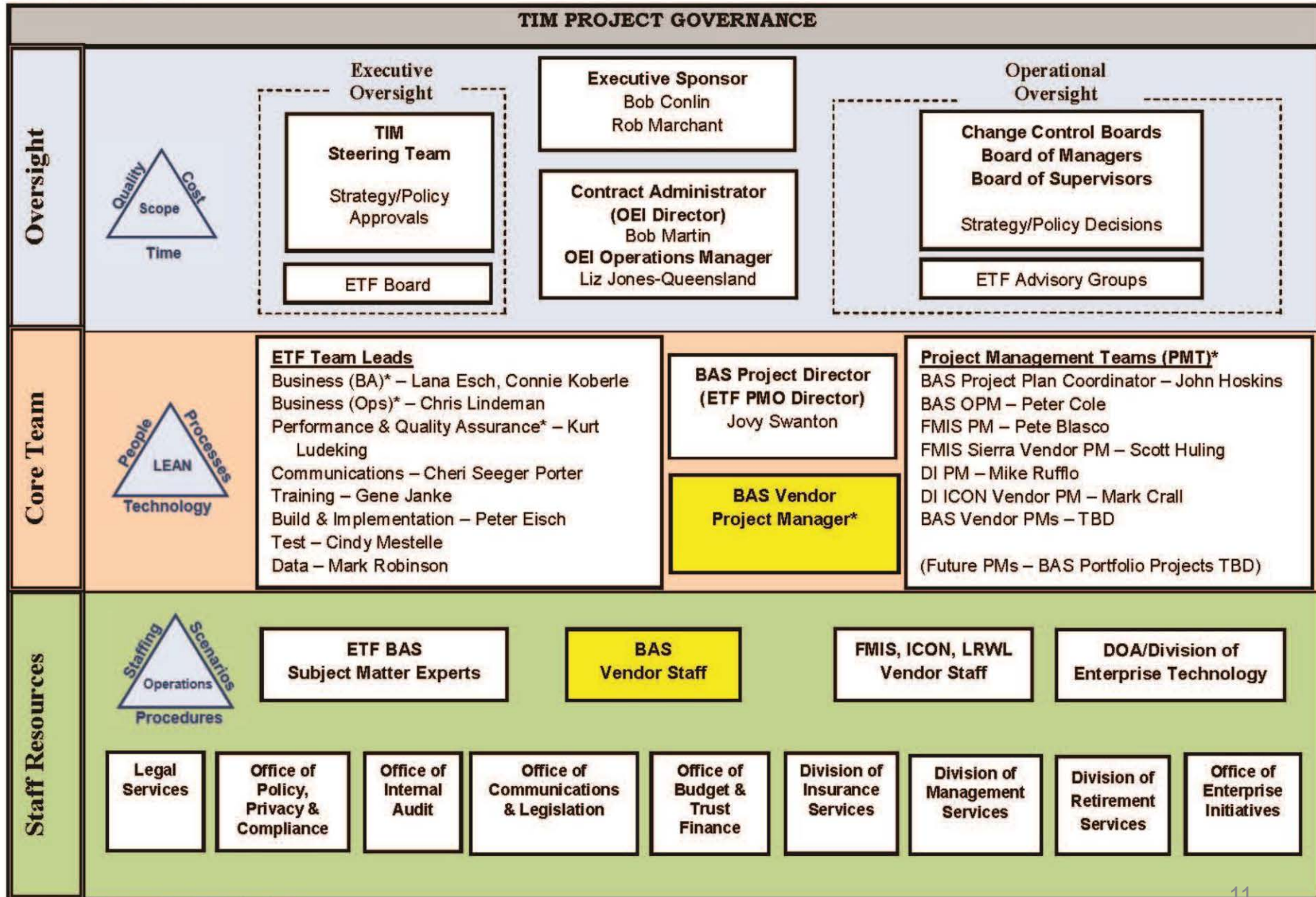
Office of Enterprise Initiatives (OEI) - dedicated to cross functional efforts
 Transformation, Integration and Modernization (TIM) – overall “portfolio” of projects

OEI/PMO Key TIM Initiatives

- TIM – Transformation, Integration and Modernization
 - ETF Strategic Partner (LRWL)
 - Financial Management Information System (FMIS)
 - Data Integrity Project (DI)
 - Benefits Administration System (BAS)
 - Enterprise Business Model (EBM)
- Data Governance
 - Data Stewards Council (DSC)
 - Data related policies/procedures
 - Data Management
- Day to Day Projects – approximately 20



Resource	FY2013						FY2014							
	Jan 2013	Feb 2013	Mar 2013	Apr 2013	May 2013	Jun 2013	Jul 2013	Aug 2013	Sep 2013	Oct 2013	Nov 2013	Dec 2013	Jan 2014	Etc.
Period Activity	RFP Development & Delivery					RFP Response			BAS Vendor Selection		BAS Implementation Planning to Begin			
LRWL	Develop/Deliver BAS RFP					Procurement Assistance			Oversight PM					
BAS Vendor		↑	↑	↑	RFP						BAS Vendor to Begin Implementation Plan			
EBM Team	Create/Deliver Logical Scenarios (Enterprise Business Model - EBM)					Resolve carryover scenario issues; Gather rules from DI / others; maintain scenarios			Support BAS; integrate/QA scenario mapping					
Data Integrity	Develop Plan and Begin Execution of Data Integrity Project													
FMIS	Procure FMIS & Implementation Partner		Plan & Implement FMIS Solution											
ETF-OEI	TIM Activities Oversight, Leadership & Ongoing Communications													
IT Support	Legacy Support and Enhancements													BAS



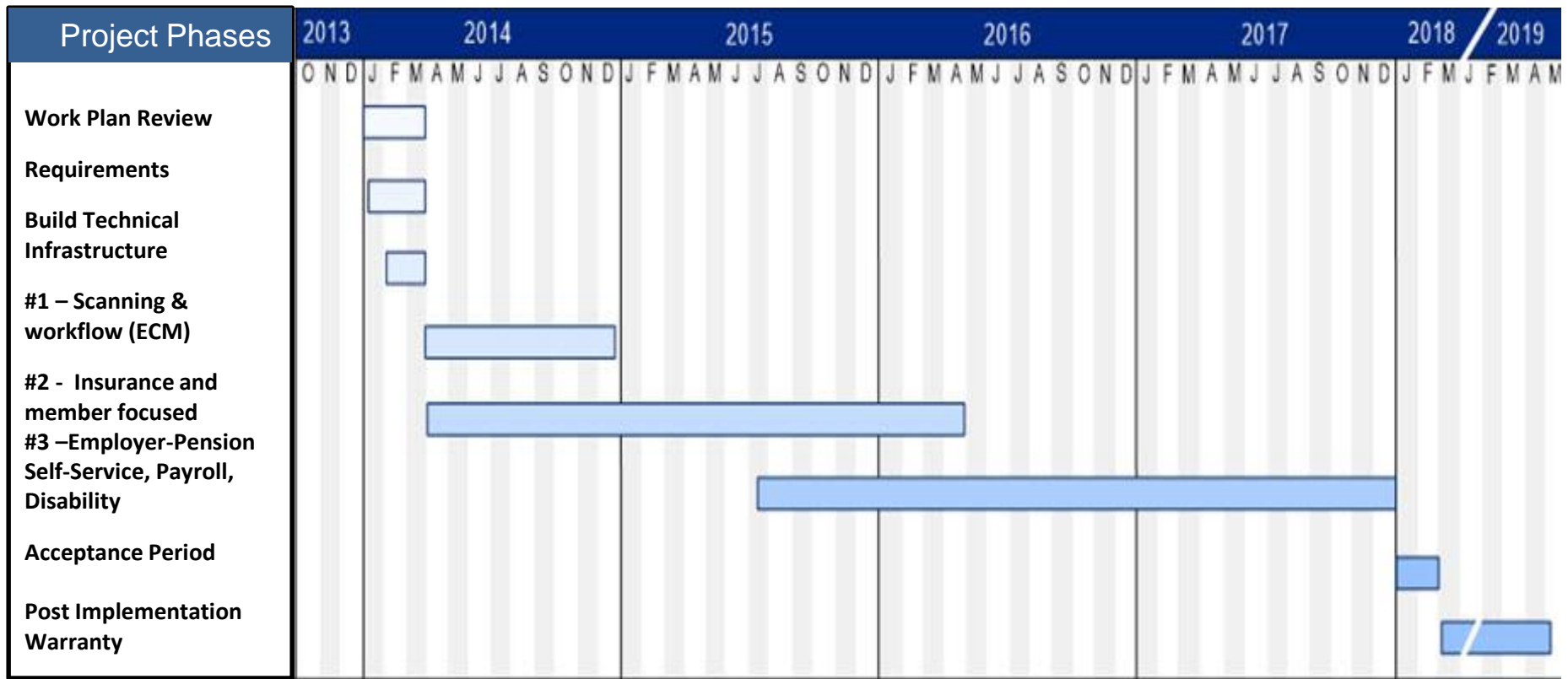
* = Staff assigned to PMO

High-level Timeline - 2014

- January 2014
 - Finalize vendor contract
 - Teambuilding
 - Project team space build-out/moves
 - Vendor on site
- February 2014
 - Begin detailed design
- December 2014
 - First deliverable – Enterprise Content Management



Hypothetical Project Phasing





Group Insurance Board

Questions?

Contact: Bob.Martin@etf.wi.gov