



STATE OF WISCONSIN
Department of Employee Trust Funds

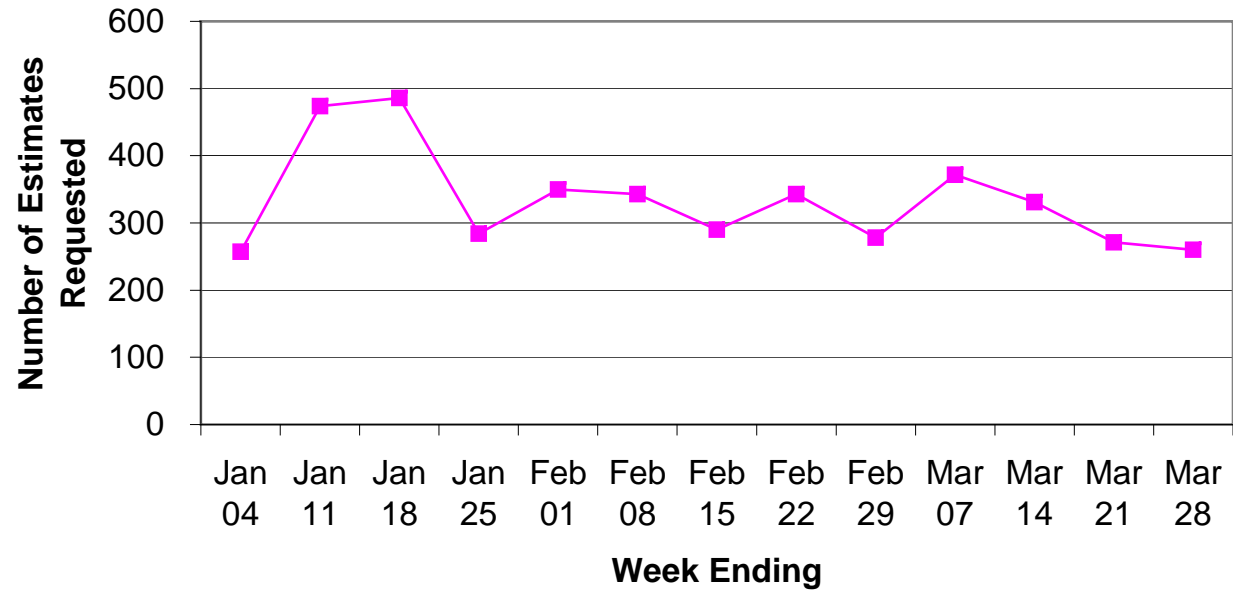
Wisconsin Retirement System (WRS) Benefit Information

January – March 2008

WRS RETIREMENT ESTIMATES

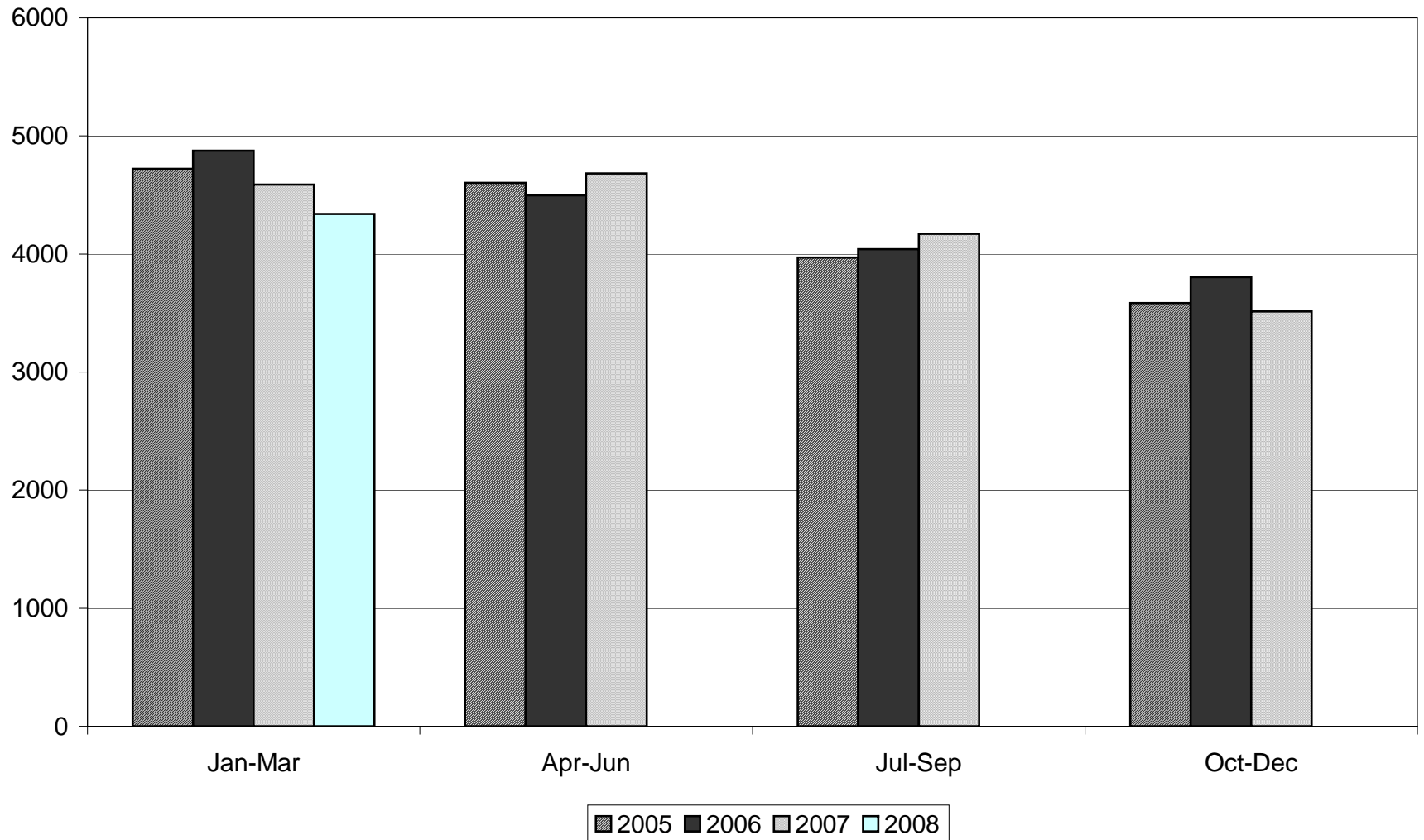
- 4,339 Retirement Estimates requested by participants during the period covering January – March 2008
- Estimates Requested decreased by 5.4% from the previous year's 1st quarter

Retirement Estimates Requested by Week 1st Quarter 2008



WRS RETIREMENT ESTIMATES
Retirement Estimates Requested
2005-2008

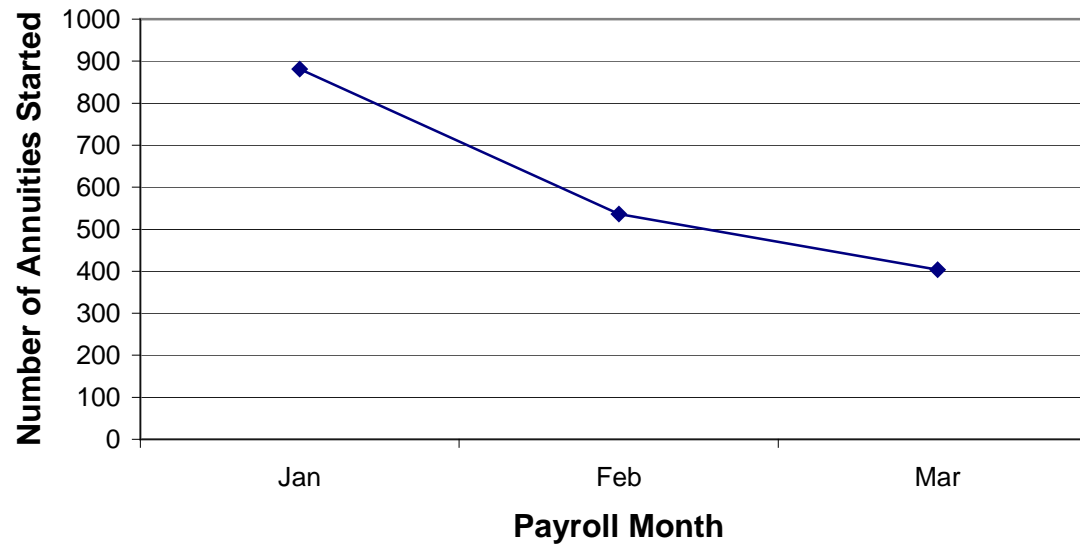
Participants can request a formal benefit estimate up to one year before anticipated retirement.



WRS RETIREMENT ANNUITIES

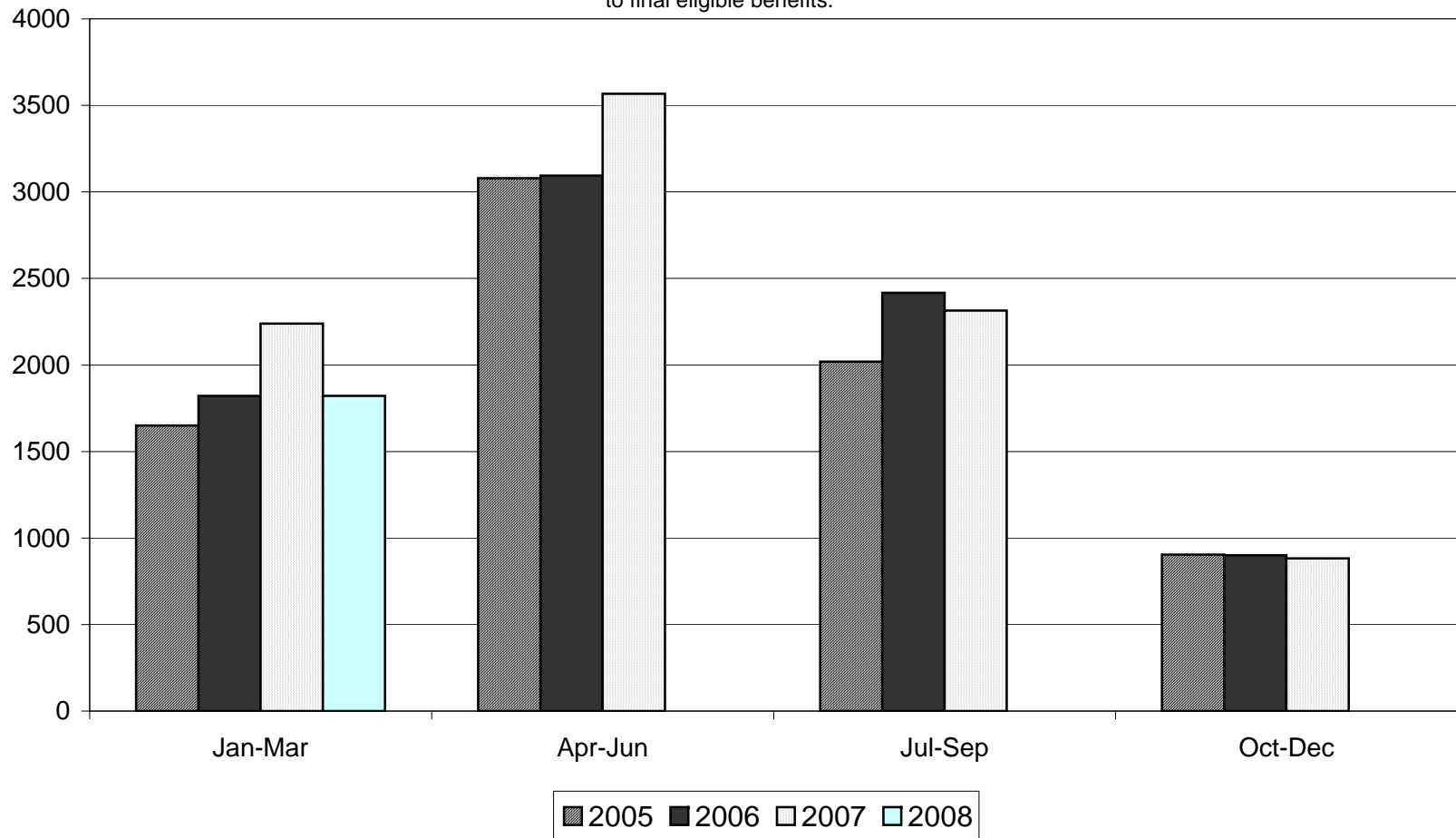
- 1,821 New Annuities started during the period covering January – March 2008
- 1,818 Annuities started on Estimated Payments and 3 Annuities started as Finalized Payments because the Department has the final service earnings and contribution data from the employer
- New Annuities started decreased by 18.7% from the previous year's 1st quarter

New Annuities Started by Month 1st Quarter 2008

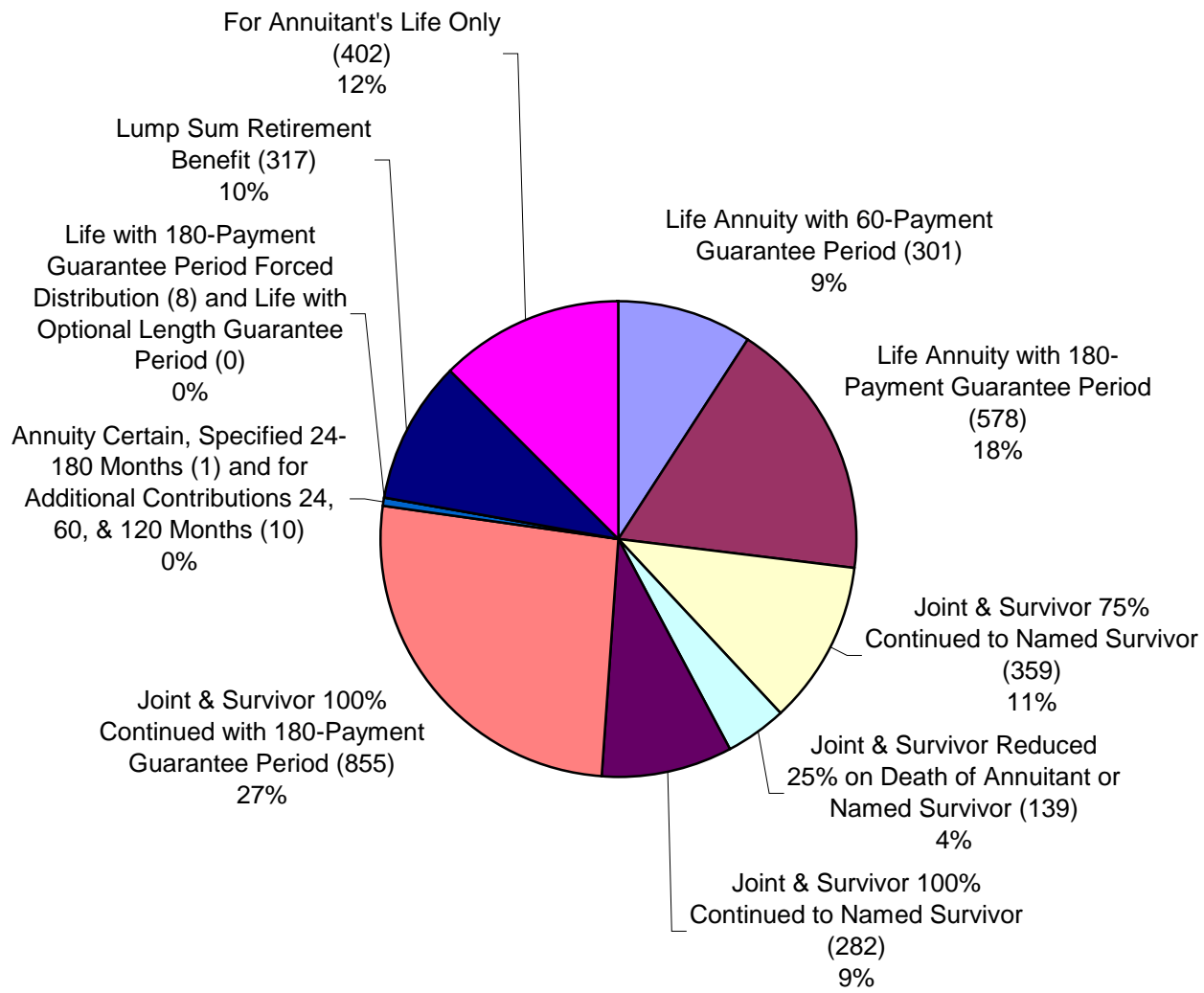


WRS RETIREMENT ANNUITIES
Estimated Annuities Started
2005 - 2008

New annuities are quickly processed by giving participants "estimated" annuities that are calculated as close as possible to final eligible benefits.



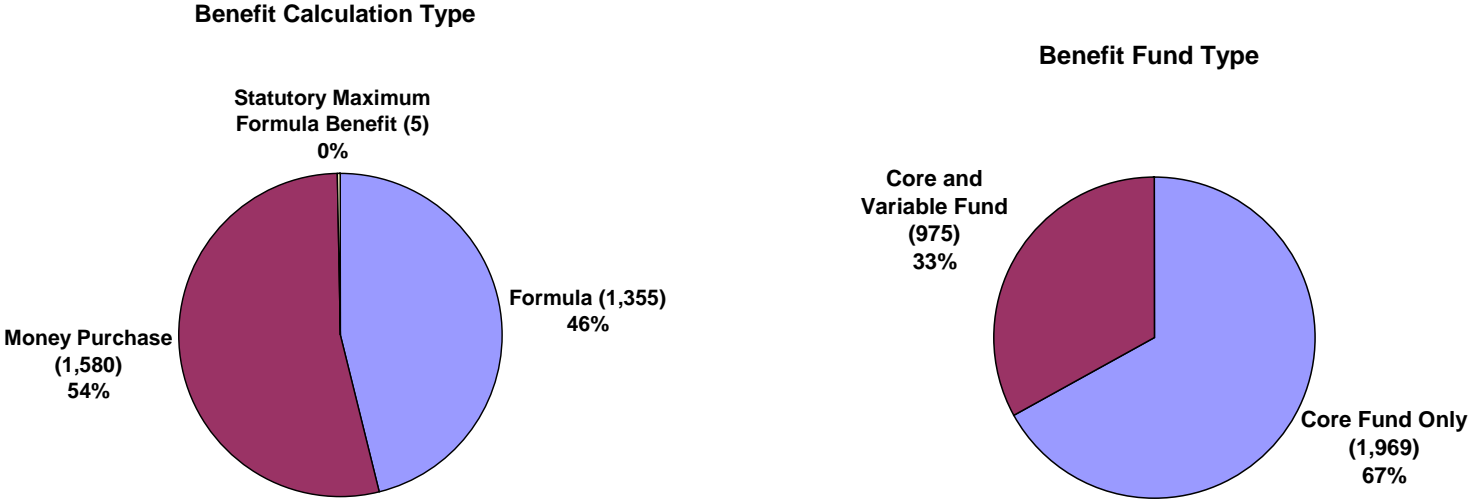
WRS RETIREMENT ANNUITIES
Benefit Options Taken
Finalized Annuities & Lump Sum Retirement Benefits
1st Quarter 2008



**WRS RETIREMENT ANNUITIES
Finalized Annuities
By Calculation and Fund Type
1ST Quarter 2008**

Compared to 2007:

- Formula Calculated Benefits (46.3%) increased .4% while Money Purchase Calculated Benefits (53.7%) decreased .4%
- Core and Variable Fund Benefits (33.1%) increased 2.3% while the Core Fund Only Benefits (66.9%) decreased correspondingly

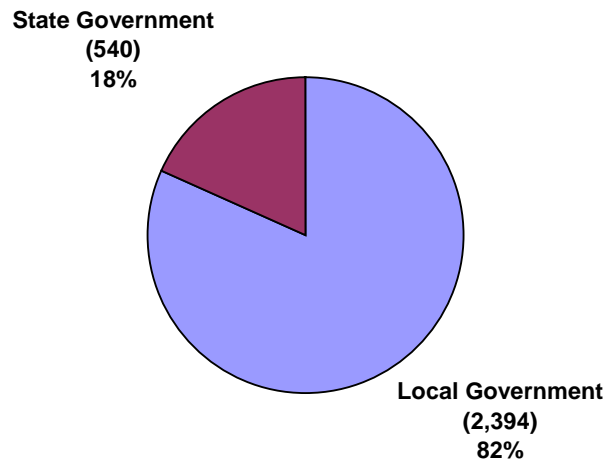


**WRS RETIREMENT ANNUITES
Finalized Annuities
By Employer Type and Annuitant Gender
1ST Quarter 2008**

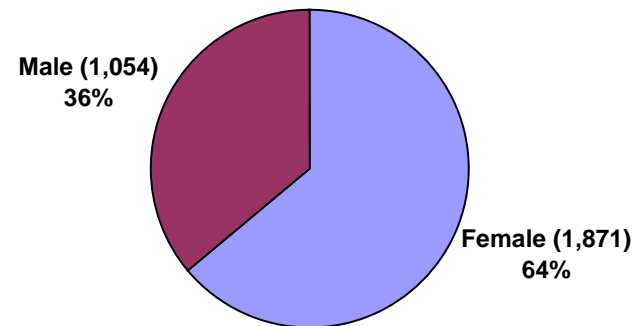
Compared to 2007:

- Local Government Retirees (81.6%) rose significantly, 13.3%, while State Government Retirees (18.4%) dropped 13.3%
- Female Retirees (64.0%) increased 5.6% as Male Retirees (36.0%) declined the same percentage

Employer Type



Annuitant Gender



WRS RETIREMENT & BENEFICIARY ANNUITIES
Retirement Terminations and Beneficiary Information
1ST Quarter 2008

- 13 Retirement Annuity Terminations occurred during the period covering January – March 2008
 - 9 annuitants returned to work and elected to participate in the WRS
 - 2 annuitants cancelled their benefit applications
 - 2 annuitants never terminated and continued employment

- 16 Beneficiary Annuities started during the period covering January – March 2008

- 8 Beneficiary Annuity Terminations occurred during the period covering January – March 2008
 - All 8 beneficiaries converted their annuities to lump sum payments

WRS RETIREMENT & BENEFICIARY ANNUITIES
Annuity Payment Information
1ST Quarter 2008

Gross Annuity Payments by Fund (\$)

Payroll Month	Core	Variable	Subtotal	General Purpose Revenue	Total
Jan-08	260,698,859.64	36,242,661.83	296,941,521.47	107,204.21	297,048,725.68
Feb-08	261,226,863.67	36,186,141.58	297,413,005.25	103,352.41	297,516,357.66
Mar-08	260,916,393.26	36,129,653.29	297,046,046.55	102,340.32	297,148,386.87

Gross Annuity Payments by Method of Payment (\$)

Payroll Month	ACH - Electronic Transfer	Paper Check	Deductions	Accts Receivable	Total
Jan-08	224,338,481.06	25,773,342.88	47,388,204.89	(451,303.15)	297,048,725.68
Feb-08	225,804,735.73	24,880,894.06	47,598,492.89	(767,765.02)	297,516,357.66
Mar-08	225,802,834.11	24,345,980.07	47,713,959.93	(714,387.24)	297,148,386.87

Number of Annuitants Paid

Payroll Month	Annuitants Paid by ACH		Annuitants Paid by Check		Total Annuitants Paid
Jan-08	123,153	86.77%	18,780	13.23%	141,933
Feb-08	123,909	87.17%	18,233	12.83%	142,142
Mar-08	124,169	87.30%	18,064	12.70%	142,233