

# 2014 Annual Disability Statistics

Joint Meeting of the Employee Trust Funds,  
Teachers Retirement, and  
Wisconsin Retirement Boards

Deb Roemer, Director  
Disability Programs Bureau

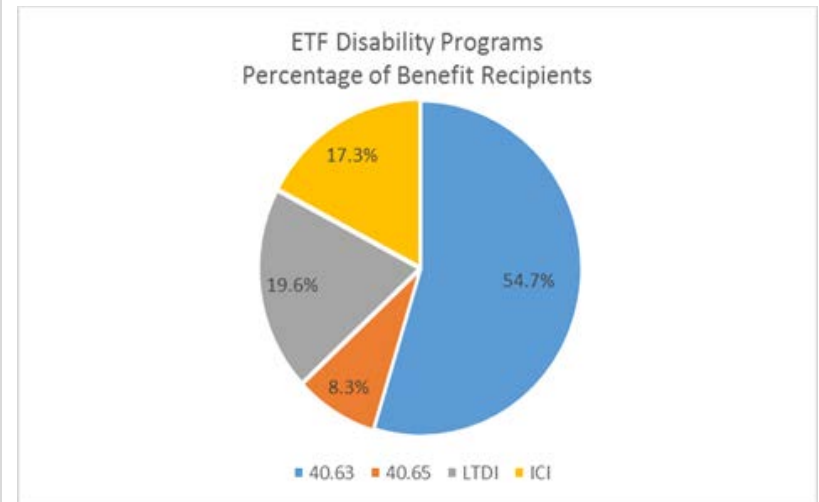
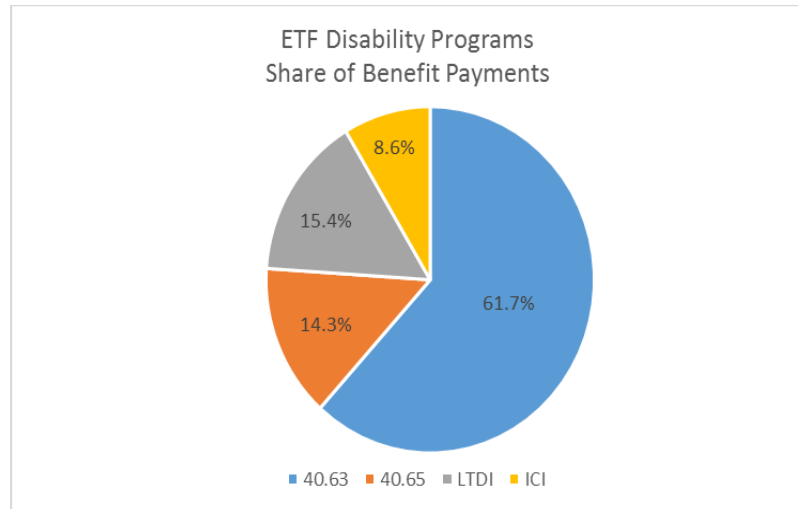
April 2, 2015



# 2014 Disability Statistical Report

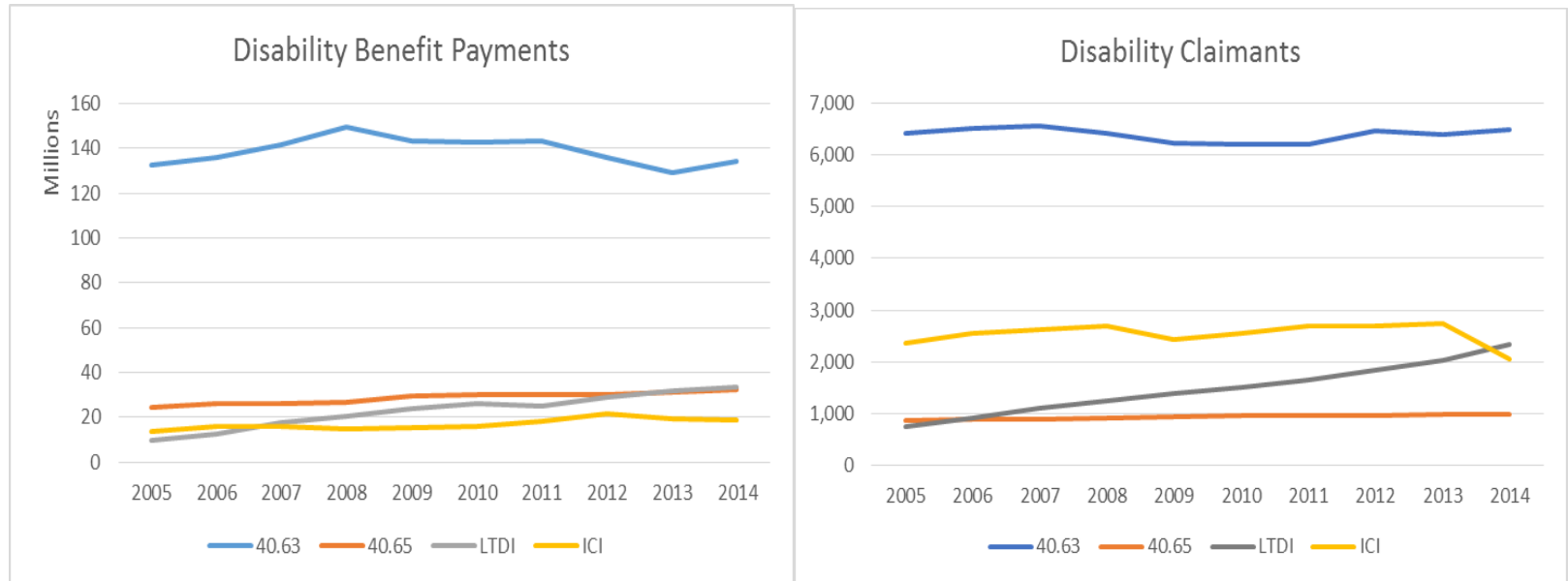
- Revised report format
- More holistic approach to presenting and evaluating disability benefit information
- Making information more useful by:
  - Providing multi-year information instead of making prior year comparisons
  - Providing comparisons among disability programs including LTDI and ICI programs

# ETF Disability Programs



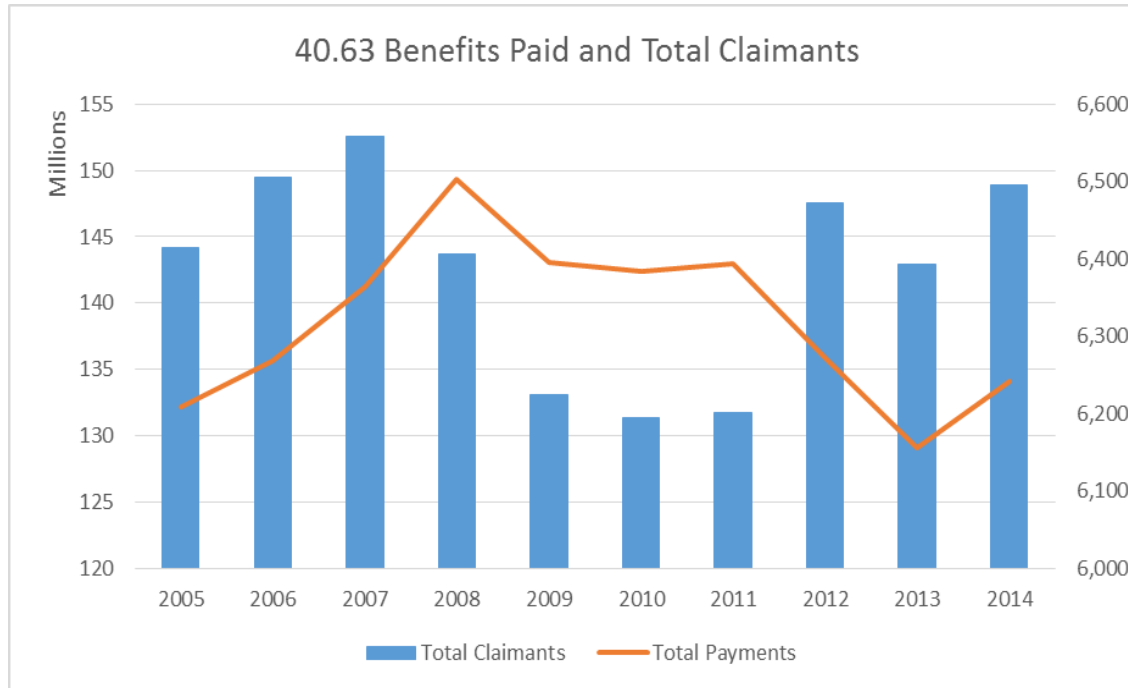
- Four disability programs
  - Disability Annuities, Duty Disability, Long-Term Disability Insurance, Income Continuation Insurance
  - \$217.3 million in annual benefit payments
  - 11,871 separate claims
- Disability Annuity program (40.63) constitutes more than half of all benefit payments and claims.

# ETF Disability Programs



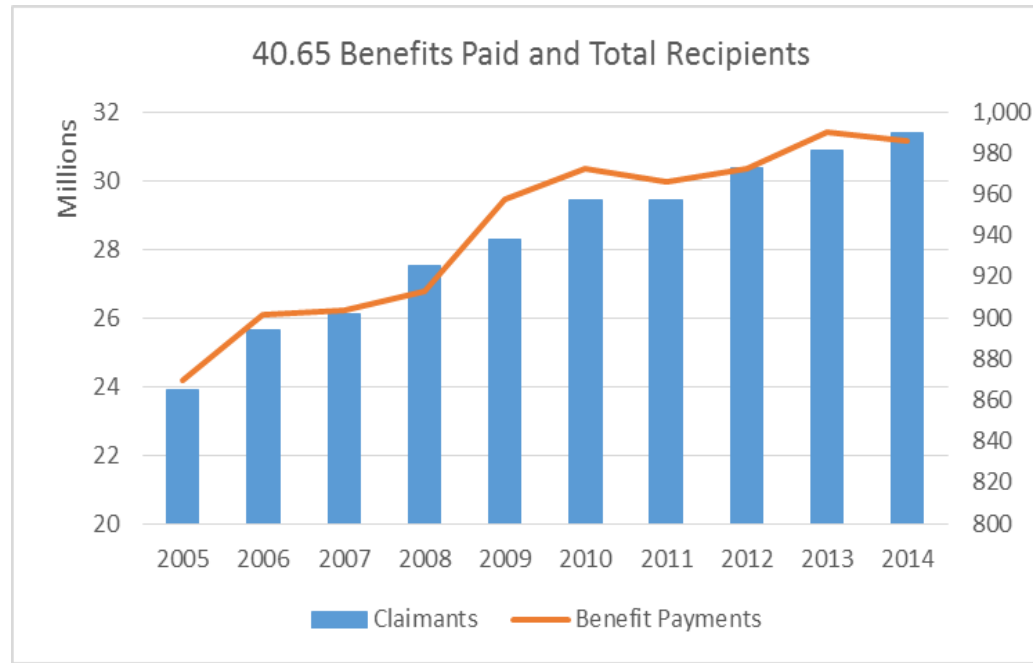
- 40.63 benefit payments and annuitants account for more than other 3 programs combined
- 40.63 is only program with declines in payments and annuitants. All other programs showing growth

# 40.63 Disability Annuities



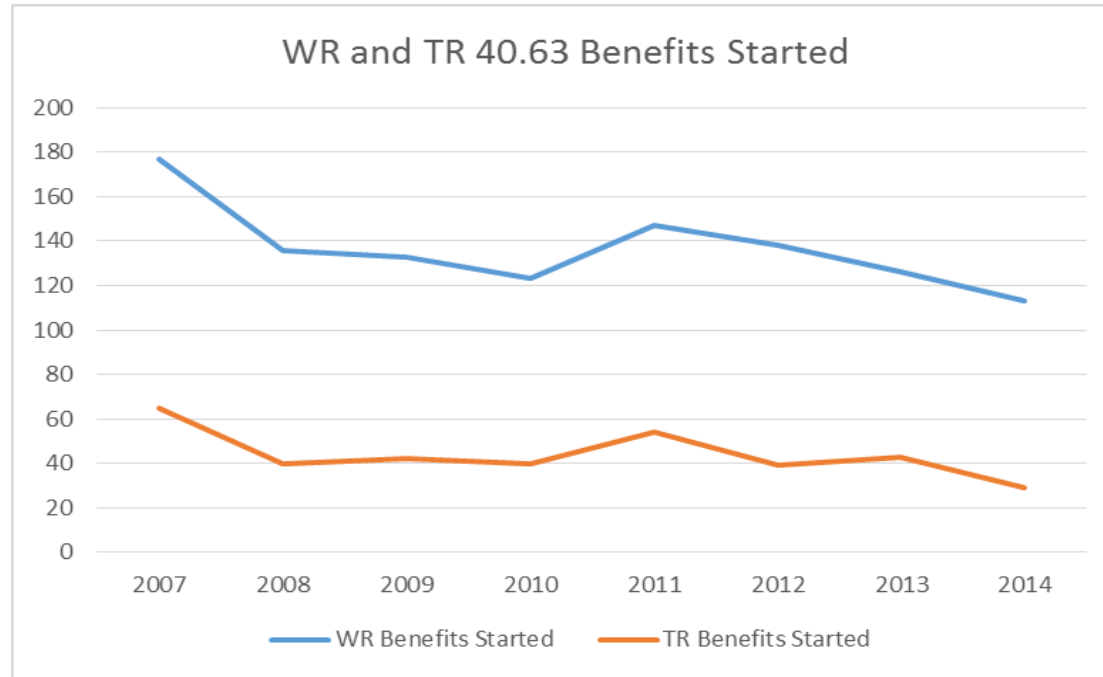
- Gradual decline in benefit payments and total annuitants
- Recent declines in annual core fund dividend has also contributed to benefit declines

# 40.65 Duty Disability



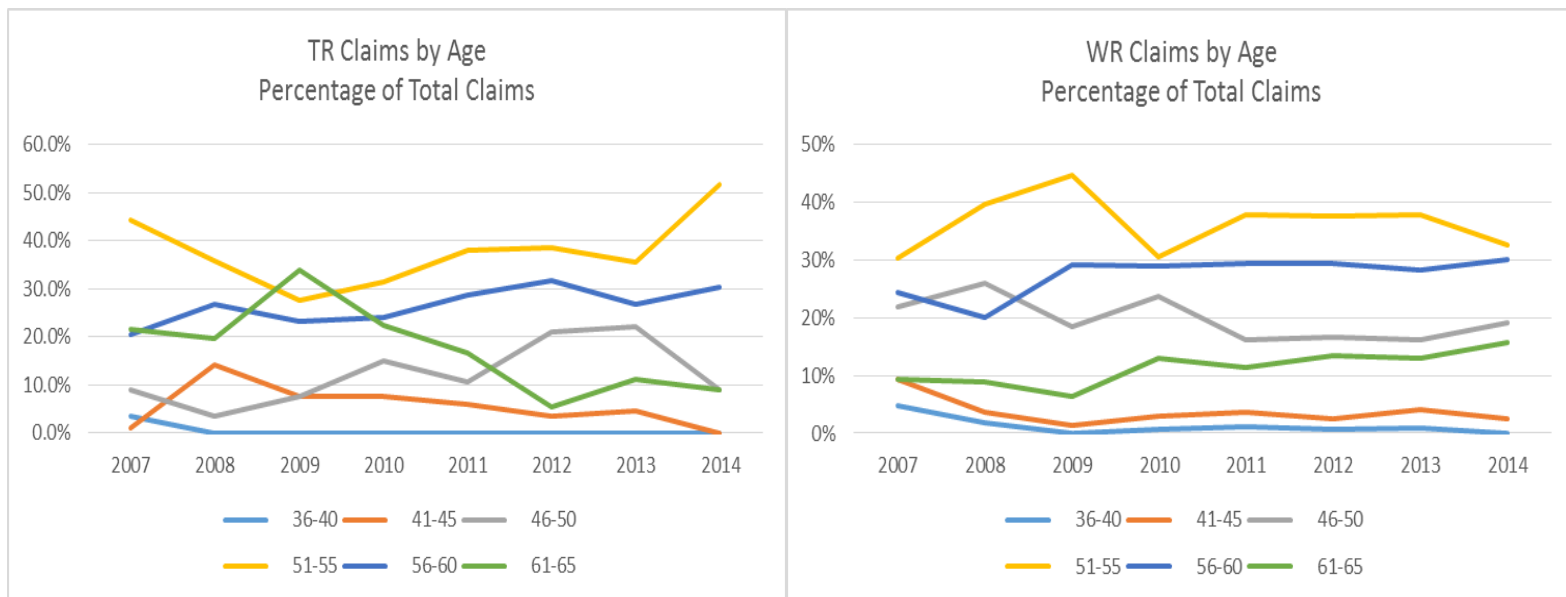
- \$31.1 million in benefit payments
- 990 recipients as of December 31, 2014
- Average benefit after offsets: \$2,702/month

# 40.63 Disability Annuities



- Both TR and WR approved benefits are declining annually

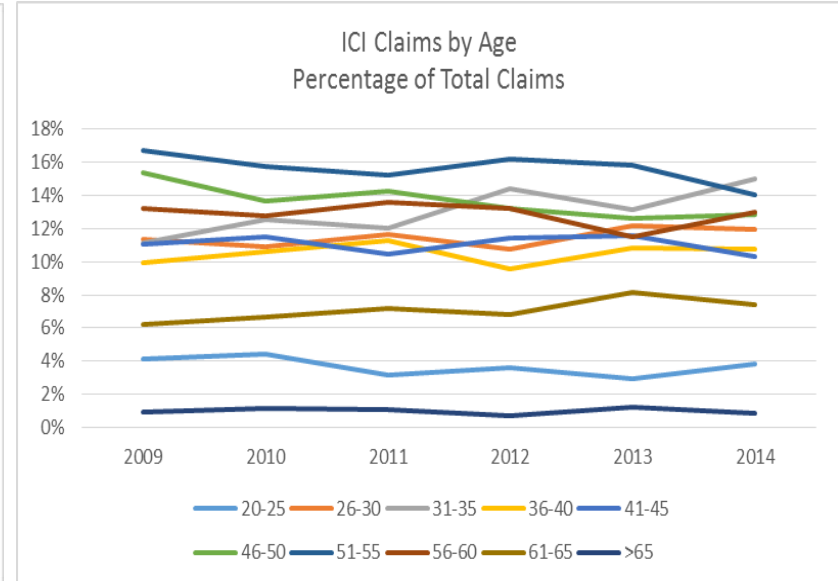
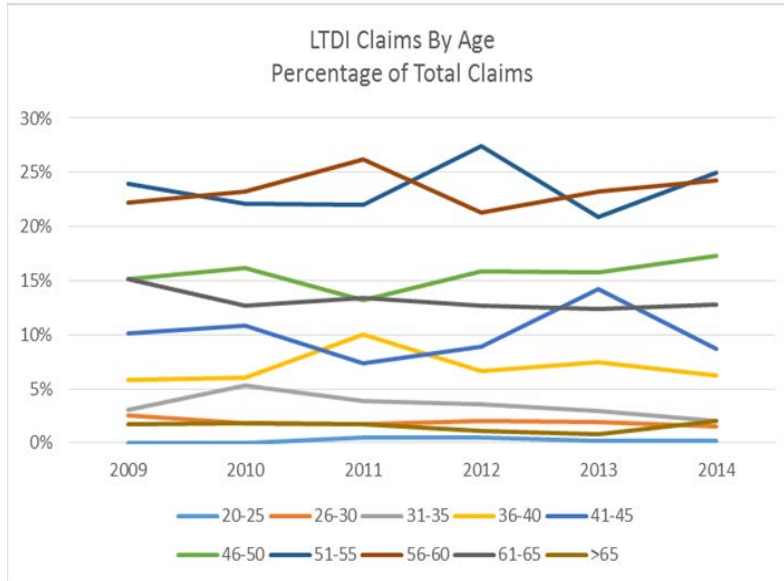
# Disability Claims by Age



- 40.63 claims are primarily in 51-60 age range
- Fewer employees remain eligible for the 40.63 benefit
- The number of claims for older employees are increasing

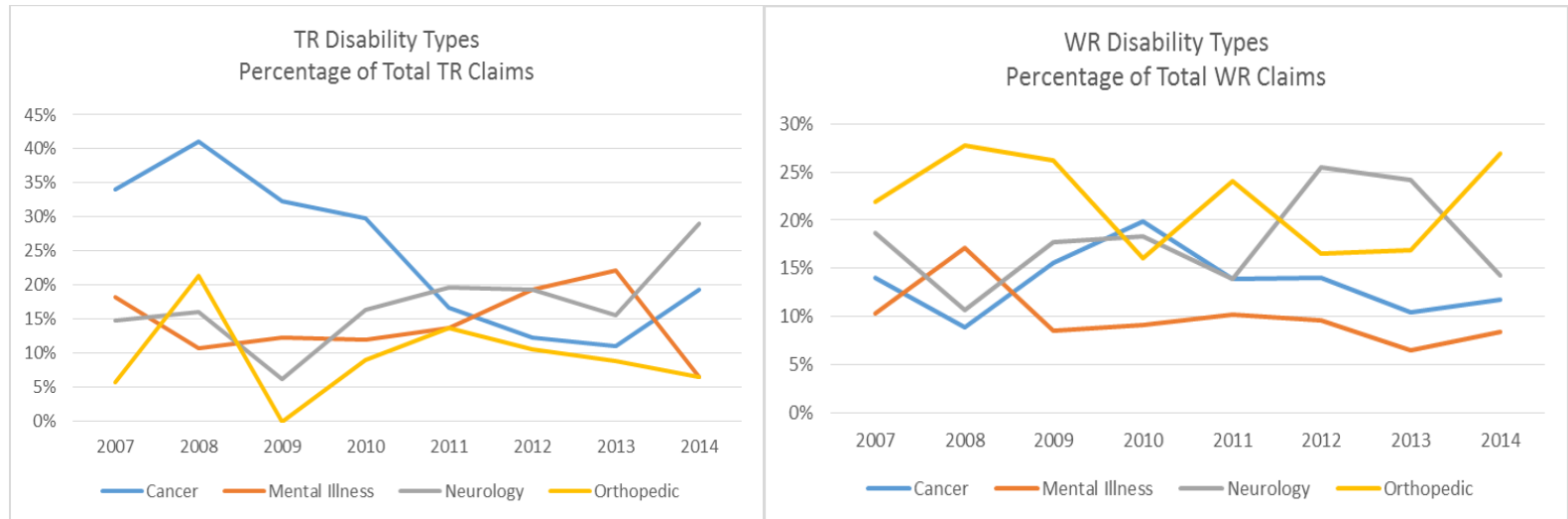


# Disability Claims by Age



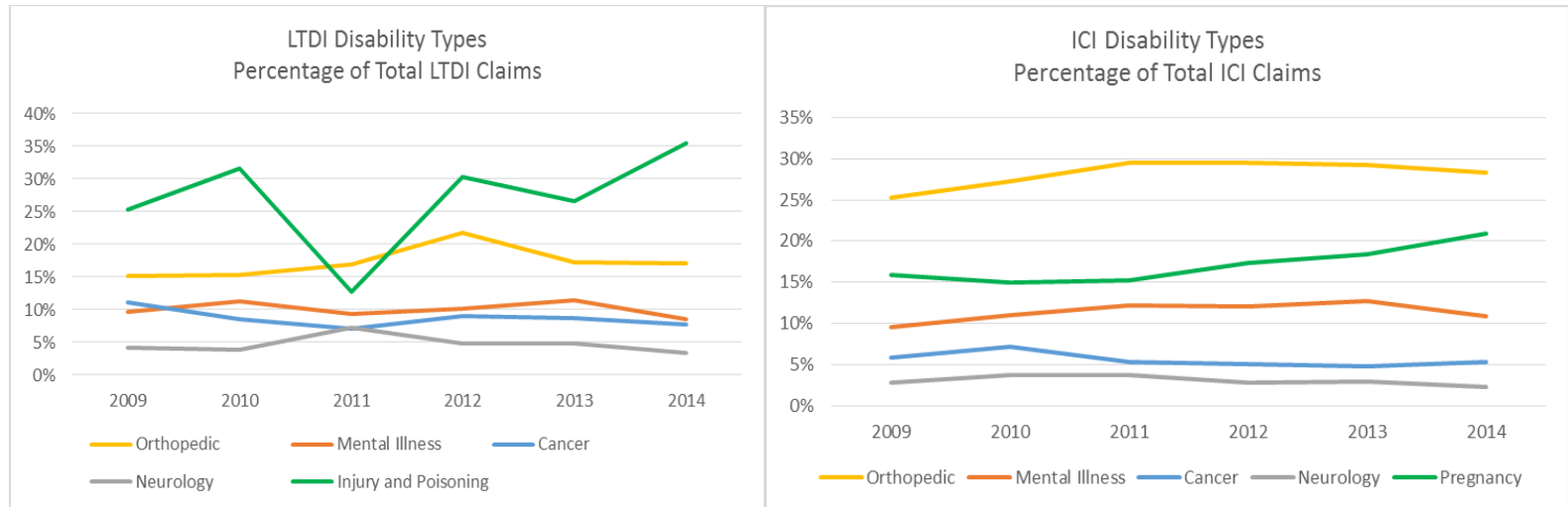
- ICI and LTDI Claims show broader age distribution
- ICI short-term component (48-50% of total benefits)
- Employees hired after 1992 cannot receive 40.63 benefits

# Disability Types



- Disability types can fluctuate from year to year
  - TR claims for mental illness 22% in 2013, 6% in 2014
- TR Board Claims
  - Neurology and mental illness are trending upwards
  - Cancer claims have been trending downward since 2008
- WR Board Claims
  - Orthopedic and neurology currently the greatest percentage of all claims
  - Cancer claims and mental illness claims have been declining

# Disability Types



- Orthopedic claims for LTDI and ICI are trending upward.
- Mental illness claims for ICI are also trending upward.
- Mental illness claims for LTDI are trending downward.
- Cancer and neurology claims are trending downward.
- Prevalent disability type in LTDI: Injury and Poisoning.
- Orthopedic claims are most prevalent in ICI; pregnancy and perinatal claims are second.
  - Indicator of short-term component of ICI

Questions?