



STATE OF WISCONSIN
Department of Employee Trust Funds
Robert J. Conlin
SECRETARY

801 W Badger Road
PO Box 7931
Madison WI 53707-7931

1-877-533-5020 (toll free)
Fax (608) 267-4549
<http://etf.wi.gov>

CORRESPONDENCE MEMORANDUM

DATE: February 6, 2013
TO: Teachers Retirement Board
Wisconsin Retirement Board
FROM: Deb Roemer, Director
Disability Programs Bureau
Division of Insurance Services
SUBJECT: October-December 2012 Quarterly Disability Annuity Statistics

This memo is for informational purposes only. No Board action is required.

Attached is the Wisconsin Retirement System (WRS) *Disability Benefit Annuity Statistical Report* for October through December 2012. The report provides quarterly data on: number of annuities started, options selected, gender, determination, age, and disability type.

TRENDS

The trends, when compared to the same quarter over the past five years, are as follows:

- The number of new disability annuities under the Teachers Retirement Board (TR) is much lower. TR Board had 6 under its jurisdiction, compared to an average of 13; the number of new disability annuities under the Wisconsin Retirement Board (WR) was higher, with 42 under its jurisdiction, compared to an average of 34.8.
- The most-selected annuity options under TR and WR jurisdiction were "100% Continued to Named Survivor (Joint Survivor) with 180 Payments Guaranteed."
- For TR Board, females continue to be the predominant user of the \$40.63 Disability Retirement Annuity benefit. For WR Board, males have become the predominant user of the \$40.63 Disability Retirement Annuity benefit.
- The majority of TR and WR applications are approved; less than 1% are denied.
- The predominant age group for TR and WR Board is 51-55.
- The prevalent disability types for TR Board annuities for this quarter in the last five years are: neurology, mental illness, and cancer and multiple medical problems. For WR Board annuities, the prevalent disability types are: neurology, orthopedic, and cancer.

Reviewed and approved by Lisa Ellinger, Administrator, Div. of Insurance Services

Electronically Signed 2/19/13

Board	Mtg Date	Item #
TR	3.7.11	5A1
WR	3.7.11	5A1

PRIORITIES

The top priority for the Disability Programs Bureau is to approve disability benefits as quickly as possible so individuals are not without income. Approving a disability benefit requires follow-up with the applicant, employer, and health care providers. An application can take up to a year to process, however many are completed in two to three months. The second priority is to maintain existing disability accounts. This requires obtaining the necessary medical and income information.

We would appreciate any feedback that you may offer for improving this report. Please contact me at (608) 266-5387 or deb.roemer@etf.wi.gov if you have comments or questions.

Attachment: Disability Benefit Annuity Statistical Report

**STATE OF WISCONSIN
DEPARTMENT OF EMPLOYEE TRUST FUNDS**

**WISCONSIN RETIREMENT SYSTEM (WRS)
DISABILITY BENEFIT ANNUITY STATISTICAL REPORT
OCTOBER - DECEMBER 2012**

This report provides a summary of disability information for the Board's review. Department staff have reviewed and made the following recommendations on initial disability applications submitted by participants. Staff review individual participant applications on an ongoing basis to determine if disability benefits can continue. If you have questions or would like additional information regarding disability benefits, please contact Deb Roemer at (608) 266-5387 or deb.roemer@etf.wi.gov.

The following key describes the type of disability determinations made by ETF staff:

Approved – Disability applications that meet the service, medical and employer criteria required under Wis. Stat. § 40.63 (1) and (4), are approved and processed for benefit payments.

Cancelled – Disability applications that are incomplete within one year after the Department receives the disability application are cancelled. Applications are considered incomplete if the Department has not received the required medical certification and/or employer statement.

Deemed Approved – Disability applications are deemed approved if the applicant meets the service requirement and the Department receives a valid disability application and one *Medical Report* certifying the applicant's disability prior to the applicant's death. The employer is also required to submit an Employer Statement.

Denial – Disability applications are denied if the applicant does not meet all of the statutory requirements (service, medical and employer statement).

Denial Rescinded: Approved – Disability applications that were initially denied because the applicant did not meet the statutory requirements. The denial has since been overturned and the application approved due to receipt of additional information or as determined by the appropriate Board.

Termed – Disability applications that were initially approved and benefit payments made may be terminated if the Department receives information from a physician certifying that the individual no longer meets the medical definition for a disability or the individual does not comply with requests for medical or financial information.

Termed Rescinded: Approved – Disability applications that were initially approved, but the annual medical recertification was completed indicating that the individual was no longer disabled or the individual did not comply with medical or financial requests. The termination may be rescinded upon receipt of a certifying medical report, financial information, or based on an appeal determination.

Withdrawn/Void/Invalid – Disability applications are withdrawn at the request of the applicant. This occurs most often when an applicant returns to active employment and no longer meets the statutory requirements for a disability benefit.

§ 40.63 Waiver – Disability application is submitted and there is a Long-Term Disability Insurance (LTDI) election form that waives all rights to benefits under Wisconsin statutes § 40.63 for a WRS disability retirement benefit.

WRS DISABILITY BENEFITS				
	Oct	Nov	Dec	Total
Disability Estimates Requested	65	30	34	129
Disability Estimates Completed	62	48	35	145
Disability Annuities Started (on payroll)	Oct	Nov	Dec	Total
Teachers Retirement Board § 40.63	3	3	0	6
Wisconsin Retirement Board § 40.63	22	10	10	42
§ 40.65 Duty Disability (WR Board)	0	4	2	6
Total Annuities Started	25	17	12	54

**STATE OF WISCONSIN
DEPARTMENT OF EMPLOYEE TRUST FUNDS**

**WISCONSIN RETIREMENT SYSTEM (WRS)
DISABILITY BENEFIT ANNUITY STATISTICAL REPORT
OCTOBER - DECEMBER 2012**

TEACHERS BOARD DISABILITY ANNUITIES STARTED BY OPTION SELECTED				
Option	Oct	Nov	Dec	Total
100% Continued to Named Survivor (Joint Survivor) with 180 Payments Guaranteed	2	2	0	4
Life Annuity with 60 Payments Guaranteed For Annuitant's Life Only	0	1	0	1
Life Annuity with 180 Payments Guaranteed	0	0	0	0
75% Continued to Named Survivor (Joint Survivor)	0	0	0	0
100% Continued to Named Survivor (Joint Survivor)	1	0	0	1
75% Continued to Annuitant or Named Survivor (Joint Survivor) Upon Death of Either	0	0	0	0
TOTAL	3	3	0	6

TEACHERS BOARD DISABILITY ANNUITIES STARTED BY GENDER					
§ 40.63 Disability Benefits by Gender	% Pop.*	Oct	Nov	Dec	% of Total
Females	68%	3	2	0	83%
Males	32%	0	1	0	17%
TOTAL	100%	3	3	0	100%

*Active and inactive Teacher's Retirement Board population as of 12/31/11 for 2012

TEACHERS BOARD DISABILITY STATISTICS FOR APPLICATIONS SUBMITTED

TEACHERS BOARD DISABILITY APPLICATIONS SUBMITTED BY DETERMINATION				
Type of Determination	Oct	Nov	Dec	Total
Approved	3	0	3	6
Cancelled	0	0	0	0
Deemed Approved	0	0	0	0
Denial	0	0	0	0
Denial Rescinded: Approved	0	0	0	0
Termed	0	0	0	0
Termed Rescinded: Approved	0	0	0	0
Void/Withdrawn/Invalid	0	0	0	0
§ 40.63 Waiver	0	0	0	0
TOTAL	3	0	3	6

TEACHERS BOARD DISABILITY APPLICATIONS SUBMITTED BY AGE				
§ 40.63 Disability Benefits by Age	Oct	Nov	Dec	Total
20-25	0	0	0	0
26-30	0	0	0	0
31-35	0	0	0	0
36-40	0	0	0	0
41-45	0	0	0	0
46-50	1	0	0	1
51-55	0	0	2	2
56-60	2	0	1	3
61-65	0	0	0	0
TOTAL	3	0	3	6

**STATE OF WISCONSIN
DEPARTMENT OF EMPLOYEE TRUST FUNDS**

**WISCONSIN RETIREMENT SYSTEM (WRS)
DISABILITY BENEFIT ANNUITY STATISTICAL REPORT
OCTOBER - DECEMBER 2012**

TEACHERS BOARD DISABILITY APPLICATIONS SUBMITTED BY DISABILITY TYPE				
Disability Type	Oct	Nov	Dec	Total
Brain Injury	0	0	0	0
Cancer	0	0	1	1
Cardiovascular	1	0	0	1
Chronic Fatigue	0	0	0	0
Diabetes	0	0	0	0
Eye Disorders	0	0	0	0
Gastro/Intestinal	0	0	0	0
Hearing Disorder	0	0	0	0
Mental Illness	0	0	1	1
Multiple Medical Problems	1	0	0	1
Multiple Sclerosis	1	0	0	1
Muscle/Tissue	0	0	1	1
Nephrology	0	0	0	0
Neurology	0	0	0	0
Orthopedic	0	0	0	0
Other	0	0	0	0
Reflex Sympathetic Dystrophy (RSD)	0	0	0	0
Respiratory	0	0	0	0
Unknown	0	0	0	0
TOTAL	3	0	3	6

**STATE OF WISCONSIN
DEPARTMENT OF EMPLOYEE TRUST FUNDS**

**WISCONSIN RETIREMENT SYSTEM (WRS)
DISABILITY BENEFIT ANNUITY STATISTICAL REPORT
OCTOBER - DECEMBER 2012**

WI RETIREMENT BOARD DISABILITY ANNUITIES STARTED BY OPTION SELECTED				
Option	Oct	Nov	Dec	Total
100% Continued to Named Survivor (Joint Survivor) with 180 Payments Guaranteed	13	2	4	19
Life Annuity with 60 Payments Guaranteed For Annuitant's Life Only	1	0	1	2
Life Annuity with 180 Payments Guaranteed	2	2	2	6
75% Continued to Named Survivor (Joint Survivor)	2	3	2	7
100% Continued to Named Survivor (Joint Survivor)	1	3	1	5
75% Continued to Annuitant or Named Survivor (Joint Survivor) Upon Death of Either	2	0	0	2
TOTAL	22	10	10	42

WI RETIREMENT BOARD DISABILITY ANNUITIES STARTED BY GENDER					
§ 40.63 Disability Benefits by Gender	% Pop.*	Oct	Nov	Dec	% of Total
Females	62%	9	7	5	50%
Males	38%	13	3	5	50%
TOTAL	100%	22	10	10	100%

* Active and inactive WR population as of 12/31/2011 for 2012

WI RETIREMENT BOARD DISABILITY STATISTICS FOR APPLICATIONS SUBMITTED

WI RETIREMENT BOARD DISABILITY APPLICATIONS SUBMITTED BY DETERMINATION				
Type of Determination	Oct	Nov	Dec	Total
Approved	8	10	10	28
Cancelled	0	1	0	1
Deemed Approved	0	0	0	0
Denial	0	0	1	1
Denial Rescinded: Approved	0	0	0	0
Other	0	0	0	0
Termed	0	0	0	0
Term. Rescinded: Approved	0	0	0	0
Void/Withdrawn/Invalid	1	1	0	2
§ 40.63 Waiver	0	0	0	0
TOTAL	9	12	11	32

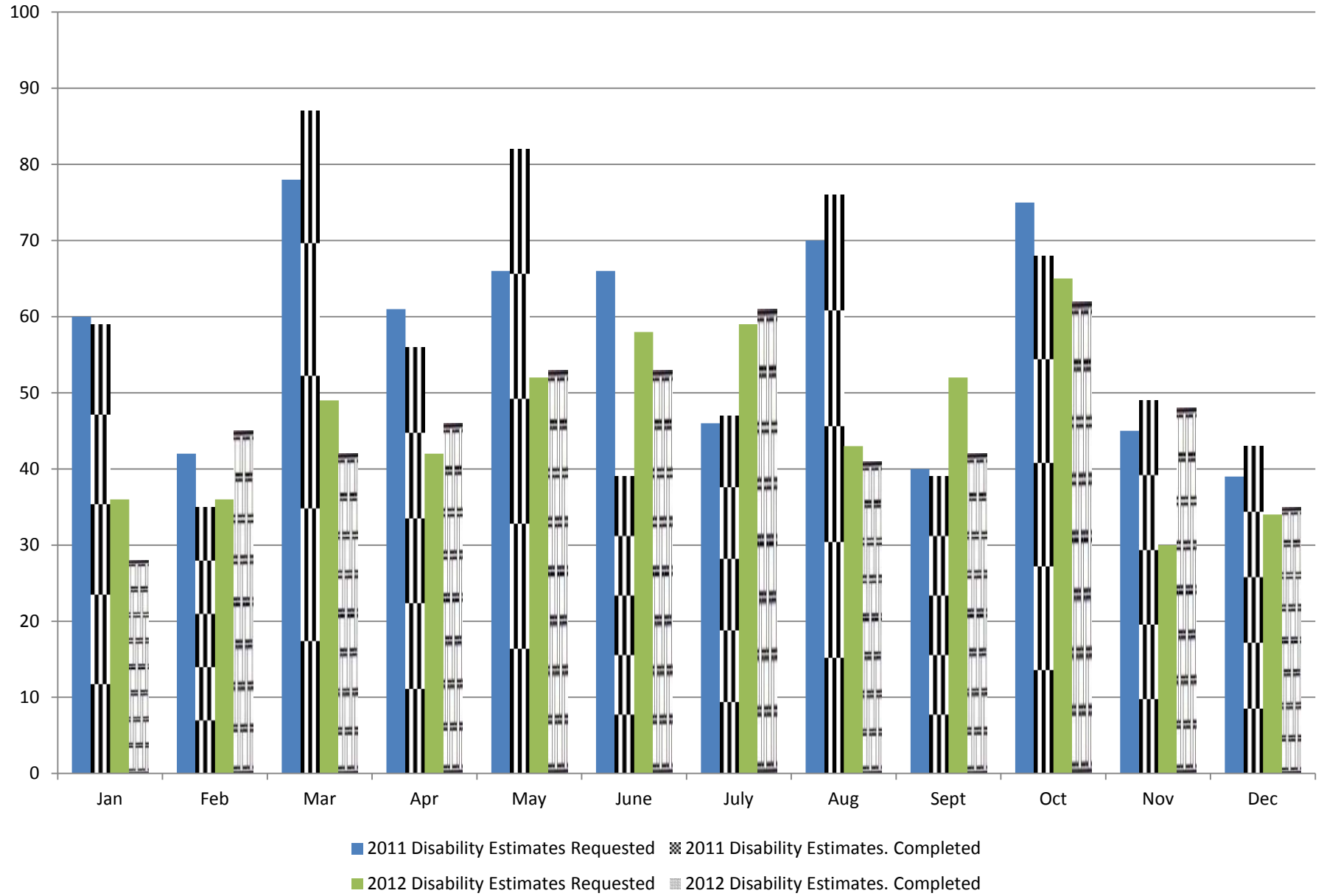
**STATE OF WISCONSIN
DEPARTMENT OF EMPLOYEE TRUST FUNDS**

**WISCONSIN RETIREMENT SYSTEM (WRS)
DISABILITY BENEFIT ANNUITY STATISTICAL REPORT
OCTOBER - DECEMBER 2012**

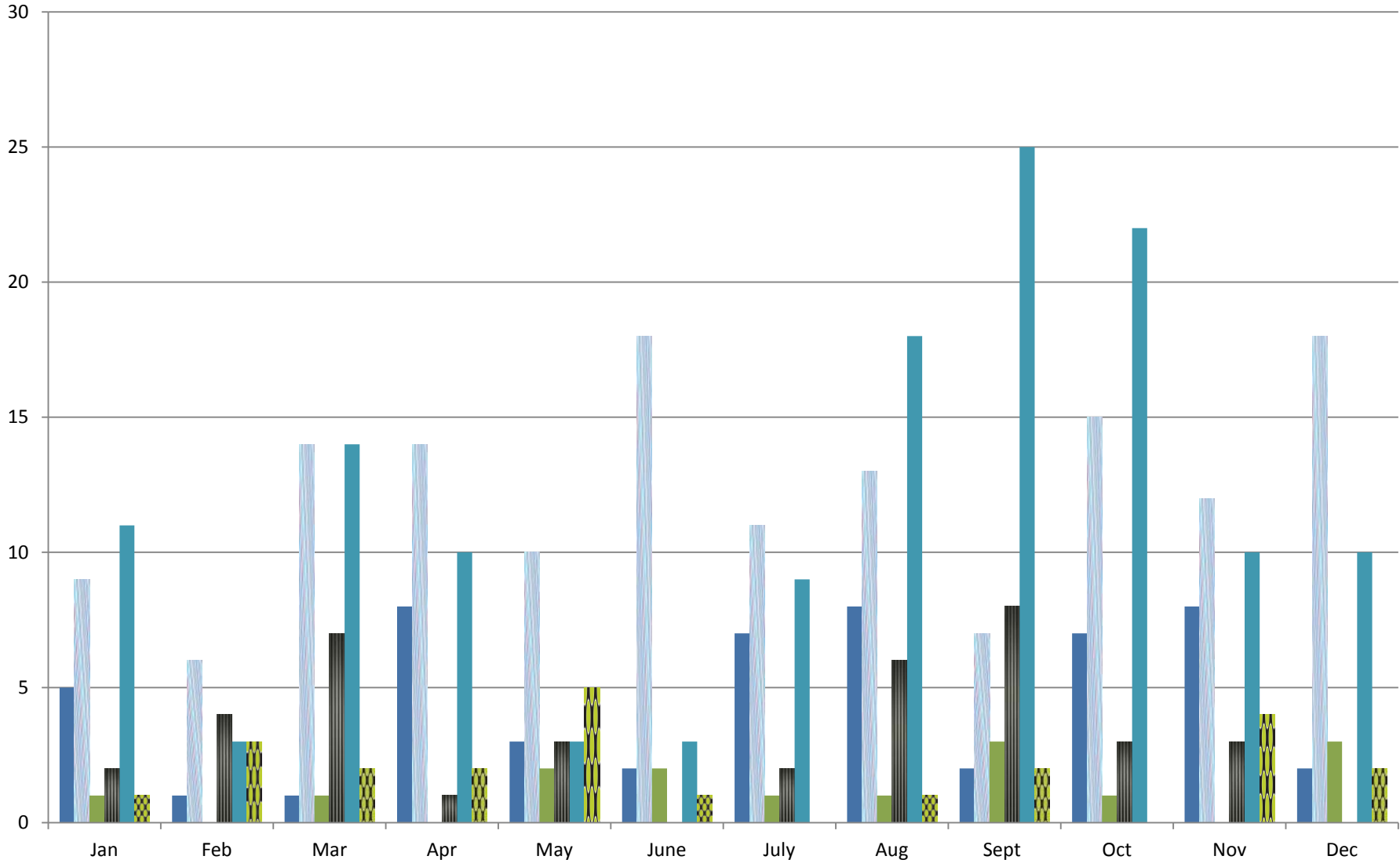
WI RETIREMENT BOARD DISABILITY APPLICATIONS SUBMITTED BY AGE				
§ 40.63 Disability Benefits by Age	Oct	Nov	Dec	Total
20-25	0	0	0	0
26-30	0	0	0	0
31-35	0	0	0	0
36-40	0	0	0	0
41-45	2	0	0	2
46-50	0	1	3	4
51-55	4	7	3	14
56-60	2	1	2	5
61-65	1	3	3	7
TOTAL	9	12	11	32

WI RETIREMENT BOARD DISABILITY DETERMINATIONS				
Disability Type	Oct	Nov	Dec	Total
Brain Injury	1	0	0	1
Cancer	0	3	2	5
Cardiovascular	0	0	2	2
Chemical Dependency	0	0	0	0
Diabetes	0	0	0	0
Eye Disorders	0	0	0	0
Gastro/Intestinal	0	0	0	0
Hearing Disorders	0	0	0	0
Mental Illness	2	1	1	4
Multiple Medical Problems	0	2	0	2
Multiple Sclerosis	1	0	0	1
Muscle/Tissue	1	1	1	3
Nephrology	0	1	0	1
Neurology	2	2	1	5
Orthopedic	2	0	4	6
Other	0	1	0	1
Reflex Sympathetic Dystrophy (RSD)	0	0	0	0
Respiratory	0	1	0	1
Unknown	0	0	0	0
TOTAL	9	12	11	32

2012 v. 2011 Disability Estimates Requested & Completed



Disability Annuities Started 2012 v. 2011



■ 2011 Teachers Retirement Board § 40.63
 ■ 2011 Wisconsin Retirement Board § 40.63
 ■ 2011 § 40.65 Duty Disability
■ 2012 Teachers Retirement Board § 40.63
 ■ 2012 Wisconsin Retirement Board § 40.63
 ■ 2012 § 40.65 Duty Disability