



Supplemental Benefits

Virtual Benefit Session for Members



Tech Check



Can you see the presentation?



Can you hear the moderator?

Welcome

- Supplemental Benefits – Session 2 of 4
 - *Friday, October 2*
 - *Wednesday, October 7*
 - Tuesday, October 13 ◀
 - Wednesday, October 21
- Visit etf.wi.gov to view other [health benefit forums](#) and [educational opportunities](#)

This session will be recorded for records retention purposes, but will not be shared publicly

Agenda

- Ground Rules & Introductions
- Supplemental Benefits 2021 Overview
 - Accident Plan
 - Long-Term Care
 - Pre-Tax Savings Accounts
- Q&A Session
- Member Resources

This session will be recorded for records retention purposes, but will not be shared publicly

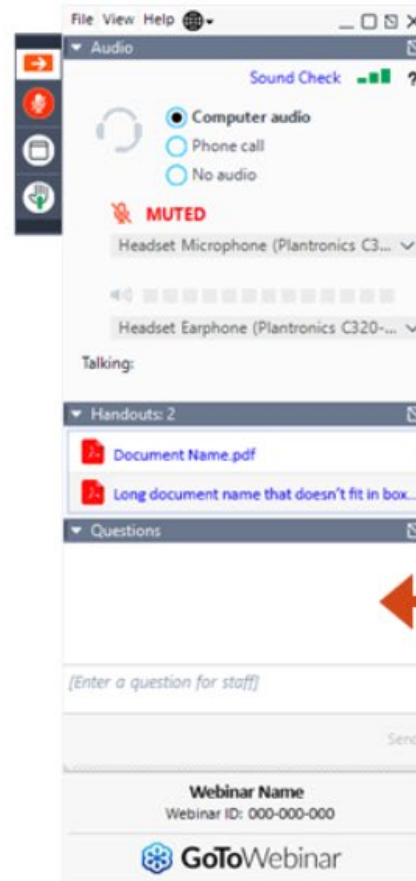
Ground Rules

- Please mute yourself
 - Only the moderator(s) and panelists will engage in active discussion, and will be muted when not actively speaking
- Enter all questions via the chat function
 - All general benefits-related questions are welcome
 - No personally identifiable information (PII) or protected health information (PHI) allowed

How to Participate

Click orange arrow to make the dashboard bigger.

You will be muted for the entire webinar.



Type questions any time during the presentation.

Introductions

Moderator

- Sara Brockman, Communications Manager

Office of Strategic Health Policy Panelists

- Tom Rasmussen, Life Insurance & Dental Benefits Program Manager
- Tricia Sieg, Pharmacy Benefits Program Manager
- Xiong Vang, HSA & ERA Accounts Program Manager
- Douglas Wendt, Health Policy Advisor & Supplemental Programs Manager

Supplemental Benefits

- Accident Plan Update
- Long-Term Care
- New Supplemental Benefit Options for Local Employers



Long-Term Care



New enrollments for state employees and retirees allowed year-round



Current participants can keep their plan, no action required



See [ETF website](#) for more details

State Only
Subject to Underwriting

Long-Term Care



Each member's policy is individually underwritten



Premiums are based on each member's age, gender, and health at time of enrollment



You can choose from a range of coverage options

State Only
Subject to Underwriting

Questions About the Long-Term Care?



Mutual of Omaha Long-Term Care Insurance
Administered by HealthChoice

1-800-833-5823

Accident Plan

- Provides a cash payment to help cover out-of-pocket expenses, regardless of health insurance coverage
 - Concussions
 - ER Treatment
 - Fractures
 - Hospitalization
 - Surgeries
 - X-Rays
- Accidental death and dismemberment (AD&D) payment amount has been increased for members up to \$100,000
- Portable account; enrollment may be continued until age 70

Active Employees Only

UW Hospital & Clinics Employees: Not eligible for this plan

New Benefit Options – Local Employers

- If an employer opts in, local members may be eligible for two new supplemental benefits effective January 1, 2021:



Accident Plan

- Available to active local employees



Vision

- Available to active local employees and retirees

Locals Only

Local Health Plans Supplemental Options

- New for 2021 - [searchable web table](#) of local employers
- Central resource for members, employers, and ETF staff

	Preventive	Select	Select Plus	Vision Plan	Accident Plan
Barron County Housing Authority	X				
Bayfield County	X	X	X		
Bay-Lake Regional Planning Commission			X		

Locals Only

Questions About the Accident Plan?



<https://www.LifeBenefits.com/plandesign/WIETF>

1-866-295-8960

Pre-Tax Savings Accounts

- Re-enrollment Requirement
- Limit Increases
- New Eligible Expenses
- UW Parking & Transit Availability

State Only



Re-Enrollment Requirement



Members must re-enroll in Pre-Tax Savings Accounts each year

- Health Care Flexible Spending Account (FSA)
- Limited Purpose Flexible Spending Account (LPFSA)
- Health Savings Account (HSA)
- Dependent Day Care Account
- Parking Account
- Transit Account

State Only



Limit Increases

Program	2020	2021	Change
Health Savings Account			
• Individual Contribution Limit	\$3,550	\$3,600	▲ \$50
• Family Contribution Limit	\$7,100	\$7,200	▲ \$100
Health Care FSA & Limited Purpose FSA			
• Annual Contribution Limit	\$2,700	\$2,750	▲ \$50
• Carryover Limit	\$500 ► \$550	\$550	(▲ \$50)
Parking Account & Transit Account			
• Monthly Contribution Limit	\$265 /month	\$270 /month	▲ \$5

State Only



New Eligible Expenses

- Eligible expenses for HSAs and FSAs now permanently include:
 - Over-the-counter drugs and medicines not prescribed by a doctor (aspirin, cough medicine, decongestants, etc.)
 - Menstrual care products (pads, liners, tampons, etc.)
- See the full list of [eligible expenses](#) on CYC's website

State Only

UW Parking & Transit Availability

- UW System employees may enroll in parking and transit accounts for plan year 2021
- Elections will be effective January 1, 2021



Note: UW Hospital & Clinics recently decided to opt out of offering these accounts in 2021 – materials updated to reflect this change



State Only – UW System Employees

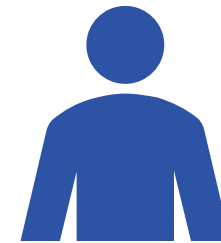
Questions About Pre-Tax Savings Accounts?



Available 24/7 for
program-specific questions

<https://www.connectyourcare.com/etf>

1-833-881-8158



Active state members
should contact their
benefits specialist for
questions on:

- Eligibility
- Paycheck deductions

Q&A Session

- Please type questions into the chat box
- Questions should be general
- No PII/PHI permitted

Q&A Session – Time to Wrap Up



We have time for one last question...

Resources

- Virtual Benefit Fair Alternatives
- Member Resources
- Further Questions

2021 Virtual Benefit Forums



ETF Benefits for Members

- Throughout open enrollment
- 20 total sessions
 - Health Insurance & Pharmacy Benefits for Active Members
 - Health Insurance & Pharmacy Benefits for Retirees
 - Dental & Vision Coverage
 - Wellness Program
 - Supplemental Programs
 - Pre-Tax Savings Accounts, Accident Program, Life Insurance



Benefit Vendors for Members

- Throughout open enrollment
- 30 total sessions
 - 2 sessions per vendor



- Registration required via ETF website
- No PII/PHI permitted
- See [ETF website](#) for session details

2021 Virtual Benefit Forums



Benefit Vendors for Members

- [Meet ConnectYourCare](#)
 - Monday, October 19 – 3 to 4 PM
- [Meet Securian](#)
 - Friday, October 9 – 8 to 9 AM
 - Tuesday, October 20 – 3 to 4 PM

Member Resources

- ETF website
 - New Health landing page – etf.wi.gov/health
- Important Changes for 2021
 - [State employees](#)
 - [Local employees](#) – same for all Local Program Options
 - See meeting materials for PDF versions
- [Health Plan and Vendor contact information](#)
- [2021 Decision Guides](#)

Further Questions



If you have additional questions following today's session, you can contact:

- Contact the [vendor](#), or
- An ETF benefits specialist at 1-877-533-5020
7:00 a.m. to 5:00 p.m. (CDT) / Monday – Friday

Evaluation Survey



You will receive an evaluation survey following this session – please take a few minutes to complete the survey



Thank You!

