



# Wellness

Virtual Benefit Session for Members



# Tech Check

---



Can you see the presentation?



Can you hear the moderator?

# Welcome

---

- Wellness – Session 3 of 4
  - *Friday, October 2*
  - *Tuesday, October 6*
  - *Friday, October 16* ◀
  - *Thursday, October 22*
- Visit [etf.wi.gov](http://etf.wi.gov) to view other [health benefit forums](#) and [educational opportunities](#)

*This session will be recorded for records retention purposes, but will not be shared publicly*

# Agenda

---

- Ground Rules & Introductions
- Wellness 2021 Overview
- Q&A Session
- Member Resources

*This session will be recorded for records retention purposes, but will not be shared publicly*

# Ground Rules

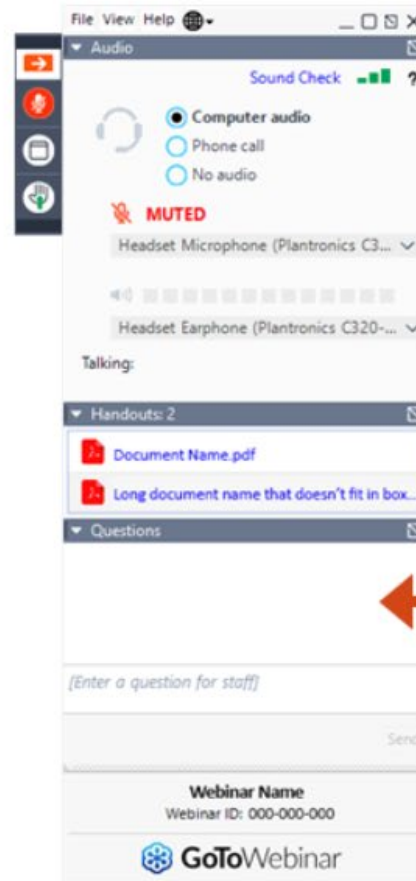
---

- Please mute yourself
  - Only the moderator(s) and panelists will engage in active discussion, and will be muted when not actively speaking
- Enter all questions via the chat function
  - All general benefits-related questions are welcome
  - No personally identifiable information (PII) or protected health information (PHI) allowed

# How to Participate

Click orange arrow to make the dashboard bigger.

You will be muted for the entire webinar.



Type questions any time during the presentation.

# Introductions

---

## Moderator

- Sara Brockman, Communications Manager (ETF – OSHP)

## Panelists

- Molly Heisterkamp, Disease Management & Wellness Program Manager (ETF – OSHP)
- Kristi Mulcahey, Program Manager (StayWell)

# Wellness

---

- Key Dates & Incentive Overview
- New “Health Check” Activities
- Health-Plan Offered Wellness Incentive Changes
- Silver Sneakers
- WebMD Integration





# Key Dates – Program Year 5

---



1/4/2021  
Launch

10/8/2021  
Incentive Deadline



# 2021 Well Wisconsin Incentive Overview

---

- Earn \$150 incentive by completing 3 activities:



## Health Check Activity (Expanded Options!)

- Dental cleaning
- Health care provider form
- Health coaching call
- Onsite biometric screening



## Health Assessment



## Well-Being Activity



**Note:** At-home test kit approved for 2020 will likely continue for 2021.

# Health-Plan Offered Wellness Incentives

---

- Effective January 1, 2021, UnitedHealthcare is the only health plan that may offer financial wellness incentives to members
  - Members enrolled in Medicare Advantage through UnitedHealthcare are not eligible for the \$150 wellness incentive
- All other members (i.e. non-Medicare Advantage) are encouraged to participate in Well Wisconsin and earn the \$150 wellness incentive

# Silver Sneakers

---



Silver Sneakers will still be available to members enrolled in:

- Medicare Advantage with UnitedHealthcare
- Medicare Plus with WEA Trust

# Coming Soon – WebMD Integration

---

- StayWell recently merged with WebMD Health Services
  - Will provide an improved and customized wellness experience
- New tools and resources from WebMD launching in 2021 – including a new web portal experience
  - Each user will need to set up a new web portal account
- More details to come



# Q&A Session

---

- Please type questions into the chat box
- Questions should be general
- No PII/PHI permitted

# Coaching Calls

---

- I work with a health coach that isn't provided through StayWell or the Well Wisconsin program. Does a coaching call with an independent health coach count as an eligible health check toward earning the \$150 wellness incentive?

# Q&A Session – Time to Wrap Up

---



We have time for one last question...



# Resources

---

- Well Wisconsin Program 2021 Video
- Virtual Benefit Fair Alternatives
- Member Resources
- Further Questions



# Well Wisconsin Program 2021 Video

---

- Want to learn more?  
Watch this short [informational video](#) from StayWell about the 2021 Well Wisconsin Program



# 2021 Virtual Benefit Forums

---



## ETF Benefits for Members

- Throughout open enrollment
- 20 total sessions
  - Health Insurance & Pharmacy Benefits for Active Members
  - Health Insurance & Pharmacy Benefits for Retirees
  - Dental & Vision Coverage
  - Wellness Program
  - Supplemental Programs
    - Pre-Tax Savings Accounts, Accident Program, Life Insurance



## Benefit Vendors for Members

- Throughout open enrollment
- 30 total sessions
  - 2 sessions per vendor



- Registration required via ETF website
- No PII/PHI permitted
- See [ETF website](#) for session details

# Member Resources

---

- ETF website
  - New Health landing page – [etf.wi.gov/health](https://etf.wi.gov/health)
- Important Changes for 2021
  - [State employees](#)
  - [Local employees](#) – same for all Local Program Options
  - See meeting materials for PDF versions
- [Health Plan and Vendor contact information](#)
- [2021 Decision Guides](#)

# Further Questions

---



If you have additional questions following today's session, you can contact:

- StayWell at 1-800-821-6591 or [wellwisconsin@staywell.com](mailto:wellwisconsin@staywell.com), or
- An ETF benefits specialist at 1-877-533-5020  
7:00 a.m. to 5:00 p.m. (CDT) / Monday – Friday

# Evaluation Survey

---



You will receive an evaluation survey following this session – please take a few minutes to complete the survey



# Thank You!

