



Wellness

Virtual Benefit Session for Members



Tech Check



Can you see the
presentation?



Can you hear the
moderator?

Welcome

- Wellness – Session 2 of 4
 - *Friday, October 2*
 - Tuesday, October 6 ◀
 - Friday, October 16
 - Thursday, October 22
- Visit etf.wi.gov to view other [health benefit forums](#) and [educational opportunities](#)

This session will be recorded for records retention purposes, but will not be shared publicly

Agenda

- Ground Rules & Introductions
- Wellness 2021 Overview
- Q&A Session
- Member Resources

This session will be recorded for records retention purposes, but will not be shared publicly

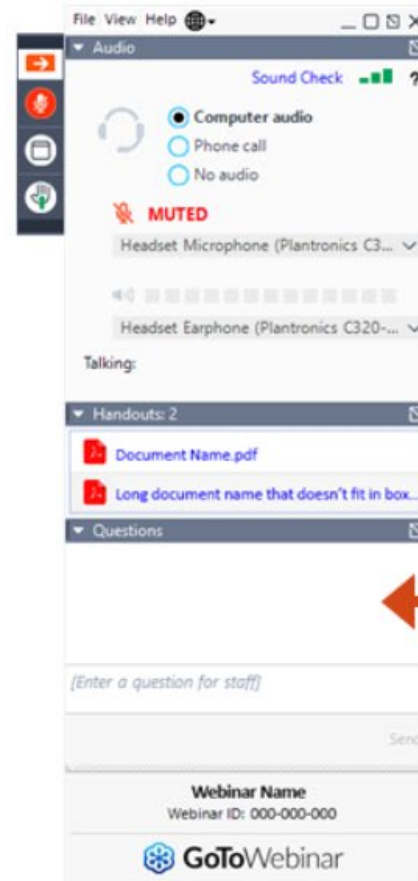
Ground Rules

- Please mute yourself
 - Only the moderator(s) and panelists will engage in active discussion, and will be muted when not actively speaking
- Enter all questions via the chat function
 - All general benefits-related questions are welcome
 - No personally identifiable information (PII) or protected health information (PHI) allowed

How to Participate

Click orange arrow to make the dashboard bigger.

You will be muted for the entire webinar.



Type questions any time during the presentation.

Introductions

Moderator

- Sara Brockman, Communications Manager (ETF – OSHP)

Panelists

- Molly Heisterkamp, Disease Management & Wellness Program Manager (ETF – OSHP)
- Kristi Mulcahey, Program Manager (StayWell)

Wellness

- Key Dates & Incentive Overview
- New “Health Check” Activities
- Health-Plan Offered Wellness Incentive Changes
- Silver Sneakers
- WebMD Integration



Key Dates – Program Year 5



1/4/2021
Launch

10/8/2021
Incentive Deadline



2021 Well Wisconsin Incentive Overview

- Earn \$150 incentive by completing 3 activities:



Health Check Activity (Expanded Options!)

- Dental cleaning
- Health care provider form
- Health coaching call
- Onsite biometric screening



Health Assessment



Well-Being Activity



Note: At-home test kit approved for 2020 will likely continue for 2021.

Health-Plan Offered Wellness Incentives

- Effective January 1, 2021, UnitedHealthcare is the only health plan that may offer financial wellness incentives to members
 - Members enrolled in Medicare Advantage through UnitedHealthcare are not eligible for the \$150 wellness incentive
- All other members (i.e. non-Medicare Advantage) are encouraged to participate in Well Wisconsin and earn the \$150 wellness incentive

Silver Sneakers



Silver Sneakers will still be available to members enrolled in:

- Medicare Advantage with UnitedHealthcare
- Medicare Plus with WEA Trust

Coming Soon – WebMD Integration

- StayWell recently merged with WebMD Health Services
 - Will provide an improved and customized wellness experience
- New tools and resources from WebMD launching in 2021 – including a new web portal experience
 - Each user will need to set up a new web portal account
- More details to come



Q&A Session

- Please type questions into the chat box
- Questions should be general
- No PII/PHI permitted

Coaching Calls

- I work with a health coach that isn't provided through StayWell or the Well Wisconsin program. Does a coaching call with an independent health coach count as an eligible health check toward earning the \$150 wellness incentive?

New Employee

- I am a new employee that will have health insurance effective October 1, 2020. Can I still earn the 2020 wellness incentive or is it too late?

Q&A Session – Time to Wrap Up



We have time for one last question...

Resources

- Well Wisconsin Program 2021 Video
- Virtual Benefit Fair Alternatives
- Member Resources
- Further Questions



Well Wisconsin Program 2021 Video

- Want to learn more?
Watch this short [informational video](#) from StayWell about the 2021 Well Wisconsin Program



2021 Virtual Benefit Forums



ETF Benefits for Members

- Throughout open enrollment
- 20 total sessions
 - Health Insurance & Pharmacy Benefits for Active Members
 - Health Insurance & Pharmacy for Retirees
 - Dental & Vision Coverage
 - Wellness Program
 - Supplemental Programs
 - Pre-Tax Savings Accounts, Accident Program, Life Insurance



Benefit Vendors for Members

- Throughout open enrollment
- 30 total sessions
 - 2 sessions per vendor



- Registration required via ETF website
- No PII/PHI permitted
- See [ETF website](#) for session details

Member Resources

- ETF website
 - New Health landing page – etf.wi.gov/health
- Important Changes for 2021
 - [State employees](#)
 - [Local employees](#) – same for all Local Program Options
 - See meeting materials for PDF versions
- [Health Plan and Vendor contact information](#)
- [2021 Decision Guides](#)

Further Questions



If you have additional questions following today's session, you can contact:

- StayWell at 1-800-821-6591 or wellwisconsin@staywell.com, or
- An ETF benefits specialist at 1-877-533-5020
7:00 a.m. to 5:00 p.m. (CDT) / Monday – Friday

Evaluation Survey



You will receive an evaluation survey following this session – please take a few minutes to complete the survey



Thank You!

