



# Vision Insurance

For All Members and Retirees



# Objectives

---

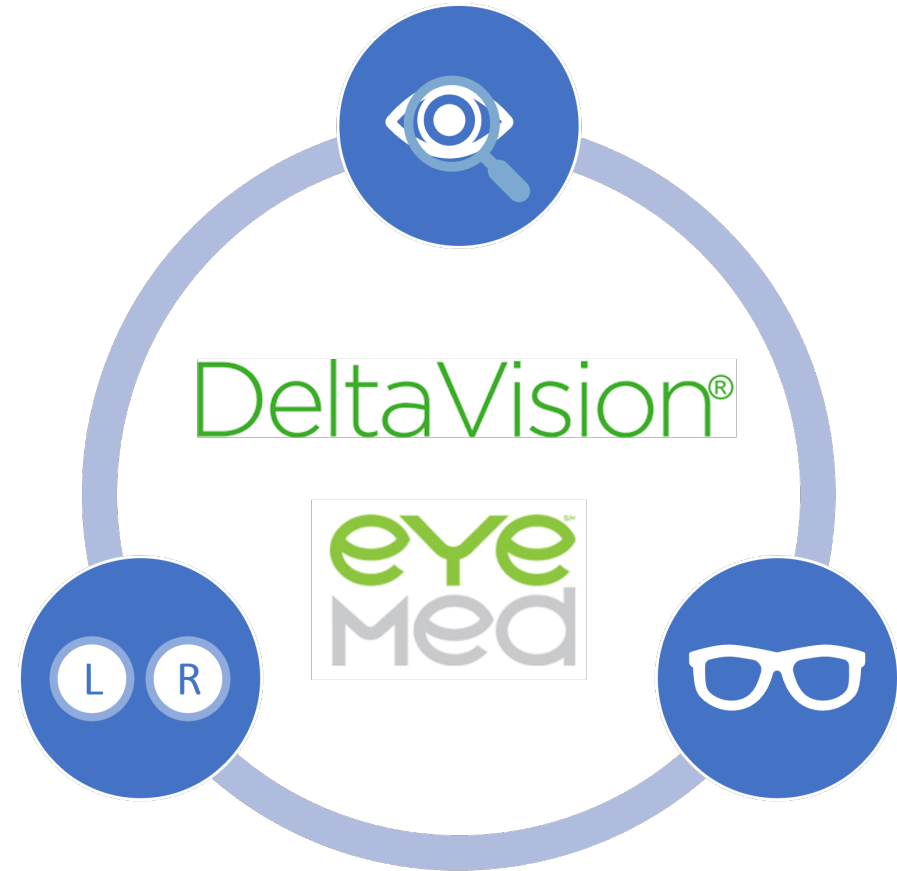
By the end of this presentation, you will be able to:

- Enroll in Vision Insurance, if eligible
- Change your Vision Insurance coverage
- Find vision providers
- Find member resources

# Vision Coverage

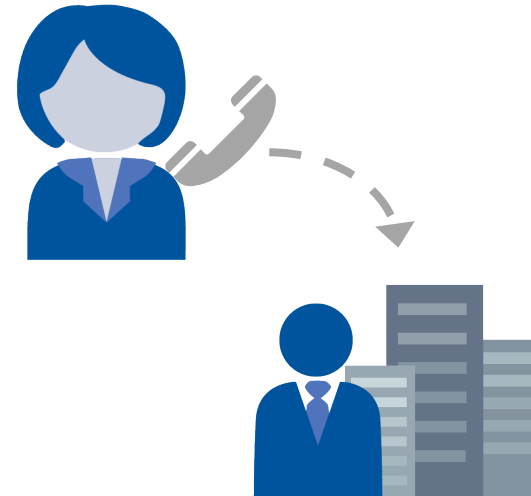
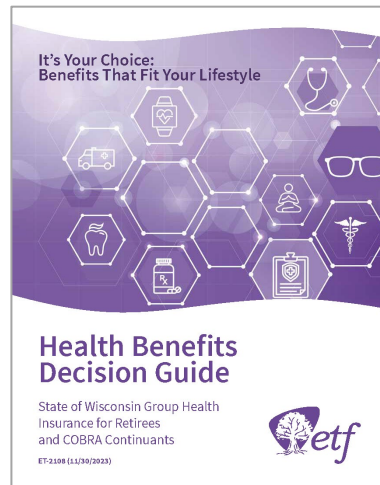
---

- Supplemental vision, administered by DeltaVision<sup>®</sup>, with EyeMed Vision Care
- Provides coverage for annual eye exams and allowances towards glasses or contact lenses
- See the [DeltaVision Overview](#) for complete coverage details



# State Employees and Retirees Vision Eligibility & Enrollment

---



All State employees and  
retirees are eligible

Speak with your employer  
about how to enroll

# Local Employees and Retirees Vision Eligibility & Enrollment

---

## Local Employees

- Speak with your employer
- [Local Employers with Supplemental Options](#)

## Local Retirees

- Eligible to enroll during open enrollment
- [Enroll or Make Changes to Dental, Vision, and Accident Plan](#) page for forms to complete

# Employees About to Retire (State & Local)

## Vision Eligibility & Enrollment

---

Active  
Employee

- Enrolled as an active employee at retirement

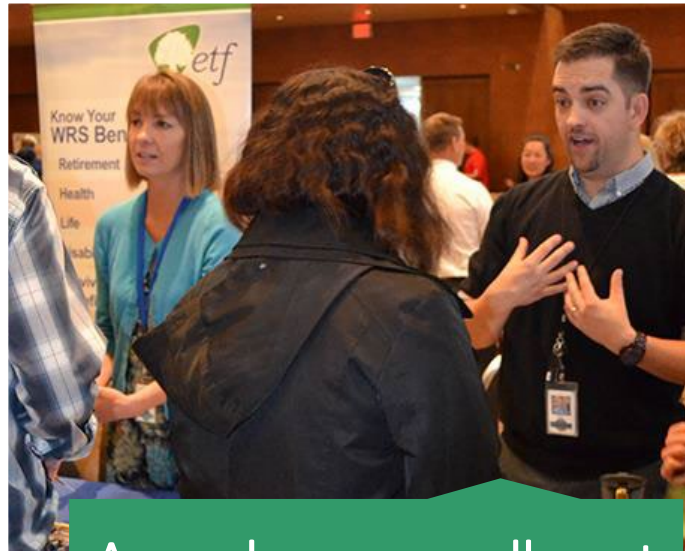
Within 60  
days

- [ETF Supplemental Vision Retiree/Continuant Change Form](#)
- [Enroll or Make Changes to Dental, Vision, and Accident Plan](#) page for forms to complete

# When to Enroll or Change Vision Coverage



Within 30 days of date of hire



Annual open enrollment period in the fall

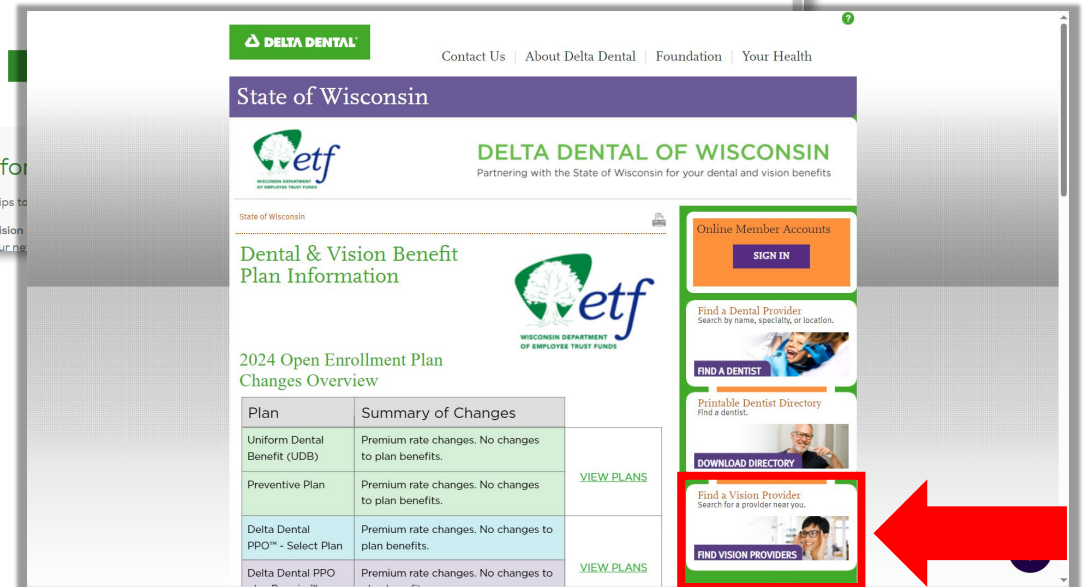
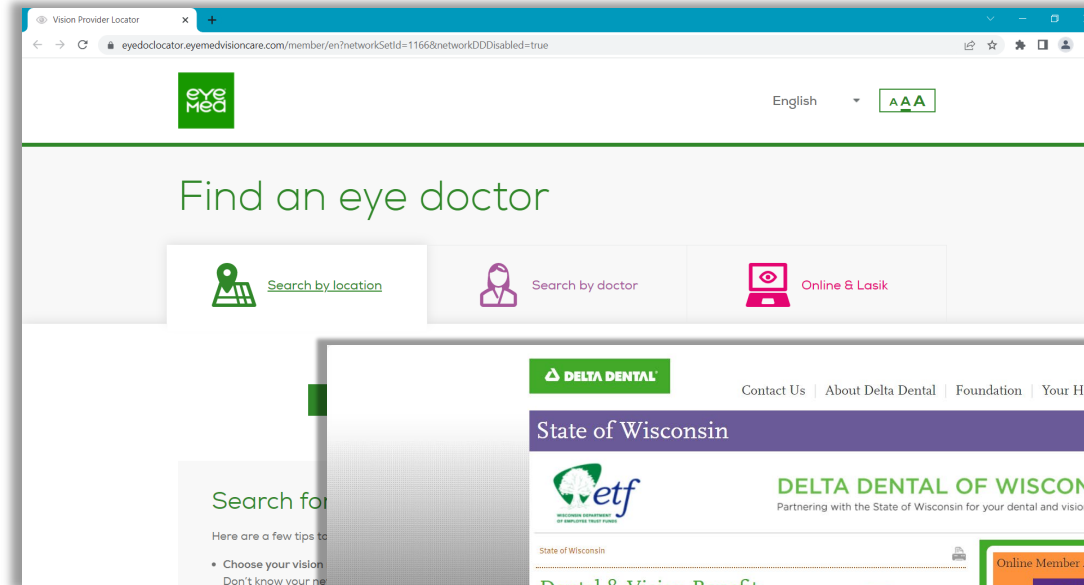


Qualifying life event

You cannot cancel your benefit election(s) mid-year without a qualifying life event. [Life Event Guide](#)

# Finding Vision Providers

- Make sure your eye doctor is covered
- Search for a provider at EyeMed: [Find an eye doctor](#)
- Or search link on: [Delta Dental website](#)





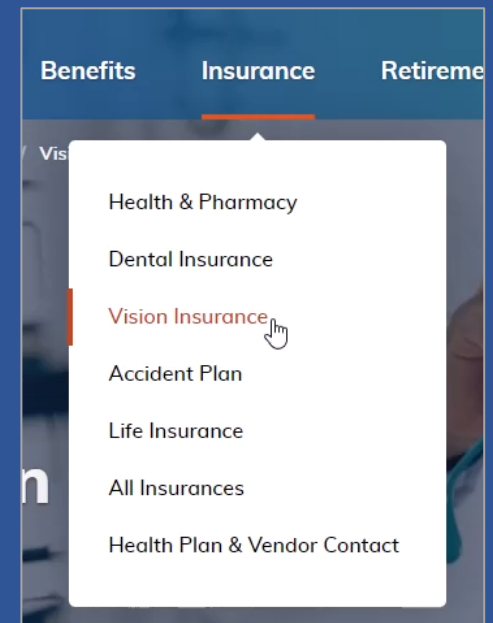


# Vision Insurance

Website Feedback

# Vision Insurance

- Find information about:
  - Plans available
  - Premiums and coverage
  - Enroll or make changes
- Go to: [etf.wi.gov](http://etf.wi.gov)





Vision Insurance



**Related Resources**

[Vision Insurance slides](#)

[Vision Insurance](#)

[Local Employers with Supplemental Options](#)

[DeltaVision Website](#)

[Find In-Network Vision Providers](#)

# Vision Insurance

For All Members and Retirees



Watch on YouTube





# Stay Connected

---



[etf.wi.gov](http://etf.wi.gov)



ETF E-mail Updates



1-877-533-5020

