

Your 2024 Vision Benefits



DeltaVision®

OVERVIEW



Introduction



2024 Vision
Benefits



Finding a Vision
Provider



Resources & How
to Enroll

Important

- If you are already enrolled in DeltaVision your coverage will automatically continue
- There are no benefit or rate changes for vision coverage in 2024
- If you enroll you will receive a new ID card in the mail after your effective date*. If you are already enrolled, you will not receive a new ID card.

DeltaVision[®]



WHY EVERYONE NEEDS EYE EXAMS

- Blurry vision
- Eye strain
- Headaches
- Protection
 - UV
 - Blue light
- Productivity
- Eye health
- General health



2024 Vision Plan Benefits

EXAMS

	Comprehensive Eye Exam	Contacts Fit and Follow-Up (std)	Contacts Fit and Follow-Up (prm)
In-Network	\$15	Up to \$40	10% off retail
Out-of-Network	\$45 reimbursement	\$0	\$0

FRAMES

	Frames
In-Network	\$150 allowance, then 20% off balance
Out-of-Network	\$70 reimbursement



- Choose any available frame
- One every two years for adults
- One every year for children

LENSES & LENS OPTIONS

	Lenses
In-Network	Member pays \$25 (plan pays the balance)
Out-of-Network	\$30/\$50/\$65 reimbursement

Lens options

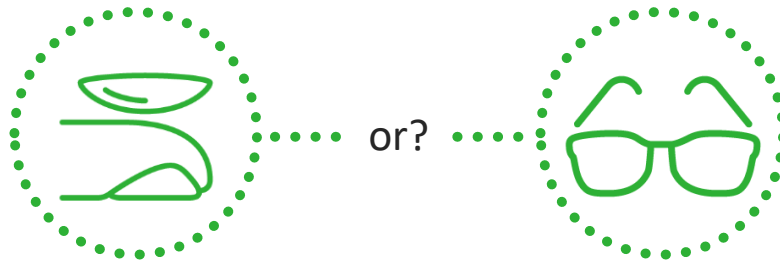
- UV coating (\$0 in-network)
- Tint: solid & gradient (\$15 in-network)
- Standard scratch resistance (\$0 in-network)
- Standard polycarbonate (\$0 child/\$35 adult in-network)
- Standard progressive (\$25 in-network)
- Standard anti-reflective coating (\$45 in-network)

CONTACT LENSES



	Conventional lenses	Disposable lenses	Medically necessary
In-Network	\$150 allowance, then 15% off balance	\$150 allowance	Paid in full
Out-of-Network	\$105	\$105	\$210 allowance

FRAME AND CONTACT LENS EXAMPLE



Ellen is a regular contact lens wearer, and usually uses her benefit towards a supply of contacts. However, she hasn't replaced her glasses in a few years, and she could use a new pair.

FRAME AND CONTACT LENS EXAMPLE



\$150 contact lens allowance

To maximize her benefits, Ellen first uses her \$150 contact lens allowance to purchase her annual supply of contacts.

FRAME AND CONTACT LENS EXAMPLE



\$150 frame
allowance

Even though she has used her contact lens allowance, Ellen still has a frame allowance of \$150 to use. So, she purchases a pair of Ray-Bans.

FRAME AND CONTACT LENS EXAMPLE



20% discount on
lenses

After using her contact lens allowance, Ellen no longer has her lens allowance. However, she does still receive a 20% discount on any lens purchases.

ADDITIONAL DISCOUNTS

Laser vision correction:

- 15% off retail or 5% off promotional price

Other discounts:

- 40% off additional complete eyeglass purchases
- 20% non-covered items

DIABETIC EYE CARE

This benefit includes:

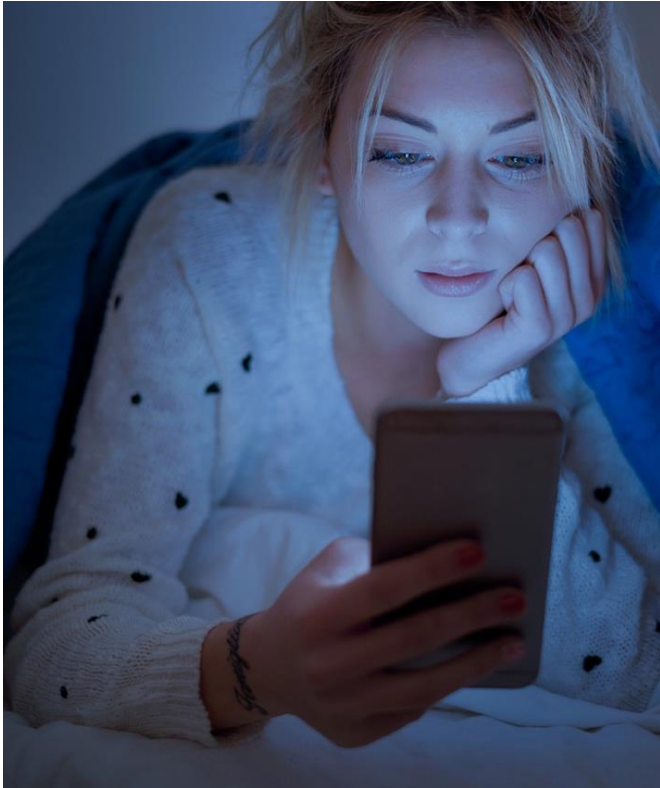


An office visit twice per year



Comprehensive diagnostic tests
twice per year

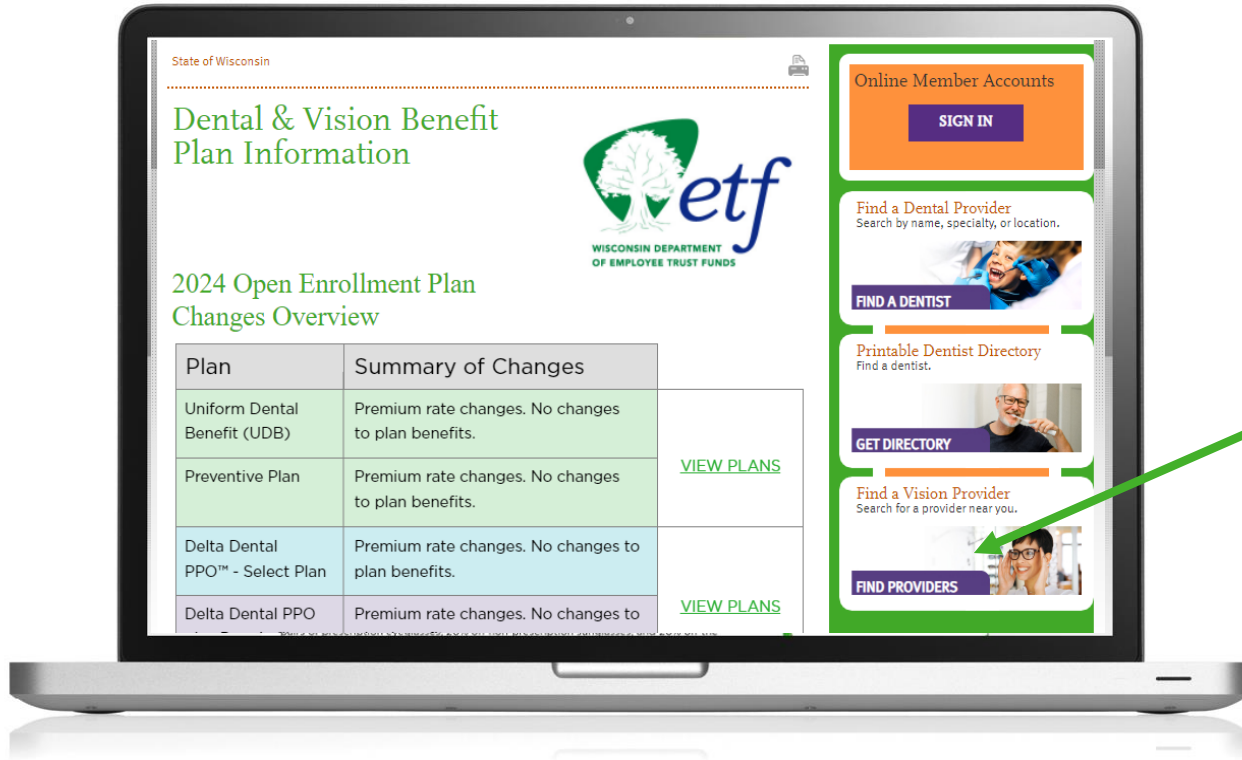
BLUE LIGHT FILTERING LENSES



- Covered benefit under "tint" and "anti-reflective coatings"
- Side effects of blue light include:
 - Eye strain, headaches, dry eyes
 - Interrupted sleep cycles = potential for sleep disorders
 - Lack of sleep leads the way for potential risk of heart issues, diabetes, or stroke

Finding a Vision Provider

FINDING A VISION PROVIDER



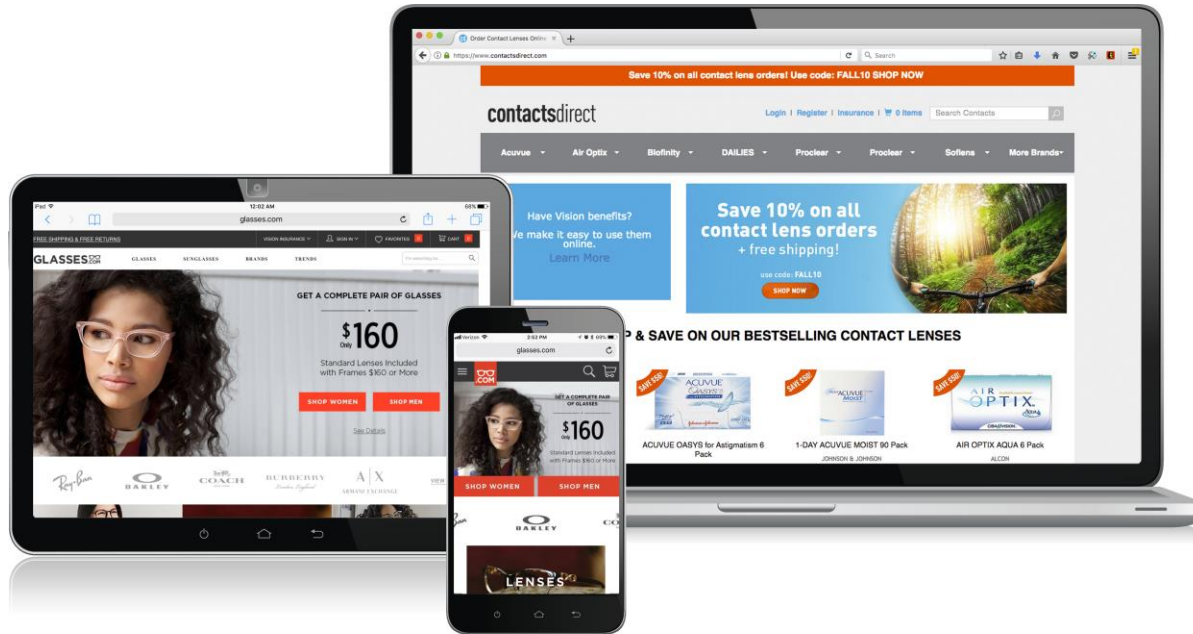
EYEMED RETAILERS



INSIGHT NETWORK



ONLINE EYEWEAR PROVIDERS



LENSCRAFTERS 





2024 VISION PLAN – RATES

DeltaVision Plan		
Monthly Premium	Active Employee	Retiree
Individual	\$5.72	\$5.72
Individual + Child(ren)	\$12.88	\$11.42
Individual + Spouse	\$11.42	\$11.42
Family	\$20.58	\$13.41

Resources & How to Enroll

- Award-winning customer service
- Longest live-agent hours in the industry: 102/week
- Access 7 days per week
- Language Line translation services for more than 150 languages



ONLINE TOOLS

Web

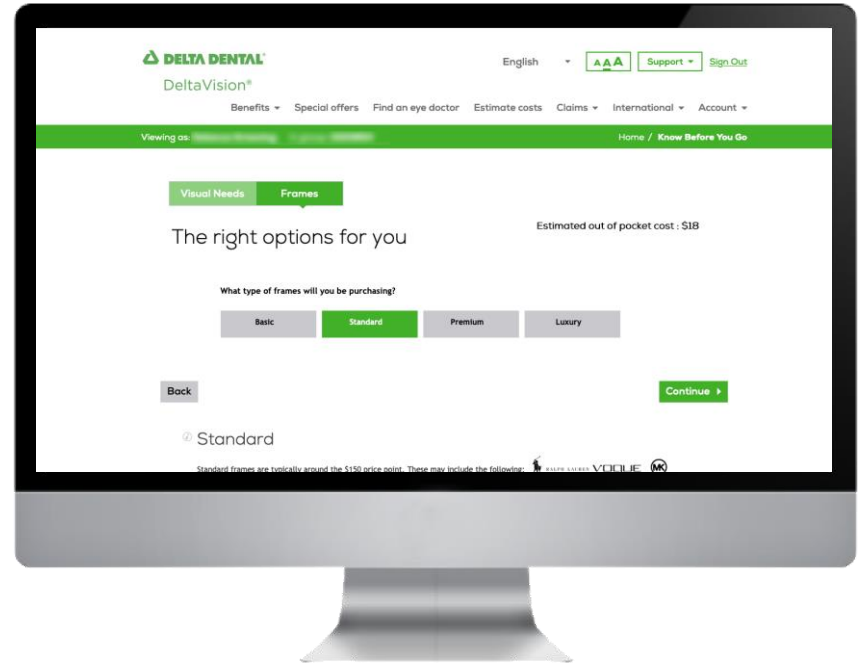
- View benefits and eligibility
- Download ID cards and EOBs
- Check claim status
- View wellness information
- Review LASIK information
- Contact EyeMed
- Find answers to common questions

www.deltadentalwi.com/state-of-wi-vision

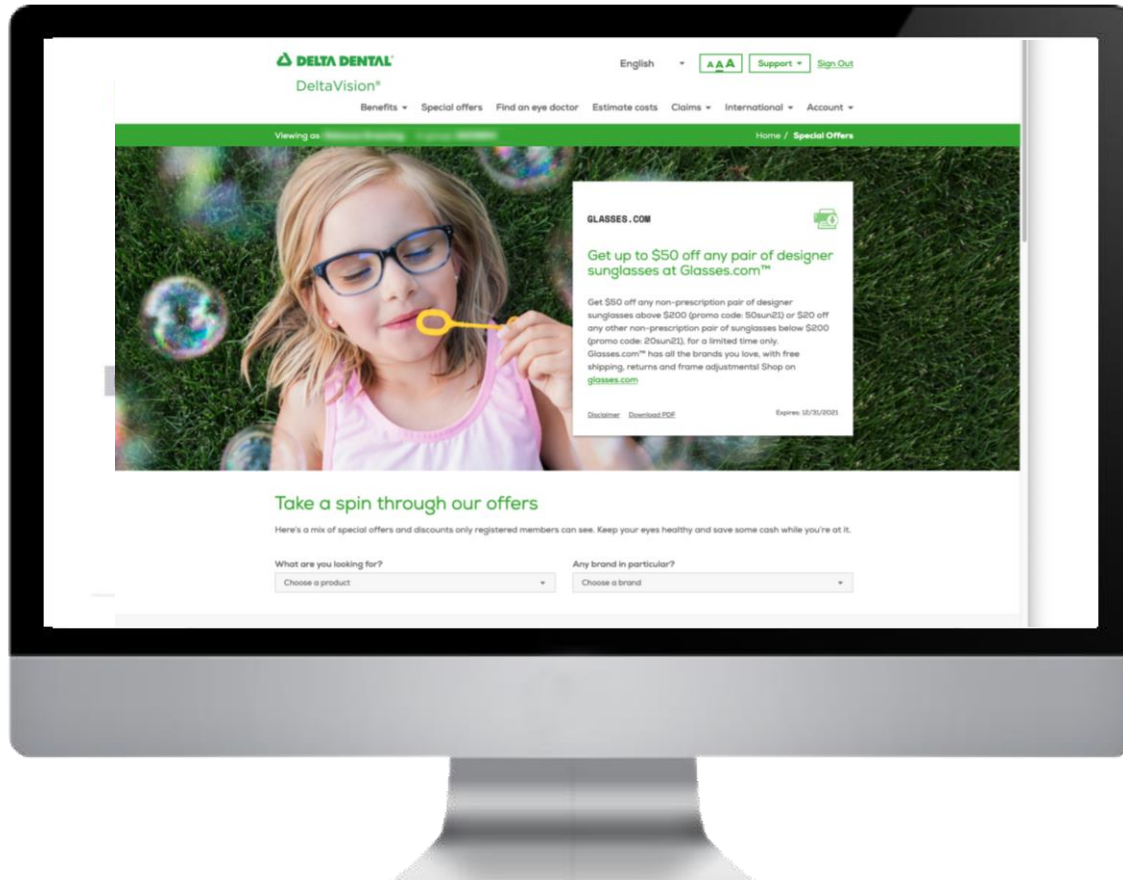
COST TRANSPARENCY TOOL

Estimate your costs upfront:

- Choose anticipated services and products
- Easy-to-understand explanations of differing types of frames, lenses, add-ons and contacts are included
- See plan-specific estimated out-of-pocket cost total (if any)



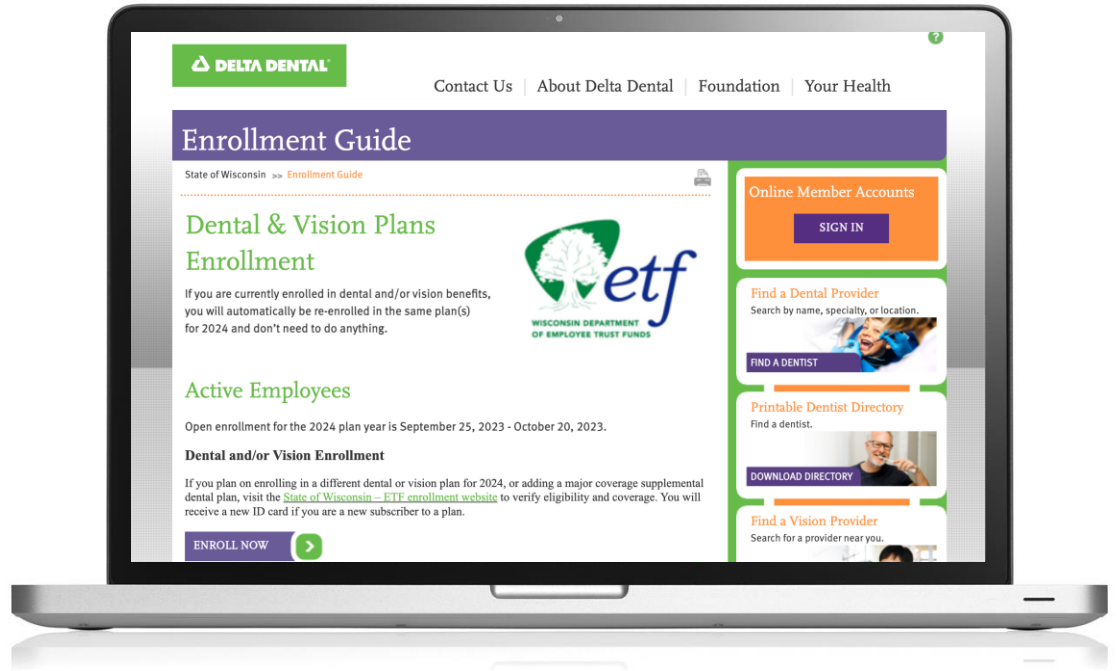
SPECIAL OFFERS



NEXT STEP: ENROLLMENT

- Review specific benefits and plan costs
- Enroll or make changes during open enrollment:
 - September 25 – October 20, 2023

ENROLL NOW >



Contact Us



If you have any questions, please contact a Benefit Advisor or visit our website.

855-544-6035

www.deltadentalwi.com/state-of-wi-vision



DeltaVision®

