



# My Insurance Benefits

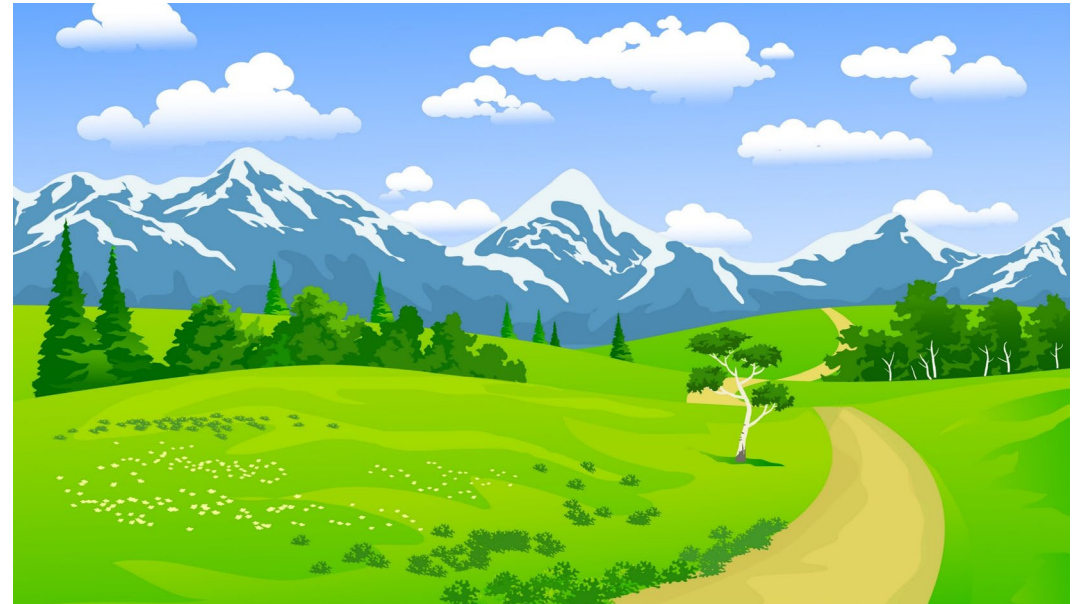
Transition Plan



# My Insurance Benefits Goes Live in Summer 2025!

---

Join ETF as we get started on our transition journey now.



# Here is What We'll be Covering Today...

---

Where we are going – *My Insurance Benefits!*

How to prepare

Directions to get there

Resources for the journey

# Why This Journey & Where We Are Going

---

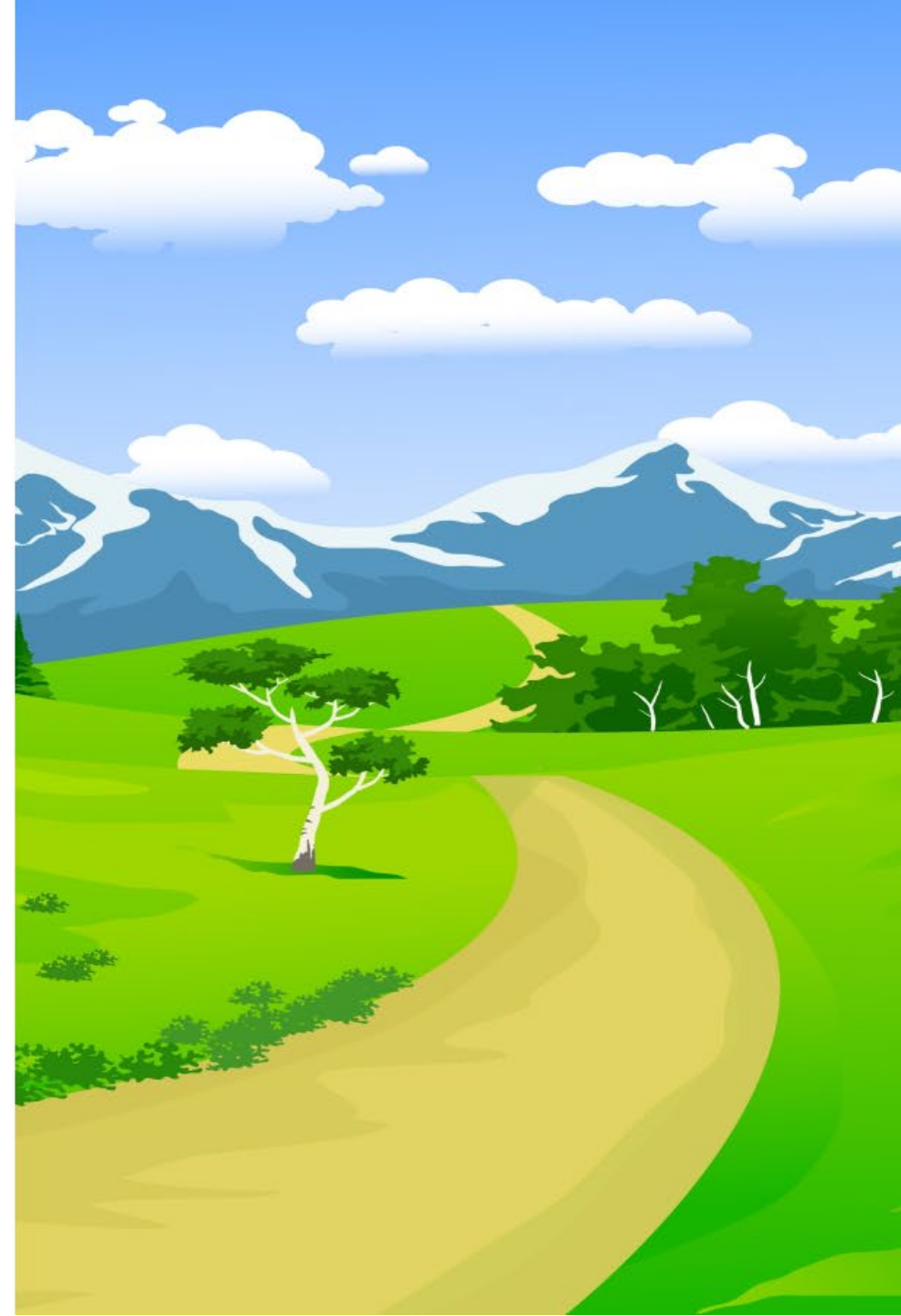




# Why This Journey

The goal of My Insurance Benefits is to deliver quality insurance benefits and services by providing a secure, one-stop, self-service platform for members and employers to access and manage their insurance benefits.

My Insurance Benefits will allow for visibility, anytime access, and more consistent customer experience across benefit options.



# Where We Are Going – *My Insurance Benefits*

---



Secure, easy-to-use platform



Members interact with their benefits online in the way they want



All members will use the same system for enrollments



24/7 access



myETF Benefits (MEBS) and Web Access Management System (WAMS) will be retired



Enrollment system for health, dental, vision, life, income continuation, accident, and pre-tax savings



System (Voya) will send COBRA notifications



Members can upload documentation to the system

# Where We Are Today

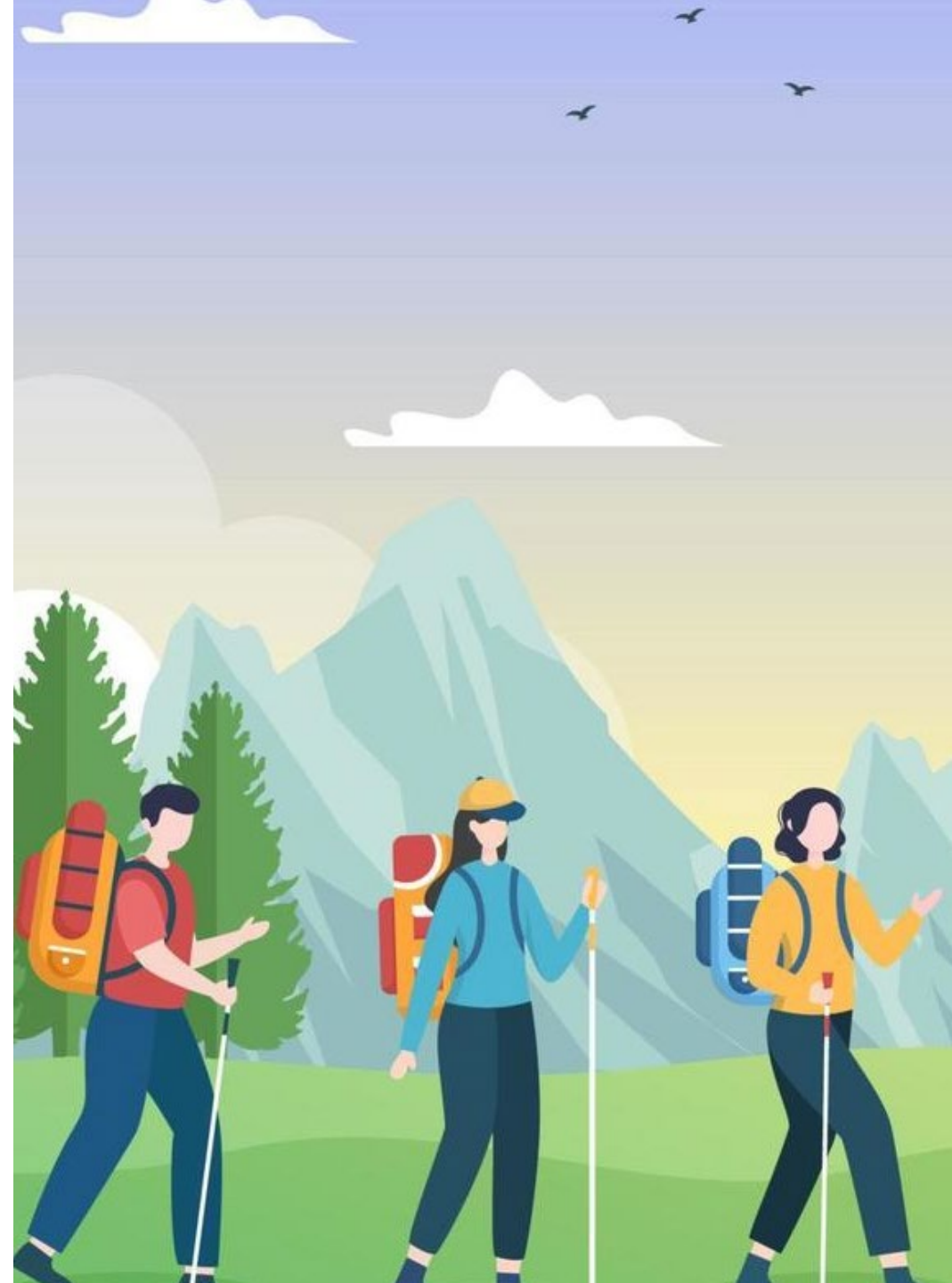
---

- My Insurance Benefits is a working enrollment system
- The Employer Transaction Application (ETA) is built
- Employer testing is near completion
- Documents can be uploaded to the system
- My Benefits Employer and Member portals are built
- User roles and personas have been tested
- Standard reports are available in My Insurance Benefits
- End-to-End testing begins in December

# Going Together

Select local and state employers are playing a large role in the development and testing of My Insurance Benefits.

From advising on application capabilities and feature improvements, to numerous hours of testing and review, employers have informed the development of My Insurance Benefits and continue to provide valuable guidance to ensure an easy-to-use, one-stop benefits experience is delivered.





# How to Prepare



# Ways to Prepare

---

- **Stay informed!** ETF will share important details and impacts via our regular communication channels
- **Disseminate information you receive** from ETF to your organization
- Save training dates when shared and **register to attend training**
- **Make updates** to communications and brochures that are owned by your organization to include new information that is shared
- Complete your **Employer Readiness Checklist** when received (Coming in Spring 2025)

# Training Details

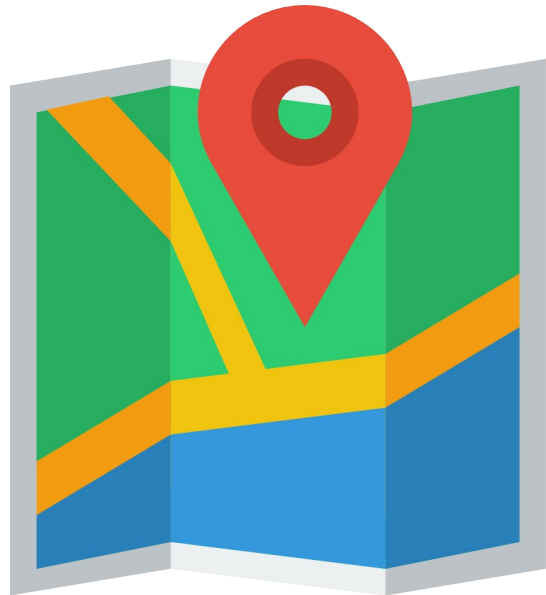
---

What will My Insurance Benefits training involve?

- Live training, videos, job aids, and skill checks
- Training on all systems and reporting capabilities you'll need, including My Insurance Benefits, Employer Transaction Application, Employer Payment Application, Certifi, and more.
- Training will continue through go live and beyond

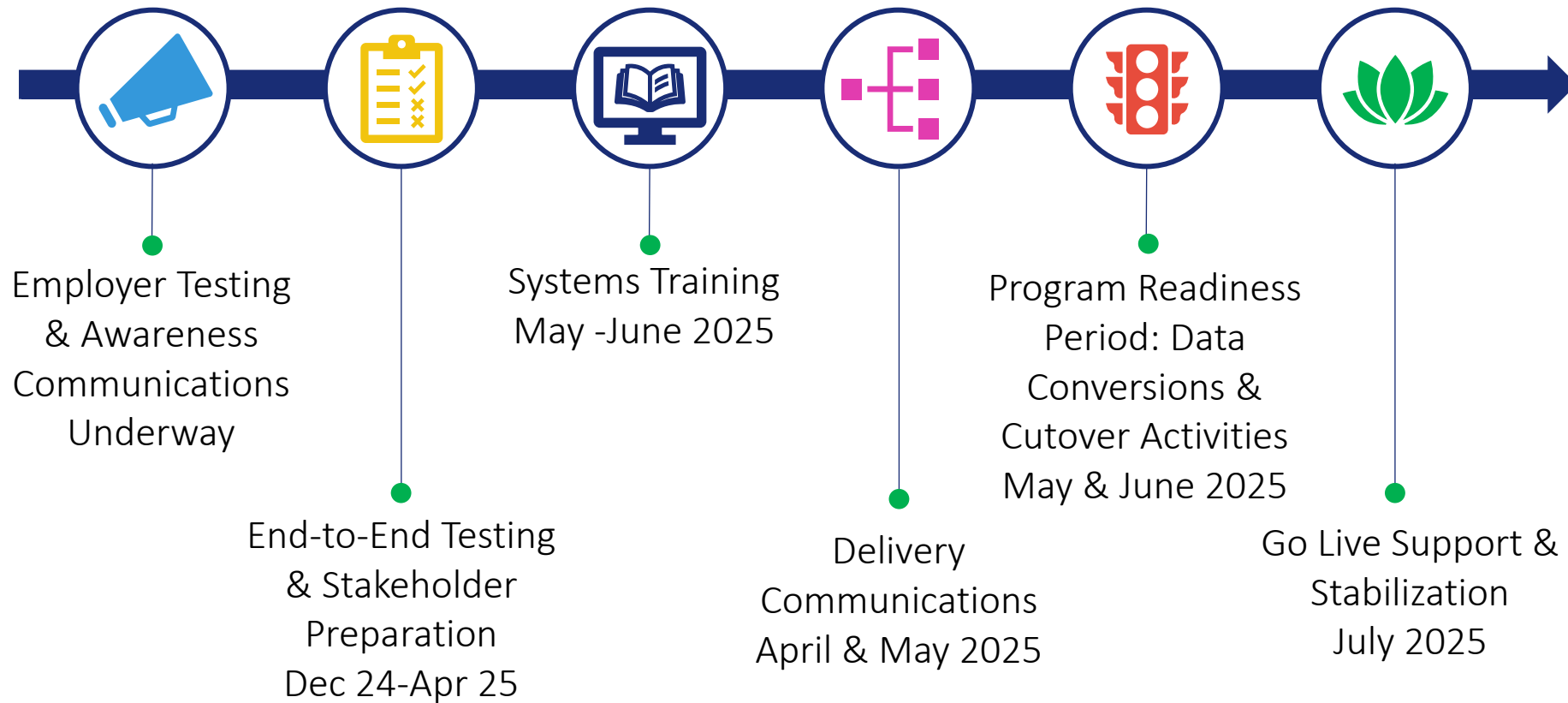
# Directions to Get There

---



# Implementation Landmarks

---





# Resources for the Journey

---



# Current and Future Resources

---

- Regular ETF communication channels and [My Benefits Employer News](#)
- ETF's [Insurance Administration System \(IAS\) for Local Employers](#) webpage
- Training materials and guides (Coming in Spring 2025)
- Employer Readiness Checklists (Coming in Spring 2025)
- Support Plan (Coming in Spring 2025)

# Connect with Us!

---

For additional support related to the implementation of My Insurance Benefits, please use the following:

## Local Employers

Contact ETF's employer liaisons at  
[ETFSMBIASEmployerSetupQuestions@etf.wi.gov](mailto:ETFSMBIASEmployerSetupQuestions@etf.wi.gov)

## State Employers

Contact the IAS Project Manager with whom you currently work.



# Thank You

---



ETF E-mail Updates



[etf.wi.gov](http://etf.wi.gov)



1-877-533-5020

