



## Welcome to the **Dean Difference**

**2023 Open Enrollment**  
**(September 26<sup>th</sup> – October 21<sup>st</sup>)**

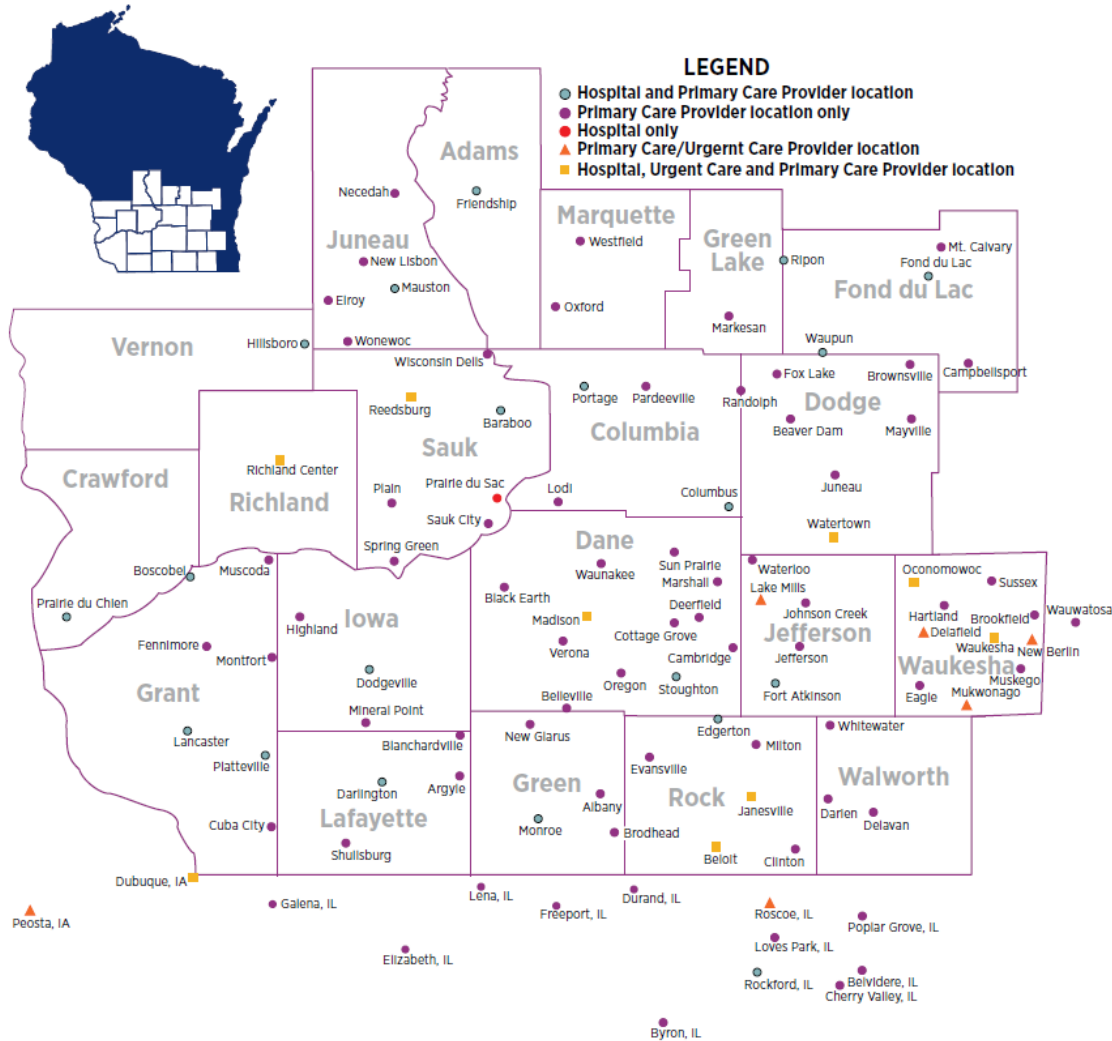


**2023 State of Wisconsin Group Health Insurance Program**



**CHOOSE THE RIGHT  
NETWORK FOR YOU**

# DEAN HEALTH PLAN – HMO NETWORK



## Major Health Systems

- SSM Health Hospitals & Clinics (Dean Medical Group, Fond du Lac Regional and Monroe Clinics)
- Prairie Ridge Health Hospital and Clinics
- ProHealth Care Hospitals and Clinics
- Fort HealthCare Hospital and Clinics
- Sauk Prairie Healthcare Hospital and Clinics

Find a provider or location

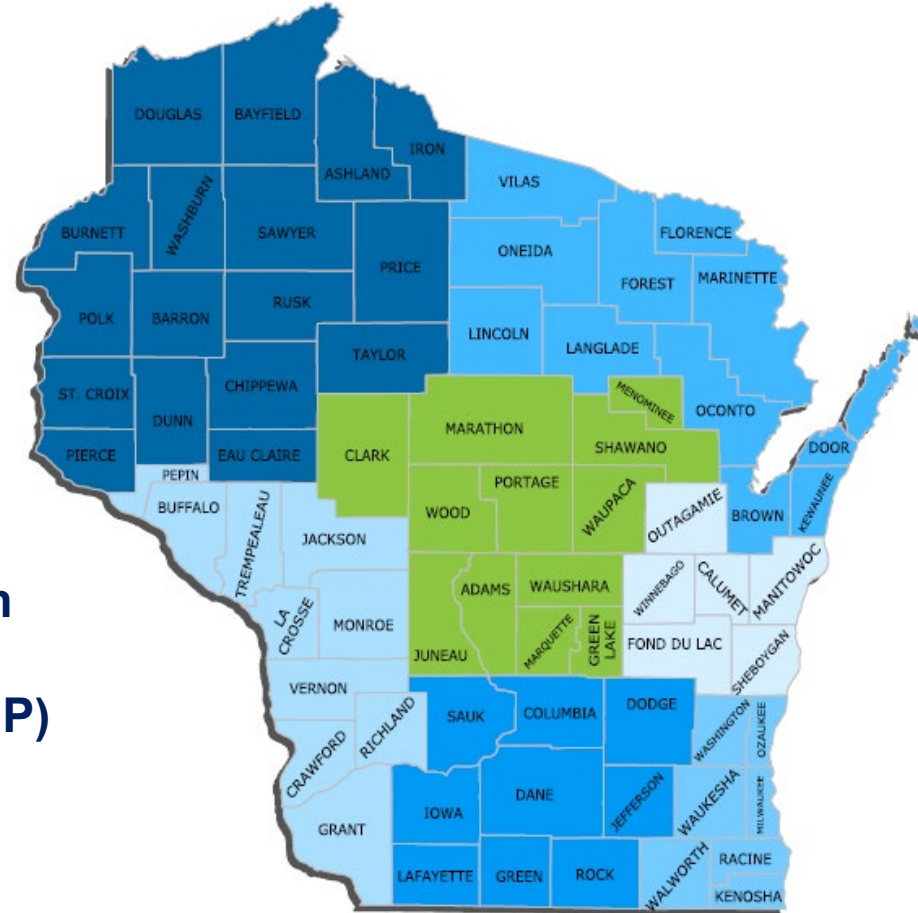
Visit [deancare.com/doctors](https://deancare.com/doctors) or [deancare.com/locations](https://deancare.com/locations)

# DEAN HEALTH PLAN - PPO NETWORK

## STATEWIDE

Providers ..... 56,541

Hospitals ..... 144



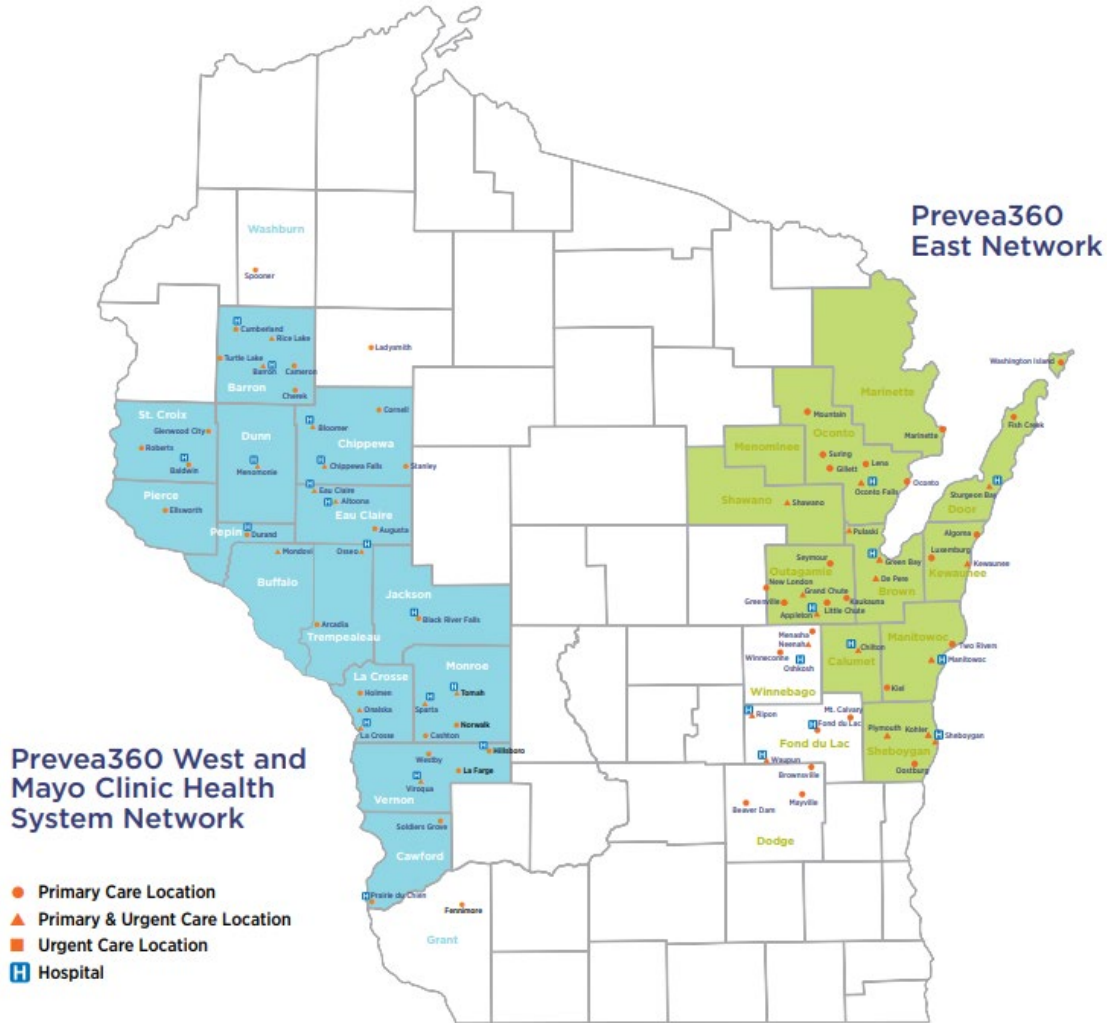
**Nationwide coverage  
featuring preferred  
providers within the First  
Health Network**

## NEW FOR 2023

- 1. Access Plan By Dean Health Plan**
- 2. State Maintenance Plan (SMP) By Dean Health Plan**
  - 1. Florence County (State Employees)**
  - 2. Florence, Marquette, Waupaca and Waushara Counties**

Visit [providerlocator.firsthealth.com/deanprimary](https://providerlocator.firsthealth.com/deanprimary)

# PREVEA360 – HMO NETWORKS



**ACTION REQUIRED - NEW FOR 2023.....**

We have optimized the structure of our Prevea360 provider network offering, adding a second comprehensive provider network option for State of WI Group Health Insurance Program members to select.

***Be sure to re-enroll for 2023 and select your network option when completing your enrollment elections to ensure access to your network of choice.***

**To view the most up-to-date providers and locations:**

1. Go to [prevea360.com/doctors](https://prevea360.com/doctors).
2. Select your health plan type in the drop-down menu.  
**For the Prevea360 East Network, select [State of WI Employee - Prevea360 East].**  
**For Prevea360 West, select [State of WI Employee - Prevea360 West and Mayo Clinic Health System].**
3. Search by name, specialty, gender, language and/or location.

Find a provider or location

Visit [prevea360.com/doctors](https://prevea360.com/doctors) or [prevea360.com/locations](https://prevea360.com/locations)

# PREVEA360 – HMO NETWORK OPTIONS

## Option 1 - Dean Health Plan – Prevea360 East

If a member prefers to get primary care in eastern Wisconsin, then they should select ***Dean Health Plan – Prevea360 East***.

Core Counties include Brown, Calumet, Door, Kewaunee, Manitowoc, Marinette, Menominee, Oconto, Outagamie, Shawano and Sheboygan counties.

### Major Health Systems

Prevea Health Clinics

HSHS WI Hospitals & Clinics

Door County Memorial Hospital & Medical Center

Holy Family Memorial Hospital and Clinics



# PREVEA360 – HMO NETWORK OPTIONS

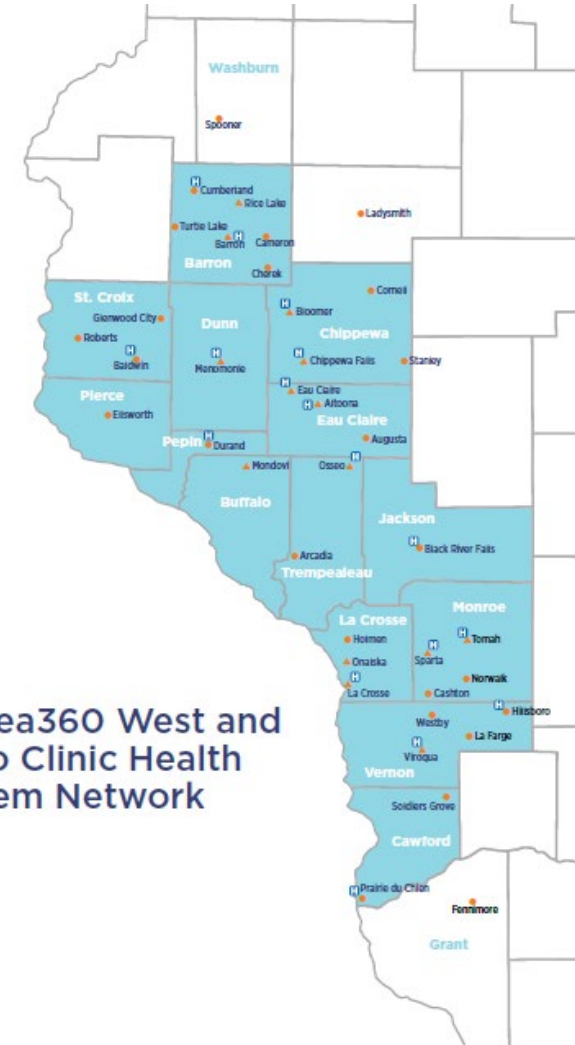
## Option 2 - Dean Health Plan – Prevea360 West and Mayo Clinic Health System

If a member prefers to get primary care in western Wisconsin, they should then select ***Dean Health Plan – Prevea360 West and Mayo Clinic Health System***.

**Core Counties include** Barron, Buffalo, Chippewa, Crawford, Dunn, Eau Claire, Jackson, La Crosse, Monroe, Pepin, Pierce, St. Croix, Trempealeau and Vernon counties.

### Major Health Systems

- Prevea Health Clinics
- SHS WI Hospitals & Clinics
- Mayo Clinic Health System
- Oakleaf Clinics
- Black River Memorial Hospital



A photograph of two women sitting on the grass in a park, stretching their legs. The woman on the left is wearing a black tank top and leggings, while the woman on the right is wearing a yellow tank top and denim shorts. They are both smiling and looking at each other. The background shows trees and a bench under a bright sky.

# INNOVATIVE BENEFITS

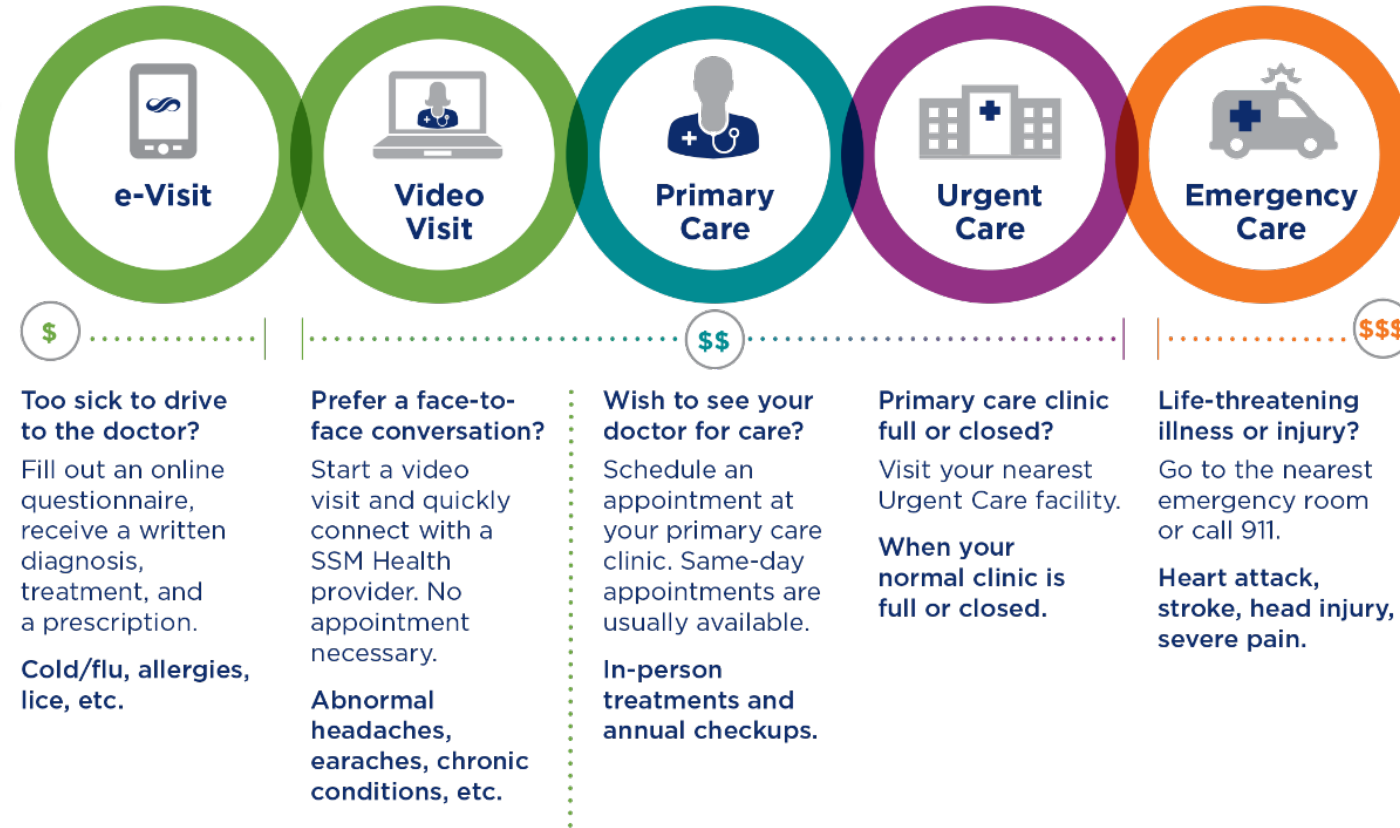


# RIGHT CARE AT THE RIGHT TIME

Knowing your care options before you need them saves you time and money.

## SSM Health Express Virtual Care

SSM Health Express Virtual Care offers two convenient and affordable options for patients to access non-emergency care via smart phone or computer without scheduling an appointment. These services are available to everyone, whether or not they are an established SSM Health patient.



# SSM HEALTH EXPRESS VIRTUAL CARE

## Convenient care meets affordability

- Low-cost care from the comfort of home with most plans

## E-Visit

- Fill out a digital questionnaire, receive a written diagnosis, prescription, and treatment plan
- Available during Urgent Care hours
- Get care for 30+ conditions including COVID-19 all from trusted SSM providers

## Video Visit

- Face-to-face visit
- No Appointment Necessary
- Available during clinic hours
- Same cost as office visit
- For High Deductible Health Plans, e-Visits and Video Visits cost is \$39



Visit [deancare.com/virtualcare](https://deancare.com/virtualcare)

# PREVEA VIRTUAL CARE

## Convenient care meets affordability

- Low-cost care from the comfort of home with most plans
- Fill out a digital questionnaire, receive a written diagnosis, prescription, and treatment plan
- Available during Urgent Care hours
- Get care for 30+ conditions including COVID-19 all from trusted SSM providers



Visit [prevea360.com/virtualcare](https://prevea360.com/virtualcare)



# WHY CHOOSE DEAN?

Proprietary and Confidential. Do Not Distribute.

 **DeanHealthPlan.**  
A member of SSM Health

# MEMBER ADVANTAGES

## Innovative Communication & Technology

- 24 Hour Nurse Advice Line
- Live virtual appointments with providers through telehealth services
- Member portal and MyChart

## Essential Health Care

- Complex Case Management
- Preventive, wellness and disease management services
- Behavioral Health and Substance Use Case Management
- Advance Care Planning
- Transplant Case Management
- Maternal and Child Health Outreach and Education

## First-Class Customer Service

- They are part of what makes the Dean Difference
- Focused on making member experience the priority
- Local – based in Wisconsin
- Our Customer Care Center are members too – they have asked the same questions

PREVEA  360  
health plan<sup>SM</sup>

## Care After Hours

Call **888-277-3832**



**Dean**HealthPlan

A member of SSM Health

## 24 Hour Nurse Advice Line

Call **800-576-8773**

# RESOURCES FOR STATE OF WI GHIP



## Coverage Details

Decision Guides  
Certificate of Coverage  
Schedule of Benefits  
Summary of Benefits and Coverage (SBCs)



## Providers and Information

Online Provider Search  
Printable Provider Directories (PDF)  
Service Area Maps



## Resources

FAQs & Resources  
Direct Links to Wisconsin  
Department of Employee Trust  
Funds Web Page  
Contact Us  
Open Enrollment Health Webinars

Visit [deancare.com/wi-employees](https://deancare.com/wi-employees)

Visit [prevea360.com/wi-employees](https://prevea360.com/wi-employees)

# STATE OF WISCONSIN GHIP WELLNESS

[Home](#) / [Members](#) / [State of Wisconsin Group Health Insurance Program](#) / State of Wisconsin wellness

## State of Wisconsin wellness



Through our partnership with WebMD, you can create a customized health experience to help you on your journey to achieve your best health, whatever that means to you. With thousands of resources at your fingertips, you can find the tools you need to be successful.

Your Dean Health Plan's wellness programs and Living Healthy, powered by WebMD, are independent of your WebMD programs through the State of Wisconsin Group Health Insurance Program. Separate user IDs and Passwords are required. Your Dean Health Plan Living Healthy account is available on our member portal at the 'Living Healthy' link after you log in.



### Wellness programs & features

- > [WELLNESS EVENTS](#)
- > [BEHAVIORAL HEALTH](#)
- > [WELLNESS VIDEO LIBRARY](#)
- > [REAL GOALS](#)
- > [NICOTINE CESSATION](#)
- > [CARE MANAGEMENT](#)
- > [PREVENTIVE HEALTH TOOLKITS](#)
- > [PODCAST LIBRARY](#)

Visit [prevea360.com/etfwellness](https://prevea360.com/etfwellness)  
or [deancare.com/etfwellness](https://deancare.com/etfwellness)

# THE DEAN DIFFERENCE



- **Robust coverage**
  - Whether you're in our largest network or our most focused network, you'll have the coverage you need
- **Exceptional care**
  - We only partner with health systems that share our core values and demonstrate them in practice
- **Great customer service**
  - Our customer care team is based locally here in Wisconsin
- **Benefits for the whole you**
  - 8 dimensions of wellness



# HAVE QUESTIONS?

## CALL

### By Phone

Contact our Customer Care Center for questions about your benefits and more.

**800-279-1301 (TTY: 711)**

Monday - Thursday,  
7:30 am - 5 pm

Friday, 8 am - 4:30 pm

## CLICK

### Enroll online

Support is just a click away.

Visit [deancare.com/contact](https://deancare.com/contact)

## VISIT

### In Person

Stop by our Insurance Desk, Monday - Friday, 8 am - 4:30 pm, at our office or one of the SSM Health Dean Medical Group locations listed here:

#### Madison

- **Health Plan Business Office:**  
1277 Deming Way
- **East:**  
1821 S. Stoughton Road
- **West:**  
752 N. High Point Road
- **South Madison Campus:**  
1211 Fish Hatchery Road

#### Janesville

- **Janesville East:**  
3200 E. Racine Street



# DeanHealthPlan

A member of SSM Health

# HAVE QUESTIONS?

---

CALL

---

## By Phone

Call our Customer Care Center for questions about your benefits and more. **877-230-7555 (TTY: 711)**  
Monday - Thursday, 7:30 am - 5 pm  
Friday, 8 am - 4:30 pm

CLICK

---

## Online

Visit [prevea360.com/contactus](https://prevea360.com/contactus) and select "Send a message to Prevea360"

PREVEA **360** health plan<sup>SM</sup>